



Flight Briefing Package

OAL0755 LGSM-LGAV

27 Sep 1325 UTC

OFP #3

SAMOS/ARISTARCHOS OF SAMOS
(GREECE)

-

ATHENS/ELEFThERIOS VENIZELOS
(GREECE)

PREPARED BY MICHAIL IONAS

OPS@OAV.GR

27 SEP 1716 UTC

OAL0755 LGSM-LGAV (27 Sep 1325 UTC)

RELEASE DETAILS SX-OAP LGSM-LGAV RELEASE # 4

FUEL PLANNING (KG)		LGSM - LGAV	
TRIP		1,687	00:38
CONT 5%		172	00:05
ALTN	LGSR	1,298	00:28
FINAL RESV		1,031	00:30
MIN T/O		4,188	01:41
TAXI		350	00:10
RELEASE	LGSM	4,538	01:51
REMAINING	LGAV	2,326	00:58

LOAD PLANNING (KG)		PLANNED	LIMIT
PAYLOAD		8,541	
FUEL		4,538	19,151
ZERO FUEL WEIGHT		49,784	62,500
RAMP WEIGHT		54,322	77,400
TAKE-OFF WEIGHT		53,972	77,000
LANDING WEIGHT	LIMIT	52,285	63,000
UNDERLOAD		10,715	LIM LDW

OAL0755 LGSM-LGAV (27 Sep 1325 UTC)

OLYMPIC AIR VIRTUAL FLIGHTPLAN - IFR OAL0755 SX-OAP LGSM-LGAV

ALL WEIGHTS IN KILOGRAMS (KG)

STD 27SEP/1325Z

PREPARED 27SEP/1716Z BY MICHAEL IONAS OPS@OAV.GR

COMMANDER: VASILIS CHATZISAVVAS / PARK LGSM: N/A / PARK LGAV: TBA
CONTACT DISPATCH CONTROL 131.950 15MIN BEFORE ARRIVAL (AVAILABLE 1730Z-2200Z)
IF NOT AVAILABLE CONTACT OC/DISPATCH - OAV TEAMSPEAK (AVAILABLE 24H)

OAL0755 OFP 4 SX-OAP/A320-214 CFM ROUTE: LGSMLGAV05
DEP: LGSM/SMI 09 ELEV 19 FT CRZ SPD: LRC TTL G/C DIST: 142 NM
ARR: LGAV/ATH 03R ELEV 308 FT INIT ALT: FL240 TTL F/P DIST: 186 NM
BURN ADJ: 103.0% TTL AIR DIST: 195 NM
AVG WIND CMP: HD013 KT
ALT: LGSR/JTR 34R ELEV 123 FT 139 NM

Table with columns: CONFIG, DOW, PAX, CARGO, TOTAL, ULOAD LIM, ZFW, TOW, LDW. Rows: STANDARD, MAX, PLN, ACT.

** TAKE-OFF DATA LGSM 09 **

COND: 53972 KG - RWY DRY @ +24°C Q1011 120/04 // LMT: FIELD
CONFIG: CONF 1+F - FLEX +67C
A/I OFF - A/C ON

SPEEDS: V1/127 - VR/127 - V2/129

ENG OUT: NONE

** LANDING DATA LGAV 03L **

COND: 52285 KG - RWY DRY @ +23°C Q1013 110/05 // LMT: STRUCT
CONFIG: CONF FULL
A/I OFF - A/C PACKS ON

SPEEDS: VREF/121 - VAPP/126

ENG OUT: AT 8.5 DME 'SAT' 109.6 RT TO ITCPT AND PRCD ON R 340 INBD 'KEA' 115.0
. AT 15 DME 'KEA' 115.0 ENTER HLDG (160 INBD,LT)

Table with columns: FUEL, CORR, ENDUR. Rows: TRIP, CONT 5%, ALTN LGSR, FINAL RESV, MIN T/O, EXTRA, TAXI, RELEASE. Includes CAPTAINS SIGNATURE and I ACCEPT THIS OFP AND I AM FAMILIAR WITH THE PLANNED ROUTE AND AERODROMES

FUEL TANK CAP 19151 KG / MAX EXTRA FUEL 10715 KG LIM BY LDW
TRIP CORR FOR 1000 KG TOW INCR: +17 KG / 1000 KG TOW DECR: -16 KG

OAL0755 LGSM-LGAV (27 Sep 1325 UTC)

2000 FT LOWER: +3 KG / EET 00:39 CLB: 250/300/78 DES: 78/300/250

LGSM/SMI	STD 13:25	ETD 18:15	ACT OFBL	EST T/O 18:25	ACT T/O
LGAV/ATH	STA 14:20	ETA 19:08	ACT ONBL	EST LDG 19:03	ACT LDG
			TTL BLCK		TTL FLT

ATC ROUTE: N0366F240 URNI2B URNIL G18 IKARO R32 RIPLI R19 VARIX VARI2C

ALTERNATE PLANNING

ALTN/RWY	DIST	ALT/FL	COMP	TIME	FUEL	DIFF	ROUTE
LGSR/34R	139	FL230	TL014	00:28	1298	-	SORE1T SOREVA10 MIL MIL1B
LGTS/28	206	FL240	HD017	00:42	1789	+491	NEVR1T NEVRA Z507 OSMOS

AWY	WAYPOINT NAME	MT	ALT TMP	WND/VEL FREQ	TAS GS	REM DIST	FUEL POSITION	REM / USED	LEG ETO / ATO	ACC
	LGSM/09		19					4.2 / 0.3		
	SAMOS/ARISTARCHO					186	N3741.4 E02655.7/.....		
URNI2B	R174J	174	*CLB			7	3.9 / 0.6	02 00:02		
						180	N3736.4 E02655.9/.....		
URNI2B	SAM	351	*CLB			5	3.8 / 0.7	01 00:03		
	SAMOS			111.60		175	N3741.2 E02654.4/.....		
URNI2B	URNIL	266	*CLB			18	3.5 / 1.1	03 00:06		
						157	N3741.1 E02632.7/.....		
G18	IKARO	315	*CLB			14	3.3 / 1.3	03 00:09		
						142	N3752.9 E02620.9/.....		
	*TOC	229	FL240 -24	304/032	366 355	3 139	3.3 / 1.3 N3750.2 E02617.9	00 00:09/.....		
R32	ERIMA	229	FL240 -24	305/032	366 355	9 131	3.2 / 1.3 N3745.9 E02608.1	01 00:10/.....		
R32	LETSO	229	FL240 -24	306/031	365 355	29 102	3.0 / 1.5 N3727.5 E02539.5	05 00:15/.....		
R32	RIPLI	229	FL240 -24	307/030	365 355	18 84	2.9 / 1.6 N3717.6 E02522.8	03 00:18/.....		
R19	VARIX	285	FL240 -24	308/030	365 336	17 67	2.8 / 1.7 N3722.8 E02502.1	03 00:21/.....		
VARI2C	*TOD	285	FL240 -24	308/030 115.00	364 335	12 55	2.7 / 1.8 N3726.7 E02448.6	02 00:23/.....		
VARI2C	KEA	285	*DES			25 31	2.7 / 1.8 N3733.4 E02418.9	04 00:27/.....		
				115.00						
VARI2C	LGAV/03R ATHENS/ELEFThERI	320	308			31	2.5 / 2.0 N3756.2 E02357.7	11 00:38/.....		

OAL0755 LGSM-LGAV (27 Sep 1325 UTC)

WIND INFORMATION - OBS 270600

(CLIMB) ERIMA LETSO RIPLI
FL230 304/031 -22 FL280 304/036 -34 FL280 305/034 -34 FL280 305/033 -34
FL190 302/024 -13 FL260 305/034 -29 FL260 306/033 -29 FL260 306/032 -29
FL140 306/016 -4 FL240 305/032 -24 FL240 306/031 -24 FL240 307/031 -24
9000 320/010 +6 FL220 305/029 -20 FL220 306/029 -19 FL220 307/029 -19
4000 329/007 +15 FL200 304/026 -15 FL200 306/026 -15 FL200 307/026 -15

VARIX (DESCENT)
FL280 307/033 -34 FL230 309/030 -21
FL260 307/032 -29 FL190 308/025 -12
FL240 308/031 -24 FL140 310/018 -3
FL220 308/029 -19 9000 318/011 +6
FL200 308/026 -15 4000 329/008 +15

END FLIGHTPLAN OAL0755 SX-OAP LGSM-LGAV 27SEP2013

OAL0755 LGSM-LGAV (27 Sep 1325 UTC)

(FPL-OAL0755-IS
-A320/M-DFGIRSWXE2E3M1Y/L
-LGSM1815
-N0366F240 URNIL G18 IKARO R32 RIPLI R19 VARIX
-LGAV0038 LGSR
-PBN/B1C1D101S2 NAV/RNVD2E5A2 DOF/130927 REG/SXOAP RVR/75 OPR/OLYMPIC AIR
VIRTUAL PER/C
-E/0141)

OAL0755 LGSM-LGAV (27 Sep 1325 UTC)

WEATHER BRIEFING - GENERATED 27 SEP 2013 17:16 UTC

LGSM LGAV LGSR LGTS

ORIGIN: LGSM/SMI (SAMOS/ARISTARCHOS OF SAMOS, GREECE)

LGSM 271650Z 12004KT 9999 FEW025 24/17 Q1011
LGSM 271400Z 2715/2724 VRB03KT 9999 SCT020
 BECMG 2715/2717 29010KT

DESTINATION: LGAV/ATH (ATHENS/ELEFATHERIOS VENIZELOS, GREECE)

LGAV 271650Z 11005KT CAVOK 23/16 Q1013 NOSIG RMK QNH 1013.1
LGAV 271100Z 2712/2812 07010KT 9999 FEW025
 BECMG 2716/2718 VRB03KT
 BECMG 2807/2809 12010KT

ALTERNATE: LGSR/JTR (SANTORINI, GREECE)

LGSR 271620Z 28010KT 9999 FEW025 25/17 Q1012 NOSIG
LGSR 271400Z 2715/2724 27012KT 9999 FEW020

ALTERNATE: LGTS/SKG (THESSALONIKI/MAKEDONIA, GREECE)

LGTS 271650Z 16006KT 9999 FEW025 25/10 Q1011 NOSIG RMK FEW180
LGTS 270500Z 2706/2806 32008KT 9999 FEW030
 BECMG 2712/2714 15012KT 9999 SCT040
 BECMG 2720/2722 VRB03KT 9999 FEW030
 BECMG 2804/2806 14004KT 7000 FEW010 SCT025

OAL0755 LGSM-LGAV (27 Sep 1325 UTC)

NOTAM BRIEFING - GENERATED 27 SEP 2013 17:16 UTC

LGSM LGAV LGSR LGTS

ORIGIN: LGSM/SMI (SAMOS/ARISTARCHOS OF SAMOS, GREECE)

B0777/13

LGSM/ARISTARCHOS PART OF RWY 09 EXTENDING FROM 300 METERS TO 600 METERS FROM THRESHOLD OF RWY, MAY BE SLIPPERY WHEN WET DUE TO RUBBER DEPOSITION ON RWY SURFACE. 08 SEP 10:59 2013 UNTIL 08 DEC 23:59 2013.
CREATED: 08 SEP 11:13 2013

B0718/13

LGSM/ARISTARCHOS AERODROME HOURS OF SERVICE AS FLW:
FROM 28/08/2013 TILL 26/10/2013

A.FROM 28/08 TILL 31/08
MON,TUE,WED,THU,FRI,SUN 0230-1730
SAT 0230-1840

B.FROM 01/09 TILL 30/09
MON,TUE,WED,THU,FRI 0300-1630
SAT 0300-1840
SUN 0300-1700

C.FROM 01/10 TILL 26/10
MON,TUE,WED,THU,FRI,SAT 0330-1600
SUN 0330-1800

NOTES:

- 1.-ON 08/09 SUN 0300-1730
- 2.-ON 22/09,29/09 SUN 0300-1800
- 3.-ON 28/9 SAT 0300-1800
- 4.-ON 05/10 SAT 0330-1800. 28 AUG 10:59 2013 UNTIL 26 OCT 20:59 2013.
CREATED: 28 AUG 11:03 2013

B0571/13

LGSM/ARISTARCHOS:NORTH PART OF AVASIS LIGHTS RWY 27 UNSERVICEABLE. 30 JUN 06:53 2013 UNTIL 30 SEP 23:59 2013. CREATED: 30 JUN 06:56 2013

B0569/13

RTILS RWY27 OUT OF SERVICE. 30 JUN 06:47 2013 UNTIL 30 SEP 23:59 2013. CREATED: 30 JUN 06:49 2013

B0500/13

SAMOS TRAINING FLIGHTS ARE NOT ACCEPTED WITHIN SAMOS TMA UNLESS PRIOR PERMISSION IS OBTAINED BY SAMOS ATC (CONTACT TEL 0030 2273087804). 07 JUN 08:49 2013 UNTIL 31 OCT 23:59 2013. CREATED: 07 JUN 08:53 2013

B0249/13

CAUTION ADVISED DURING TAKEOFF, LANDING AND TAXIING DUE TO POSSIBLE ENTRANCE OF WILD ANIMALS ON THE RWYS AND TWYS, ESPECIALLY DURING SUNRISE AND SUNSET. 31 MAR 11:03 2013 UNTIL 31 OCT 23:59 2013. CREATED: 31 MAR 11:17 2013

DESTINATION: LGAV/ATH (ATHENS/ELEFATHERIOS VENIZELOS, GREECE)

OAL0755 LGSM-LGAV (27 Sep 1325 UTC)

A1641/13

KEA VOR 'KEA' 115.00MHZ ON TEST DO NOT USE. KEA DME CH97X (ID:KEA)
NORMALLY OPERATING. 23 SEP 09:27 2013 UNTIL 30 SEP 11:30 2013. CREATED: 23 SEP
09:30 2013

A1640/13

CONCENTRATION OF BIRDS INCLUDING
FALCONS,BUZZARDS,STARLINGS,SWALLOWS AND OTHER SMALL PASSERINES IN
THE VICINITY OF THE AIRPORT.
CAUTION ADVISED. 01 OCT 00:01 2013 UNTIL 30 NOV 23:59 2013. CREATED: 23 SEP
08:32 2013

A1307/13

REF AIP GREECE AIRAC AMDT 8-13(WEF 22 AUG 2013) AD2-LGAV-4,
SECTION 2.12,COL 5 LINE 4,
AMEND TO READ RWY21R END COORDINATES AS FOLLOWS:
375517,46N0235507,99E. 22 AUG 00:01 2013 UNTIL PERM. CREATED: 31 JUL 08:47 2013

A1287/13

CONCENTRATION OF BIRDS INCLUDING FALCONS,DOVES,STORKS,
SWALLOWS AND SWIFTS IN THE VICINITY OF THE AIRPORT.
CAUTION ADVISED. 01 AUG 00:00 2013 UNTIL 30 SEP 23:59 2013. CREATED: 29 JUL
09:35 2013

A1243/13

ALL GENERAL AVIATION FLIGHTS WITH MTOW MORE THAN 5700 KG SHALL
SEND A SCHEDULE MOVEMENT ADVICE (SMA) MESSAGE TO THE AIRPORT
SCHEDULE FACILITATOR IN A TURNAROUND FORMAT ACCORDING TO IATA
STANDARD SCHEDULE INFORMATION MANUAL CHAPTER 6.10.
SMA SHALL BE SENT DURING WORKING HOURS 0830-1600 LOCAL TIME VIA
SITA FAX OR E-MAIL WITH COPIES TO SCHEDULING AND PLANNING DEPT AND
TO AIRPORT SERVICES OPERATION CENTER (ASOC).
CANCELLATION MESSAGES SHALL BE SENT AS SOON AS FLIGHTS WILL NOT
OPERATE.
ABOVE PROCEDURE DOES NOT APPLY TO HELICOPTERS VIP MEDICAL AND SAR
FLIGHTS.
FOR GENERAL AVIATION FLIGHTS WITH MTOW LESS THAN 5700 KG AIP GREECE
AD2 2.20.1.2 APPLIES.
CONTACT DETAILS :
SCHEDULE FACILITATOR SITA:ATHHAXH,
TEL:21035361189/190/811/813/815/816, FAX:2103537418
E-MAIL : ESAGOS-HSCA(AT)ATHENSAIRPORT.GR
LGAV ASOC SITA: ATHIAXH, TEL: 2103540000, FAX: 2103540095
E-MAIL: ASOC-SENIOR-SRV(AT)AIA.GR
LGAV SCHEDULING AND PLANNING DEPT SITA: ATHSCXH, TEL: 2103531425,
FAX: 2103532254, E-MAIL: SCHED-PLANNING (AT) AIA.GR. 23 JUL 09:36 2013 UNTIL
30 SEP 23:59 2013. CREATED: 23 JUL 09:39 2013

A1190/13

OBSTACLE LIGHTS ON BOYATI ATHINAI ERT RADIO MAST OUT OF SERVICE.
OBST COORDINATES (NOT IN WGS 84) 380904N0235138E. REF AIP-GREECE ENR
5.4-2. AND ENR 1.1.7.6. 14 JUL 12:00 2013 UNTIL 31 DEC 23:59 2013. CREATED:
14 JUL 11:37 2013

A1020/13

REF. AIP GREECE AD2-LGAV-9 PARAGR 2.20.2.1-J 20 SEP 2012
ADD B 747-800 TO EXISTING A/C TYPES. 14 JUN 05:27 2013 UNTIL PERM. CREATED:
14 JUN 05:33 2013

A1018/13

REF AIP GREECE AD-2-LGAV-STAR-3 28 JUN 2012, IN THE HOLDING

OAL0755 LGSM-LGAV (27 Sep 1325 UTC)

PATTERN AT KRO VOR/DME, ON THE SEGMENT NEVRA-KRO VOR/DME, ON THE SEGMENT KEPIR-KRO VOR/DME AND ON THE SEGMENT VARIX-KRO VOR/DME, AMEND TO READ 7000FT INSTEAD OF 6000FT. 14 JUN 05:21 2013 UNTIL PERM. CREATED: 14 JUN 05:25 2013

A1016/13

REF AIP GREECE, THE PROCEDURES DESCRIBED IN THE FOLLOWING PAGES ARE SUSPENDED.

1. AD2-LGAV-SID-2 28 JUN 2012
2. AD2-LGAV-SID-7 28 JUN 2012
3. AD2-LGAV-SID-10 28 JUN 2012
4. AD2-LGAV-SID-12 28 JUN 2012
5. AD2-LGAV-STAR-2 28 JUN 2012. 14 JUN 05:08 2013 UNTIL PERM. CREATED: 14 JUN 05:17 2013

A0997/13

LGAV/EL VENIZELOS/INTL:AT AREA BEYOND 10NM AND ALTITUDE BELOW 4000FT FOR ANGLES GREATER THAN 18 DEGREES FROM THE LOCALIZER CENTER LINE THE ILS RWY 03R (I-ATR) IS OUT OF USE DUE TO FALSE CAPTURE. 12 JUN 07:59 2013 UNTIL PERM. CREATED: 12 JUN 08:45 2013

A0893/13

REFERENCE AIP GREECE AD2-LGAV-SID-1 28JUN 2012 ON THE DESCRIPTIONS OF SIDS RWY 03R:

- 1)AT THE END OF EACH DESCRIPTION OF THE SIDS NEVRA1J,KEPIR1J,VARIX1J,KEA1J,GENDO1J,SOREV2J,VELOP2J,ASTOV2J,NEMES3J,RILIN2J,PIKAD2J,RIMAX1J,ABLON2J, DELETE:SEE NOTE 1.
- 2)AT THE END OF THE DESCRIPTION OF BIBEX1J, HAND AMEND TO READ:SEE NOTE, INSTEAD OF:SEE NOTE 1 AND 2.
- 3)AT THE END OF DESCRIPTIONS OF SIDS RWY 03R:
 - A. DELETE NOTE 1:DO NOT CLIMB ABOVE 4000FT(QNH)UNTIL REACHING 14DME/KRO,UNLESS CLEARED BY ATC.
 - B. HAND AMEND TO READ NOTE:THIS SID SHOULD BE USED FOR DESTINATION PAROS AIRPORT(LGPA),INSTEAD OF:NOTE 2:THIS SID SHOULD BE USED FOR DESTINATION PAROS AIRPORT(LGPA).
- 4.AT EACH DESCRIPTIOPN OF THE SIDS KEA1J, BIBEX1J,GENDO1J,SOREV2J,VELOP2J,ASTOV2J,NEMES3J,RILIN2J,PIKAD2J, RIMAX1J,ABLON2J, HAND AMEND TO READ:CLIMB ON RADIAL 048 SAT TO 1100FT(QNH).AT 1100FT(QNH)TURN RIGHT,INTERCEPT AND FOLLOW RADIAL 266 KRO TO RADIAL 266 KRO/14DME FIX NOT ABOVE 4000FT(QNH) UNLESS OTHERWISE INSTRUCTED BY ATC,INSTEAD OF: CLIMB ON RADIAL 048 SAT TO1100FT(QNH).AT 1100FT(QNH) TURN RIGHT, INTERCEPT AND FOLLOW RADIAL 266 KRO CLIMBING TO 4000FT(QNH).MAINTAIN 4000FT(QNH) UNTIL PASSING 14DME KRO. 27 MAY 09:48 2013 UNTIL PERM. CREATED: 27 MAY 09:53 2013

A0716/13

REFERENCE AIP GREECE AD2-LGAV:

- 1)ON AD2-LGAV-SID-1 CANCEL THE SID NEMES 3J 2)ON AD2-LGAV-SID-4 CANCEL THE SID'S NEMES 1T AND GERMI 1T 3)ON THE AD2-LGAV-SID-5 CANCEL THE SID NEMES 3L 4)ON THE AD2-LGAV-SID-9 CANCEL THE SID NEMES 3G
- 5)ON THE AD2-LGAV-SID-11 CANCEL THE SID NEMES 3F. 29 APR 07:33 2013 UNTIL PERM. CREATED: 29 APR 07:35 2013

A0518/13

REF AIP GREECE PART 3 AD2-LGAV-2.21.1.3 RUNWAY USE SYSTEM
ADDITIONAL HOURS OF LGAV - NOISE ABATMENT PROCEDURES AS FOLLOW :
31 MAR TILL 27 OCT 2013 DAILY 12:00-15:00. 31 MAR 02:00 2013 UNTIL 27 OCT 02:00 2013. CREATED: 29 MAR 04:55 2013

A0103/12

OAL0755 LGSM-LGAV (27 Sep 1325 UTC)

ELEFThERIOS VENIZELOS AIRPORT HAS BEEN APPROVED BY HCAA TO BE USED BY B747-800 AIRCRAFT AS ALTERNATE OR FOR A LIMITED NUMBER OF FLIGHTS. THE EXISTING ILS PROCEDURES HAVE BEEN DESIGNED TAKING INTO CONSIDERATION THE COLLISION RISK MODEL. 24 JAN 08:19 2012 UNTIL PERM. CREATED: 24 JAN 08:40 2012

ALTERNATE: LGSR/JTR (SANTORINI, GREECE)

B0628/13
RTIL RWY 16L U/S. 21 JUL 15:29 2013 UNTIL 31 DEC 23:59 2013. CREATED: 21 JUL 15:30 2013

B0599/13
RVR U/S. 05 JUL 08:21 2013 UNTIL 31 DEC 22:00 2013. CREATED: 05 JUL 08:23 2013

B0508/13
BIRD CONCENTRATION (SEAGULLS) IN MOVEMENT AREA. CAUTION ADVISED. 10 JUN 11:22 2013 UNTIL 31 OCT 23:59 2013. CREATED: 10 JUN 11:24 2013

B0506/13
TRAINING FLIGHTS TO SANTORINI AIRPORT MUST OBTAIN PERMISSION AT LEAST THREE HOURS PRIOR ETA. FOR PERMISSION CONTACT SANTORINI APP/TWR AT TEL. NUM :+302286028404, OR +302286028448. 11 JUN 03:00 2013 UNTIL 30 SEP 21:00 2013. CREATED: 10 JUN 06:42 2013

B0437/13
DUE TO LIMITED PARKING POSITIONS ALL GENERAL AVIATION FLIGHTS INTENDING TO LAND AT SANTORINI AIRPORT MUST OBTAIN PRIOR PERMISSION (PPR) FROM THE AIRPORT AUTHORITY AT LEAST 24HR PRIOR ETA. THE APPLICATION MUST INCLUDE:
1. AIRCRAFT REGISTRATION, TYPE, MTOW AND CALLSIGN
2. DATE OF ARRIVAL, ETA AND AIRPORT OF ORIGIN
3. DATE OF DEPARTURE, ETD AND DESTINATION AIRPORT
4. HANDLING AGENT
5. COMMUNICATION DETAILS (FAX, E-MAIL)
6. OPERATOR (IF APPLICABLE)
THE APPLICATION MUST BE ADDRESSED TO THE AIRPORT AUTHORITY AND SENT BY FAX(++302286033349) OR E-MAIL KASRGAE(AT)HCAA.GR.
THE AIRPORT AUTHORITY MUST ALSO BE NOTIFIED IN IN CASE OF SCHEDULE CHANGES OR CANCELATIONS OF PREVIOUSLY AUTHORIZED FLIGHTS. 01 JUN 00:01 2013 UNTIL 30 SEP 23:59 2013. CREATED: 24 MAY 07:40 2013

B0387/13
LGSR/SANTORINI:AERODROME HOURS OF SERVICE AS FLW:
FROM 09/05/2013 TILL 26/10/2013

A.FROM 09/05 TILL 28/05
MON,THU,FRI 0230-1800
TUE,WED 0230-1930
SAT 0230-1900
SUN 0230-2230

B.FROM 29/05 TILL 30/09
EUERY DAY 0001-2400

C.FROM 01/10 TILL 28/10
MON,WED,THU,FRI 0230-1800
TUE 0230-1930
SAT,SUN 0230-1900

OAL0755 LGSM-LGAV (27 Sep 1325 UTC)

NOTES:

1.ON 10/05 FRI 0700-1800
2.ON 18/05,25/5,05/10,12/10 SAT 0230-2030. 09 MAY 10:47 2013 UNTIL 26 OCT 23:59 2013. CREATED: 09 MAY 10:51 2013

M0392/13

SANTORINI TACAN SAN CH 111X U/S. 19 SEP 06:32 2013 UNTIL 30 SEP 23:59 2013.
CREATED:
19 SEP 06:40 2013

M0388/13

LGSR : NORTH ARRESTING GEAR OF RUNWAY 34R-16L IS REMOVED. 17 SEP 06:59 2013
UNTIL
17 DEC 15:00 2013. CREATED: 17 SEP 07:05 2013

M0188/13

HAF SERVICES WILL BE PROVIDED
A. EVERY DAY DURING DAYLIGHT AND THE REST HOURS OF THE DAY 30 MIN
PRIOR NOTICE.
B. WEEKEND AND PUBLISHED HOLIDAYS AFTER 30 MIN PRIOR NOTICE. 23 APR 07:11 2013
UNTIL 31 DEC 21:59 2013. CREATED: 23 APR 07:30 2013

M0408/08

SINK TYPE ARRESTING GEAR CABLE INSTALLED AND OPERATES AT THE
BEGINNING OF RWY 34R, DEFINED AS THE SOUTH ARRESTING GEAR OF RWY
34R/16L. 28 AUG 12:18 2008 UNTIL PERM. CREATED: 28 AUG 12:23 2008

ALTERNATE: LGTS/SKG (THESSALONIKI/MAKEDONIA, GREECE)

A1485/13

THESSALONIKI/MAKEDONIA/INTL:LIGHTS OF SIGNIFICANT LIGHTED
OBSTACLES IN THE VCY OF MAKEDONIA AP (AS LISTED IN ITEM 40 AND 41 OF
AIP GREECE AD 2 LGTS 2.23.3 AND ON TERMINAL AREA CHART-VFR ROUTES
MAKEDONIA TMA) 3KM WEST OF THE AP U/S (RADIO BROADCASTING AERIALS AT
PERAIA). 31 AUG 08:41 2013 UNTIL 31 DEC 23:59 2013. CREATED: 31 AUG 08:42 2013

A1484/13

LGTS AVGAS 100LL NOT AVAILABLE. 31 AUG 07:30 2013 UNTIL 31 DEC 23:59 2013.
CREATED:
31 AUG 08:40 2013

A1329/13

LGTS:PART OF RWY 16/34 BETWEEN 1800 METERS AND 1950 METERS FROM
THRESHOLD OF RWY 16 MAY BE SLIPPERY WHEN WET. 05 AUG 09:20 2013 UNTIL 31 DEC
07:30 2013. CREATED: 05 AUG 09:45 2013

A1177/13

REF AIP GREECE AD.2-LGTS-SID-1 ON SECOND PAGE OF AD2-LGTS-SID-1
SECTION GENERAL PARAGRAPH 3,AMEND TO READ PDG (PROCEDURE DESING
GRADIENT) 7.6 PER CENT(462FT/NM) INSTEAD OF 6.0 PER CENT (365FT/NM). 10 JUL
07:31 2013 UNTIL PERM. CREATED: 10 JUL 07:39 2013

A1116/13

TWY LINK J AND PART OF TWY F FROM HOLDING POINT RWY10 TO TWY A
CLOSED DUE WIP. 01 JUL 18:00 2013 UNTIL 31 DEC 23:59 2013. CREATED: 01 JUL 18:04
2013

A1105/13

LIGHTING OF TWY F PART BETWEEN TWY A TO THE HOLDING POINT OF RWY
28 OPERATES EVERY SECOND LAMP. 29 JUN 08:31 2013 UNTIL 31 DEC 06:30 2013.

OAL0755 LGSM-LGAV (27 Sep 1325 UTC)

CREATED:
29 JUN 08:39 2013

A0755/13
FISKA VOR FSK 116.4MHZ OUT OF SERVICE. 10 MAY 07:33 2013 UNTIL 31 DEC 12:00
2013.
CREATED: 10 MAY 07:38 2013

A0754/13
THESSALONIKI/ MAKEDONIA ILS/DME RWY10 (IMAK) 109.5MHZ/CH32X OUT
OF SERVICE. 10 MAY 07:28 2013 UNTIL 31 DEC 12:00 2013. CREATED: 10 MAY 07:32
2013

A0747/13
REF AIP GREECE,AD2-LGTS-ADC HAND AMEND TO INCLUDE TWO(2) HOT SPOTS
WITH RELATED TEXT AS FOLLOWS:
1.HS1 INTERSECTION OF RWYS:INTERSECTING RWYS WITH NEITHER SIGNAGE
NOR MARKING TO WARN AGAINST ENTRY TO RWY.
2.HS2 INTERSECTION OF TWYS F,E AND L:WIDE OPENING.
WHERE APPLICABLE MAKE SURE OF CORRECT TURN FROM APRON TO TWY F
BEFORE RWY 10/28. 08 MAY 06:00 2013 UNTIL PERM. CREATED: 08 MAY 06:14 2013

A0173/13
RWY 10/28 AND TLINKS F1 AND F2 CLOSED DUE TO WIP.
PART OF RWY 10/28 FROM TLINK N TO TWY A IS AVAILABLE ONLY FOR A/C
TAXIING. 01 FEB 15:34 2013 UNTIL 30 SEP 12:30 2013. CREATED: 01 FEB 15:35 2013

A1584/12
CAUTION ADVISED ON TWY A DUE TO PAVEMENT DEFORMATION LYING
APPROXIMATELY 160M FROM HOLDING POINT OF RWY 34,EAST OF THE TWY
CENTERLINE. 09 OCT 08:00 2012 UNTIL 30 SEP 12:00 2013. CREATED: 09 OCT 08:59
2012

A1582/08
THE USE OF THE FOLLOWING SIDS IS SUSPENDED:
1.ALIKO 1B (REF AIP GREECE VOLII PAGE LGTS 15, 08 JUL 2004/3)
2.ALIKO 1A (REF AIP GREECE VOLII PAGE LGTS 17, 08 JUL 2004/3)
3.ALIKO 1C (REF AIP GREECE VOLII PAGE LGTS 18, 08 JUL 2004/3)
4.ALIKO 1E (REF AIP GREECE VOLII PAGE LGTS 20, 08 JUL 2004/3. 07 AUG 09:28 2008
UNTIL PERM. CREATED: 07 AUG 07:38 2008

A1581/08
THE USE OF THE FOLLOWING STARS IS SUSPENDED:
1.FSK 1F, ODIKO 1L (REF AIP GREECE VOLII PAGE LGTS 10, 08 JUL
2004/3)2.FSK 1F, ODIKO 1F (REF AIP GREECE VOLII PAGE LGTS 11, 08 JUL
2004/3)
3.FSK 3P, ODIKO 1P (REF AIP GREECE VOLII PAGE LGTS 12, 08 JUL
2004/3)4.FSK 3H, ODIKO 1H (REF AIP GREECE VOLII PAGE LGTS 13, 08 JUL
2004/3)
5.FSK 3D, ODIKO 1D (REF AIP GREECE VOLII PAGE LGTS 14, 08 JUL 2004/3. 07 AUG
09:26 2008 UNTIL PERM. CREATED: 07 AUG 07:37 2008

M0256/13
REF MAIP GREECE VOL-2B EFF 01 JUN 2013 THE USE OF THE FOLLOWING
SIDS IS SUSPENDED:
1.ALIKO 1C ON PAGE T-2-18
2.ALIKO 1B ON PAGE T-2-21
3.ALIKO 1E ON PAGE T-2-25
4.ALIKO 1A ON PAGE T-2-27. 04 JUN 08:00 2013 UNTIL PERM. CREATED: 04 JUN 08:42
2013

OAL0755 LGSM-LGAV (27 Sep 1325 UTC)

M0633/12

REF MAIP GREECE VOL-2B EFF 01 DEC 2012 THE USE OF THE FOLLOWING
STARS IS SUSPENDED:

1.FSK 3D,ODIKO 1D ON PAGE T-2-2

2.FSK 1F,ODIKO 1F ON PAGE T-2-3

3.FSK 1F,ODIKO 1L ON PAGE T-2-4

4.FSK 3H,ODIKO 1H ON PAGE T-2-5

5.FSK 3P,ODIKO 1P ON PAGE T-2-6. 05 DEC 06:24 2012 UNTIL PERM. CREATED: 05 DEC
07:08 2012



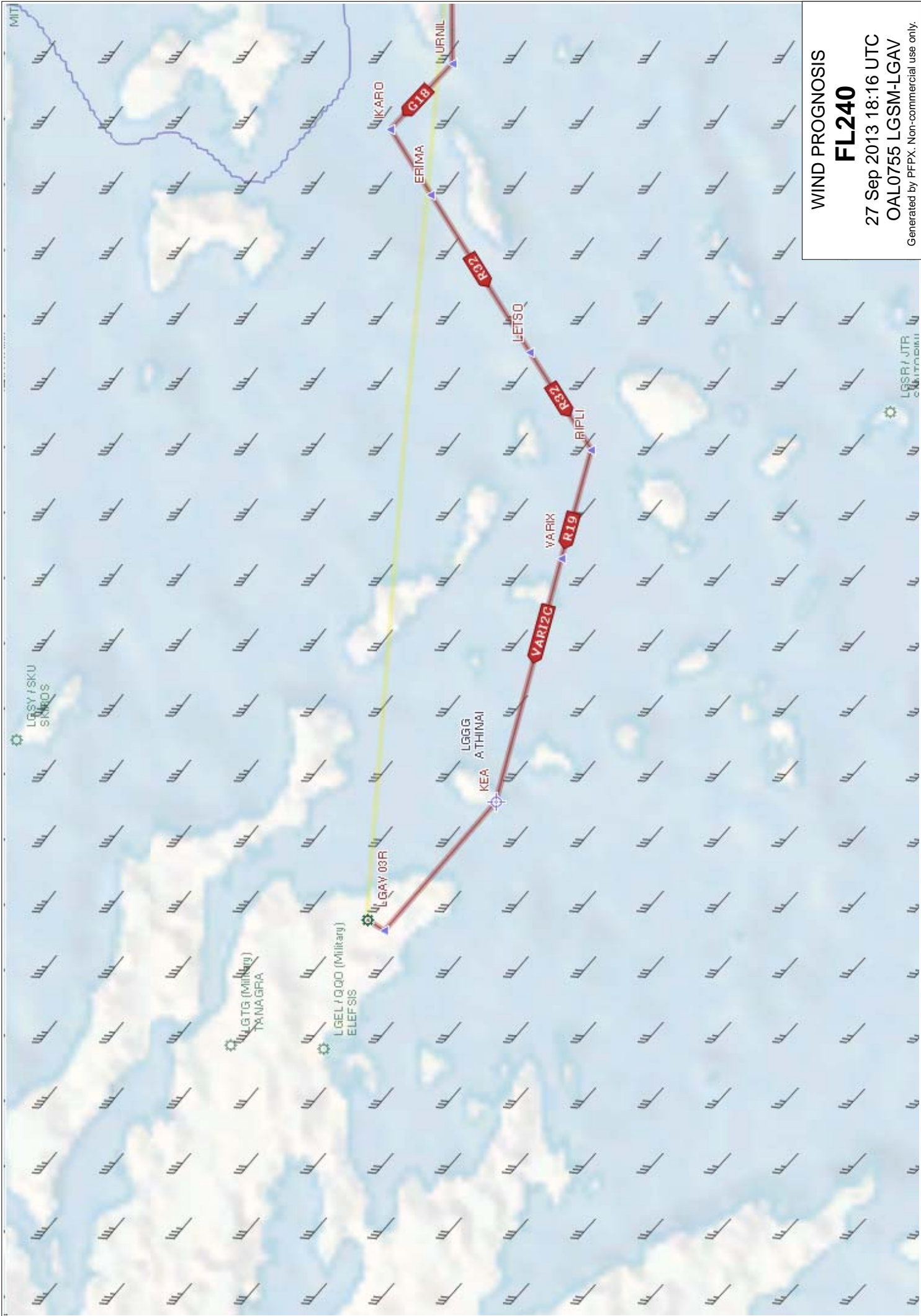
WIND PROGNOSIS
FL240
 27 Sep 2013 18:16 UTC
 OAL0755 LGSM-LGAV
 Generated by PFPX. Non-commercial use only.



WIND PROGNOSIS
FL260
 27 Sep 2013 18:16 UTC
 OAL0755 LGSM-LGAV
 Generated by PFPX. Non-commercial use only.

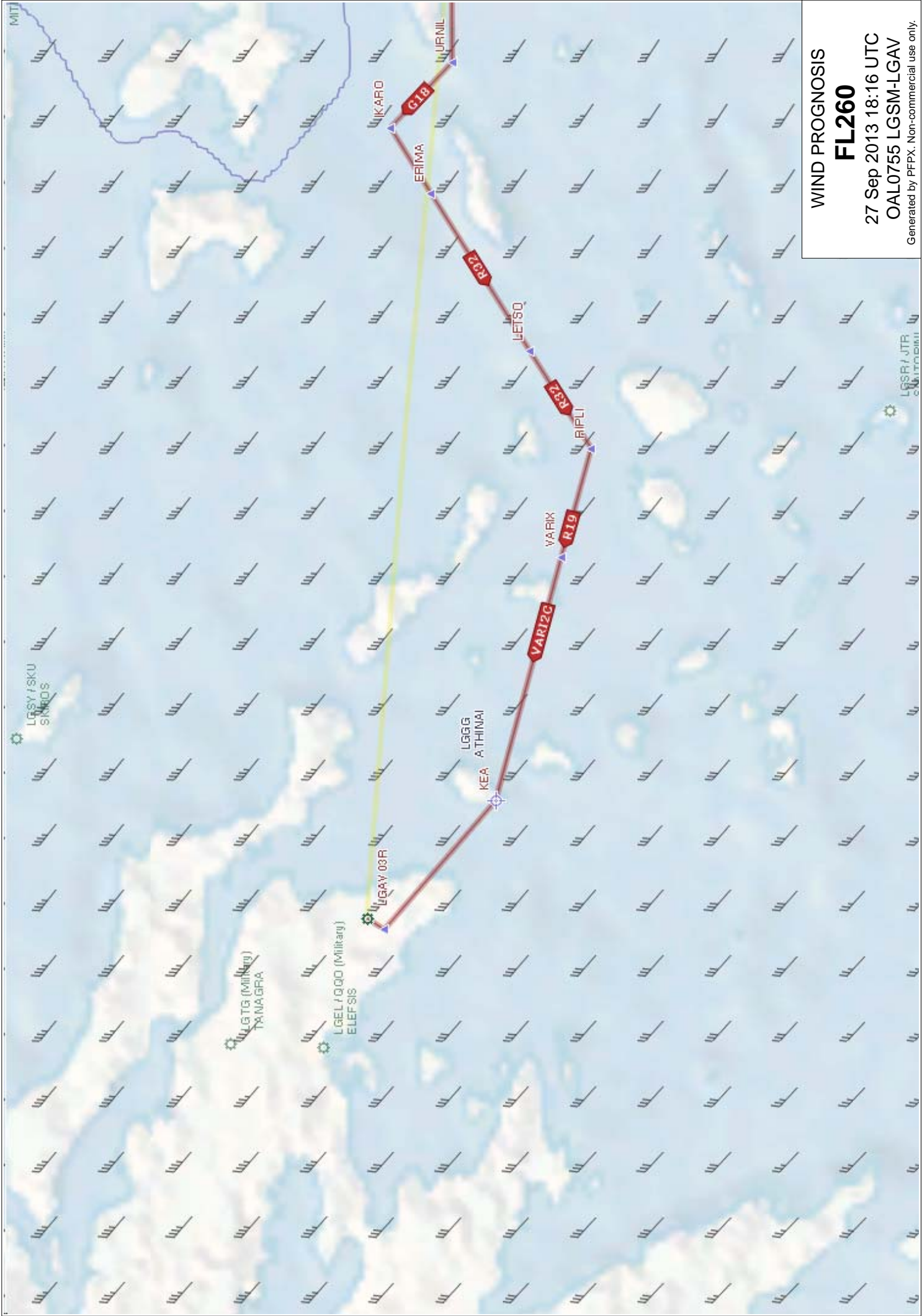


WIND PROGNOSIS
FL280
 27 Sep 2013 18:16 UTC
 OAL0755 LGSM-LGAV
 Generated by PFPX. Non-commercial use only.

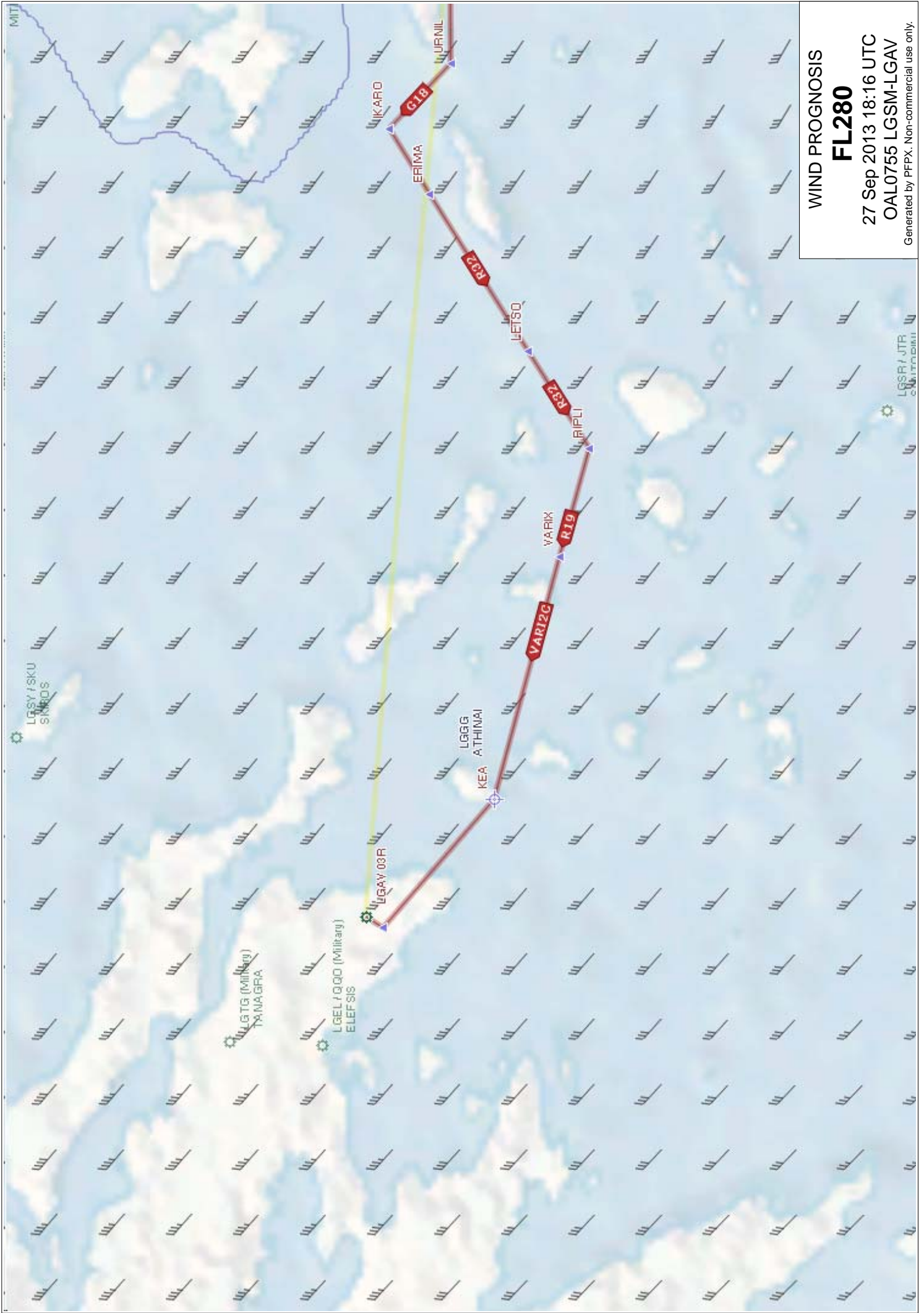


WIND PROGNOSIS
FL240
 27 Sep 2013 18:16 UTC
 OAL0755 LGSM-LGAV
 Generated by PFPX. Non-commercial use only.

LGSM/JTR
 SINGAPORE



WIND PROGNOSIS
FL260
27 Sep 2013 18:16 UTC
OAL0755 LGSM-LGAV
Generated by PFPX. Non-commercial use only.



WIND PROGNOSIS
FL280
 27 Sep 2013 18:16 UTC
 OAL0755 LGSM-LGAV
 Generated by PFPX. Non-commercial use only.

PGDE14 EGRR 261800

ISSUED BY WAFC LONDON
PROVIDED BY WAFC LONDON
FIXED TIME PROGNOSTIC CHART
ICAO AREA EURO SIGWX
FL 100-450
VALID 18 UTC 27 SEP 2013

CB IMPLIES TS, GR
MOD OR SEV TURB AND ICE

UNITS USED: HEIGHTS IN FLIGHT LEVELS
CHECK SIGMET, ADVISORIES FOR
TC AND VA, AND ASHTAM AND
NOTAM FOR VA

CAT AREAS

1 420
290

