



Flight Briefing Package

OAL0958 LGAV-LGKV

27 Sep 1725 UTC

OFP #0

ATHENS/ELEFThERIOS VENIZELOS
(GREECE)

-

KAVALA/MEGAS ALEXANDROS
(GREECE)

PREPARED BY MICHAIL IONAS

OPS@OAV.GR

27 SEP 1639 UTC

OAL0958 LGAV-LGKV (27 Sep 1725 UTC)

RELEASE DETAILS SX-OAJ LGAV-LGKV RELEASE # 1

FUEL PLANNING (KG)		LGAV - LGKV	
TRIP		1,990	00:39
CONT 5%		177	00:05
ALTN	LGAL	876	00:18
FINAL RESV		1,063	00:30
MIN T/O		4,106	01:32
EXTRA		1	00:00
TAXI		120	00:10
RELEASE	LGAV	4,227	01:42
REMAINING	LGKV	2,057	00:48

LOAD PLANNING (KG)		PLANNED	LIMIT
PAYLOAD		13,476	
FUEL		4,227	20,820
ZERO FUEL WEIGHT	LIMIT	56,467	61,689
RAMP WEIGHT		60,694	79,100
TAKE-OFF WEIGHT		60,574	78,900
LANDING WEIGHT		58,584	66,360
UNDERLOAD		5,222	LIM ZFW

OAL0958 LGAV-LGKV (27 Sep 1725 UTC)

OLYMPIC AIR VIRTUAL FLIGHTPLAN - IFR OAL0958 SX-OAJ LGAV-LGKV

ALL WEIGHTS IN KILOGRAMS (KG)

STD 27SEP/1725Z

PREPARED 27SEP/1639Z BY MICHAEL IONAS OPS@OAV.GR

COMMANDER: SAKIS GALANIS / PARK LGAV: B11 / PARK LGKV: 2
CONTACT DISPATCH CONTROL 131.950 20MIN BEFORE PUSHBACK (AVAILABLE 1730Z-2200Z)
IF NOT AVAILABLE CONTACT OC/DISPATCH - OAV TEAMSPEAK (AVAILABLE 24H)

OAL0958 OFP 1 SX-OAJ/B737-8ERW CF SEL/ELAD ROUTE: LGAVLGKV01
DEP: LGAV/ATH 03R ELEV 308 FT CRZ SPD: M.78 TTL G/C DIST: 182 NM
ARR: LGKV/KVA 05R ELEV 18 FT INIT ALT: FL230 TTL F/P DIST: 221 NM
BURN ADJ: 103.0% TTL AIR DIST: 227 NM
AVG WIND CMP: HD009 KT
ALT: LGAL/AXD 07 ELEV 24 FT 74 NM

Table with columns: CONFIG, DOW, PAX, CARGO, TOTAL, ULOAD LIM, ZFW, TOW, LDW. Rows include STANDARD, MAX, PLN, ACT configurations.

** TAKE-OFF DATA LGAV 03R **

COND: 60574 KG - RWY DRY @ +24°C Q1012 090/06 // LMT: CLIMB
CONFIG: FLAPS 1 - D-T02 +47C
A/I OFF - A/C ON

SPEEDS: V1/142 - VR/143 - V2/146

ENG OUT: AT 8 DME 'SAT' 109.6 RT TO ITCPT AND PRCD ON R 340 INBD 'KEA' 115.0 .
AT 15 DME 'KEA' 115.0 ENTER HLDG (160 INBD,LT)

** LANDING DATA LGKV 05R **

COND: 58584 KG - RWY DRY @ +25°C Q1012 000/00 // LMT: STRUCT
CONFIG: FLAPS 30
A/I OFF - A/C ON

SPEEDS: VREF/140 - VAPP/145

ENG OUT: NONE

Table with columns: FUEL, CORR, ENDUR. Rows include TRIP, CONT 5%, ALTN LGAL, FINAL RESV, MIN T/O, EXTRA, TAXI, RELEASE. Includes CAPTAINS SIGNATURE and I ACCEPT THIS OFP AND I AM FAMILIAR WITH THE PLANNED ROUTE AND AERODROMES.

FUEL TANK CAP 20820 KG / MAX EXTRA FUEL 7776 KG LIM BY LDW
TRIP CORR FOR 1000 KG TOW INCR: +12 KG / 1000 KG TOW DECR: -10 KG

OAL0958 LGAV-LGKV (27 Sep 1725 UTC)

2000 FT LOWER: +35 KG / EET 00:40 CLB: 250/280/78 DES: 78/280/250

LGAV/ATH	STD 17:25	ETD 17:25	ACT OFBL	EST T/O 17:35	ACT T/O
LGKV/KVA	STA 18:30	ETA 18:19	ACT ONBL	EST LDG 18:14	ACT LDG
			TTL BLCK		TTL FLT

ATC ROUTE: N0479F230 NEVR1T NEVRA G33 LMO AMAL1H

ALTERNATE PLANNING

ALTN/RWY	DIST	ALT/FL	COMP	TIME	FUEL	DIFF	ROUTE
LGAL/07	74	FL130	TL004	00:18	876	-	SOSU1N ALX GOLDO
LBDP/30	79	FL140	HD008	00:20	941	+65	KPL DCT PDV
LGTS/10	94	FL180	HD006	00:22	1056	+180	ASK01A PEREN G12 ARNAS ARNA3D
LGLM/22L	131	FL230	TL012	00:27	1223	+347	ASK01N ASKOS G12 SUTIS H59 KPL KPL1C

AWY	WAYPOINT NAME	MT	ALT TMP	WND/VEL FREQ	TAS GS	REM DIST	FUEL REM / USED POSITION	LEG ETO / ATO	ACC
	LGAV/03R ATHENS/ELEFThERI		308				4.1 / 0.1 221 N3756.6 E02357.7/.....	
NEVR1T	KRO KARISTOS	077	*CLB	112.20		27 194	3.3 / 0.9 N3800.6 E02430.7	07 00:07/.....	
NEVR1T	NEVRA	013	*CLB			11 183	3.2 / 1.1 N3810.1 E02434.6	01 00:08/.....	
	*TOC	013	FL230 -22	307/030	479 467	1 182	3.2 / 1.1 N3811.8 E02434.9	01 00:09/.....	
G33	AMISI	013	FL230 -22	305/032	479 467	42 140	2.8 / 1.4 N3851.8 E02449.1	05 00:14/.....	
G33	KOROS	013	FL230 -22	304/032	478 467	16 124	2.7 / 1.5 N3906.1 E02455.1	02 00:16/.....	
G33	LUPIS	013	FL230 -22	303/032	478 467	7 117	2.7 / 1.6 N3913.6 E02458.5	01 00:17/.....	
G33	*TOD	013	FL230 -22	303/032 109.20	478 468	42 75	2.4 / 1.9 N3953.7 E02513.3	05 00:22/.....	
G33	LMO LIMNOS	013	*DES	109.20		3 73	2.3 / 1.9 N3955.2 E02514.2	01 00:23/.....	
AMAL1H	AMALA	331	*DES			43 30	2.2 / 2.0 N4034.1 E02450.1	10 00:33/.....	
AMAL1H	KPL KAVALA	330	*DES	108.80		23 7	2.1 / 2.1 N4055.8 E02437.9	05 00:38/.....	
AMAL1H	LGKV/05R KAVALA/MEGAS ALE	225	18			7	2.1 / 2.1 N4054.4 E02436.3	01 00:39/.....	

OAL0958 LGAV-LGKV (27 Sep 1725 UTC)

WIND INFORMATION - OBS 270600

```
-----  
(CLIMB)                AMISI                KOROS                (DESCENT)  
FL220 308/029 -20 FL270 307/037 -32 FL270 306/038 -32 FL220 299/030 -21  
FL180 307/023 -10 FL250 306/035 -27 FL250 305/035 -27 FL180 301/023 -13  
FL130 310/016 -2  FL230 305/033 -22 FL230 304/033 -22 FL130 311/016 -4  
FL090 317/010 +6  FL210 305/029 -18 FL210 304/029 -18 FL090 329/011 +5  
4000  331/007 +16 FL190 305/025 -13 FL190 304/025 -14 4000 010/006 +15  
-----
```

END FLIGHTPLAN OAL0958 SX-OAJ LGAV-LGKV 27SEP2013

OAL0958 LGAV-LGKV (27 Sep 1725 UTC)

(FPL-OAL0958-IS
-B738/M-SDE1FGHIJ1RWXYZ/LB1
-LGAV1725
-N0479F230 NEVRA G33 LMO
-LGKV0039 LGAL
-PBN/A1B1C1D1L101S1 NAV/RNVD1E2A1 DOF/130927 REG/SXOAJ SEL/ELAD RVR/75
OPR/OLYMPIC AIR VIRTUAL
-E/0132)

OAL0958 LGAV-LGKV (27 Sep 1725 UTC)

WEATHER BRIEFING - GENERATED 27 SEP 2013 16:39 UTC

LGAV LGKV LGAL LBDP LGTS LGLM

ORIGIN: LGAV/ATH (ATHENS/ELEFThERIOS VENIZELOS, GREECE)

LGAV 271550Z 09006KT 9999 FEW035 24/16 Q1012 NOSIG
LGAV 271100Z 2712/2812 07010KT 9999 FEW025
 BECMG 2716/2718 VRB03KT
 BECMG 2807/2809 12010KT

DESTINATION: LGKV/KVA (KAVALA/MEGAS ALEXANDROS, GREECE)

LGKV 271520Z 00000KT 9999 FEW025TCU SCT080 BKN180 25/19 Q1012
LGKV 271400Z 2715/2724 22008KT 9999 FEW018 SCT030
 PROB40 TEMPO 2715/2718 5000 TSRA FEW010 FEW018CB BKN030

ALTERNATE: LGAL/AXD (ALEXANDROUPOLIS/DIMOKRITOS, GREECE)

LGAL 271550Z 35009KT 9999 -RA FEW018CB SCT020TCU BKN180 20/16 Q1013
AMD LGAL 271539Z 2715/2724 02012KT 9999 FEW018 SCT030
 TEMPO 2715/2720 5000 TSRA FEW010 SCT018CB BKN020

ALTERNATE: LBDP/PDV (PLOVDIV, BULGARIA)

LBDP 271500Z 25004MPS 9999 SCT075 BKN090 22/09 Q1014 NOSIG
LBDP 271034Z 2712/2812 27008G15MPS 9999 SCT050 BKN080
 TEMPO 2712/2718 5000 SHRA SCT033CB BKN050
 BECMG 2720/2722 30007MPS

ALTERNATE: LGTS/SKG (THESSALONIKI/MAKEDONIA, GREECE)

LGTS 271550Z 19006KT 9999 FEW025 SCT180 28/10 Q1011 NOSIG
LGTS 270500Z 2706/2806 32008KT 9999 FEW030
 BECMG 2712/2714 15012KT 9999 SCT040
 BECMG 2720/2722 VRB03KT 9999 FEW030
 BECMG 2804/2806 14004KT 7000 FEW010 SCT025

ALTERNATE: LGLM/LXS (LIMNOS/IFAISTOS, GREECE)

LGLM 271550Z 18005KT 9999 FEW020 SCT180 24/19 Q1012
LGLM 271400Z 2715/2724 18010KT 9999 FEW018
 PROB30 TEMPO 2715/2718 5000 SHRA FEW018CB BKN020
 BECMG 2716/2718 01010KT

OAL0958 LGAV-LGKV (27 Sep 1725 UTC)

NOTAM BRIEFING - GENERATED 27 SEP 2013 16:39 UTC

LGAV LGKV LGAL LBPB LGTS LGLM

ORIGIN: LGAV/ATH (ATHENS/ELEFThERIOS VENIZELOS, GREECE)

A1641/13

KEA VOR 'KEA' 115.00MHZ ON TEST DO NOT USE. KEA DME CH97X (ID:KEA)
NORMALLY OPERATING. 23 SEP 09:27 2013 UNTIL 30 SEP 11:30 2013. CREATED: 23 SEP
09:30 2013

A1640/13

CONCENTRATION OF BIRDS INCLUDING
FALCONS,BUZZARDS,STARLINGS,SWALLOWS AND OTHER SMALL PASSERINES IN
THE VICINITY OF THE AIRPORT.
CAUTION ADVISED. 01 OCT 00:01 2013 UNTIL 30 NOV 23:59 2013. CREATED: 23 SEP
08:32 2013

A1307/13

REF AIP GREECE AIRAC AMDT 8-13(WEF 22 AUG 2013) AD2-LGAV-4,
SECTION 2.12,COL 5 LINE 4,
AMEND TO READ RWY21R END COORDINATES AS FOLLOWS:
375517,46N0235507,99E. 22 AUG 00:01 2013 UNTIL PERM. CREATED: 31 JUL 08:47 2013

A1287/13

CONCENTRATION OF BIRDS INCLUDING FALCONS,DOVES,STORKS,
SWALLOWS AND SWIFTS IN THE VICINITY OF THE AIRPORT.
CAUTION ADVISED. 01 AUG 00:00 2013 UNTIL 30 SEP 23:59 2013. CREATED: 29 JUL
09:35 2013

A1243/13

ALL GENERAL AVIATION FLIGHTS WITH MTOW MORE THAN 5700 KG SHALL
SEND A SCHEDULE MOVEMENT ADVICE (SMA) MESSAGE TO THE AIRPORT
SCHEDULE FACILITATOR IN A TURNAROUND FORMAT ACCORDING TO IATA
STANDARD SCHEDULE INFORMATION MANUAL CHAPTER 6.10.
SMA SHALL BE SENT DURING WORKING HOURS 0830-1600 LOCAL TIME VIA
SITA FAX OR E-MAIL WITH COPIES TO SCHEDULING AND PLANNING DEPT AND
TO AIRPORT SERVICES OPERATION CENTER (ASOC).
CANCELLATION MESSAGES SHALL BE SENT AS SOON AS FLIGHTS WILL NOT
OPERATE.
ABOVE PROCEDURE DOES NOT APPLY TO HELICOPTERS VIP MEDICAL AND SAR
FLIGHTS.
FOR GENERAL AVIATION FLIGHTS WITH MTOW LESS THAN 5700 KG AIP GREECE
AD2 2.20.1.2 APPLIES.
CONTACT DETAILS :
SCHEDULE FACILITATOR SITA:ATHHAXH,
TEL:21035361189/190/811/813/815/816, FAX:2103537418
E-MAIL : ESAGOS-HSCA(AT)ATHENSAIRPORT.GR
LGAV ASOC SITA: ATHIAXH, TEL: 2103540000, FAX: 2103540095
E-MAIL: ASOC-SENIOR-SRV(AT)AIA.GR
LGAV SCHEDULING AND PLANNING DEPT SITA: ATHSCXH, TEL: 2103531425,
FAX: 2103532254, E-MAIL: SCHED-PLANNING (AT) AIA.GR. 23 JUL 09:36 2013 UNTIL
30 SEP 23:59 2013. CREATED: 23 JUL 09:39 2013

A1190/13

OBSTACLE LIGHTS ON BOYATI ATHINAI ERT RADIO MAST OUT OF SERVICE.
OBST COORDINATES (NOT IN WGS 84) 380904N0235138E. REF AIP-GREECE ENR
5.4-2. AND ENR 1.1.7.6. 14 JUL 12:00 2013 UNTIL 31 DEC 23:59 2013. CREATED:
14 JUL 11:37 2013

OAL0958 LGAV-LGKV (27 Sep 1725 UTC)

A1020/13

REF. AIP GREECE AD2-LGAV-9 PARAGR 2.20.2.1-J 20 SEP 2012
ADD B 747-800 TO EXISTING A/C TYPES. 14 JUN 05:27 2013 UNTIL PERM. CREATED:
14 JUN 05:33 2013

A1018/13

REF AIP GREECE AD-2-LGAV-STAR-3 28 JUN 2012, IN THE HOLDING
PATTERN AT KRO VOR/DME, ON THE SEGMENT NEVRA-KRO VOR/DME, ON THE
SEGMENT KEPIR-KRO VOR/DME AND ON THE SEGMENT VARIX-KRO VOR/DME,
AMEND TO READ 7000FT INSTEAD OF 6000FT. 14 JUN 05:21 2013 UNTIL PERM. CREATED:
14 JUN 05:25 2013

A1016/13

REF AIP GREECE, THE PROCEDURES DESCRIBED IN THE FOLLOWING PAGES
ARE SUSPENDED.

1. AD2-LGAV-SID-2 28 JUN 2012
2. AD2-LGAV-SID-7 28 JUN 2012
3. AD2-LGAV-SID-10 28 JUN 2012
4. AD2-LGAV-SID-12 28 JUN 2012
5. AD2-LGAV-STAR-2 28 JUN 2012. 14 JUN 05:08 2013 UNTIL PERM. CREATED: 14 JUN
05:17 2013

A0997/13

LGAV/EL VENIZELOS/INTL:AT AREA BEYOND 10NM AND ALTITUDE BELOW
4000FT FOR ANGLES GREATER THAN 18 DEGREES FROM THE LOCALIZER CENTER
LINE THE ILS RWY 03R (I-ATR) IS OUT OF USE DUE TO FALSE CAPTURE. 12 JUN 07:59
2013 UNTIL PERM. CREATED: 12 JUN 08:45 2013

A0893/13

REFERENCE AIP GREECE AD2-LGAV-SID-1 28JUN 2012 ON THE DESCRIPTIONS
OF SIDS RWY 03R:

- 1)AT THE END OF EACH DESCRIPTION OF THE SIDS
NEVRA1J,KEPIR1J,VARIX1J,KEA1J,GENDO1J,SOREV2J,VELOP2J,ASTOV2J,NEMES3
J,RILIN2J,PIKAD2J,RIMAX1J,ABLON2J, DELETE:SEE NOTE 1.
- 2)AT THE END OF THE DESCRIPTION OF BIBEX1J, HAND AMEND TO READ:SEE
NOTE, INSTEAD OF:SEE NOTE 1 AND 2.
- 3)AT THE END OF DESCRIPTIONS OF SIDS RWY 03R:
A. DELETE NOTE 1:DO NOT CLIMB ABOVE 4000FT(QNH)UNTIL REACHING
14DME/KRO,UNLESS CLEARED BY ATC.
B. HAND AMEND TO READ NOTE:THIS SID SHOULD BE USED FOR DESTINATION
PAROS AIRPORT(LGPA),INSTEAD OF:NOTE 2:THIS SID SHOULD BE USED FOR
DESTINATION PAROS AIRPORT(LGPA).
- 4.AT EACH DESCRIPTIOPN OF THE SIDS KEA1J,
BIBEX1J,GENDO1J,SOREV2J,VELOP2J,ASTOV2J,NEMES3J,RILIN2J,PIKAD2J,
RIMAX1J,ABLON2J, HAND AMEND TO READ:CLIMB ON RADIAL 048 SAT TO
1100FT(QNH).AT 1100FT(QNH)TURN RIGHT,INTERCEPT AND FOLLOW RADIAL 266
KRO TO RADIAL 266 KRO/14DME FIX NOT ABOVE 4000FT(QNH) UNLESS
OTHERWISE INSTRUCTED BY ATC,INSTEAD OF: CLIMB ON RADIAL 048 SAT
TO1100FT(QNH).AT 1100FT(QNH) TURN RIGHT, INTERCEPT AND FOLLOW RADIAL
266 KRO CLIMBING TO 4000FT(QNH).MAINTAIN 4000FT(QNH) UNTIL PASSING
14DME KRO. 27 MAY 09:48 2013 UNTIL PERM. CREATED: 27 MAY 09:53 2013

A0716/13

REFERENCE AIP GREECE AD2-LGAV:

- 1)ON AD2-LGAV-SID-1 CANCEL THE SID NEMES 3J 2)ON AD2-LGAV-SID-4
CANCEL THE SID'S NEMES 1T AND GERMI 1T 3)ON THE AD2-LGAV-SID-5
CANCEL THE SID NEMES 3L 4)ON THE AD2-LGAV-SID-9 CANCEL THE SID NEMES
3G
- 5)ON THE AD2-LGAV-SID-11 CANCEL THE SID NEMES 3F. 29 APR 07:33 2013 UNTIL PERM.
CREATED: 29 APR 07:35 2013

OAL0958 LGAV-LGKV (27 Sep 1725 UTC)

A0518/13

REF AIP GREECE PART 3 AD2-LGAV-2.21.1.3 RUNWAY USE SYSTEM
ADDITIONAL HOURS OF LGAV - NOISE ABATMENT PROCEDURES AS FOLLOW :
31 MAR TILL 27 OCT 2013 DAILY 12:00-15:00. 31 MAR 02:00 2013 UNTIL 27 OCT 02:00
2013. CREATED: 29 MAR 04:55 2013

A0103/12

ELEFThERIOS VENIZELOS AIRPORT HAS BEEN APPROVED BY HCAA TO BE USED
BY B747-800 AIRCRAFT AS ALTERNATE OR FOR A LIMITED NUMBER OF FLIGHTS.
THE EXISTING ILS PROCEDURES HAVE BEEN DESIGNED TAKING INTO
CONSIDERATION THE COLLISION RISK MODEL. 24 JAN 08:19 2012 UNTIL PERM. CREATED:
24 JAN 08:40 2012

DESTINATION: LGKV/KVA (KAVALA/MEGAS ALEXANDROS, GREECE)

B0531/13

LGKV/MEGAS ALEXANDROS:AERODROME HOURS OF SERVICE AS FLW:
FROM 20/06/2013 TILL 26/10/2013

MON,TUE,WED,THU,FRI	0330-1715	
SAT	0530-1115	1800-1900
SUN	0545-1230	1600-1715

NOTES:

- 1.ON 21/06 FRI 0330-1800
- 2.ON 22/06 SAT 0530-1900
- 3.ON 23/6 SUN 0545-1715
- 4.FROM 29/6 TILL 03/8 SAT 0530-1115 1630-1900
- 5.FROM 10/8 TILL 24/8 SAT 0530-1115 1500-1900. 18 JUN 07:20 2013 UNTIL 26
OCT 23:59 2013. CREATED: 18 JUN 07:23 2013

B0453/13

MIL FLTS FOR FIRE FIGHTING PURPOSE WILL TAKE PLACE WITHIN AREA 5NM
RAD 405450N0243711E. KAVALA/MEGAS ALEXANDROS TMA/CTR/ATZ AFFECTED.
ALL ACFT SHALL FILE FPLS AND CONTACT APPROPRIATE ATS UNIT. 0000FT AMSL -
03000FT
AMSL, DAILY SR-SS, 14 JUN 03:05 2013 UNTIL 31 OCT 14:25 2013. CREATED: 29 MAY
11:52 2013

B0385/13

CONCENTRATION OF BIRDS (INCLUDING GULLS,STORKS,FALCONS,SWALLOWS,BEE
EATERS,ROOKS,CROWS,SWIFTS) IN THE AIRPORT VICINITY.
CAUTION ADVISED. 08 MAY 14:39 2013 UNTIL 15 OCT 20:59 2013. CREATED: 08 MAY
14:40 2013

B0251/13

ALL GENERAL AVIATION AND TRAINING FLIGHTS MUST REQUEST PRIOR
APPROVAL FROM KAVALA AIRPORT AUTHORITIES AT LEAST 24 HOURS BEFORE
THE ESTIMATED TIME OF ARRIVAL TO LGKV DUE TO INCREASED AIR TRAFFIC
WORKLOAD. PRIOR COORDINATION WITH AIRPORT AUTHORITIES ON TEL
+302591053404 OR BY E-MAIL:D18IC AT HCAA.GR. 01 APR 05:17 2013 UNTIL 26 OCT
21:00 2013. CREATED: 01 APR 05:21 2013

M0394/13

ARRESTING GEAR (HOOK) RWY 05R CONNECTED 1709FT FROM THRESHOLD RWY
05R EVERY DAY EXCEPT WEEKENDS AND HOLIDAYS. WEEKEND BEGINS FRI 11:30
TILL MON 04:00 UTC. FOR ANY EXCEPTION PRIOR NOTICE IS REQUIRED.
ARRESTING GEAR (HOOK) RWY 23L UNSERVICEABLE UNTIL FURTHER NOTICE. 19 SEP 09:27
2013 UNTIL 26 OCT 21:59 2013. CREATED: 19 SEP 10:10 2013

OAL0958 LGAV-LGKV (27 Sep 1725 UTC)

M0280/13

KAVALA/MEGAS ALEXANDROS TACAN KRP CH90X OPERATIONAL BUT WITHOUT
BACKUP STATION. 28 JUN 05:58 2013 UNTIL 31 DEC 23:59 2013. CREATED: 28 JUN 06:06
2013

M0161/11

LGKV ARRESTING BARRIERS (NETS) OF RWYS 23R AND 05R COMPLETELY
WITHDRAWN.

REF AIP AGA 2-6-4 KAI 2-6-5, MAIP SUPPLEMENT VOL-1 PAGE K-4-1
MAIP VOL-2 PAGE K-5-1 MAIP VOL-3 PAGE D-37.-. 04 APR 11:55 2011 UNTIL PERM.
CREATED: 04 APR 12:01 2011

ALTERNATE: LGAL/AXD (ALEXANDROUPOLIS/DIMOKRITOS, GREECE)

B0790/13

WIND DIRECTION AND SPEED INTICATORS OF RWYS 07 AND 25 OUT OF
SERVICE. 14 SEP 15:47 2013 UNTIL 31 OCT 07:00 2013. CREATED: 14 SEP 15:55 2013

B0785/13

LGAL/DIMOKRITOS AERODROME HOURS OF SERVICE AS FLW:

FROM 13/09/2013 TILL 26/10/2013

MON	0400-0800	1330-1900
TUE	0400-0800	1300-1900
WED	0400-0800	1630-1900
THU	0400-0800	1300-1900
FRI	0400-0800	1230-2000
SAT	0300-0700	1300-1530
SUN	0600-0800	1330-1900

NOTES:

1.ON 14/09 SAT 0300-0700 1400-1900
2.ON 15/09 SUN 0130-0715 1330-1730
3.ON 28/09,05/10,12/10,19/10,26/10 SAT 0400-0700 1330-1530
4.ON 04/10,11/10,18/10,25/10 FRI 0400-0800 1230-1900. 13 SEP 08:53 2013
UNTIL 26 OCT 23:59 2013. CREATED: 13 SEP 08:55 2013

M0355/13

ALEXANDROUPOLIS/DIMOKRITOS: MILITARY FREQUENCY 257.800 MHZ OUT OF
SERVICE. 21 AUG 17:40 2013 UNTIL 15 DEC 16:00 2013. CREATED: 21 AUG 17:51 2013

ALTERNATE: LBPD/PDV (PLOVDIV, BULGARIA)

A1146/13

DME PDV CH96X PART OF DVOR/DME PDV OUT OF SERVICE. 07 OCT 07:00 2013 UNTIL 07
OCT 09:00 2013. CREATED: 27 SEP 05:45 2013

A1145/13

DVOR PDV 114.9MHZ PART OF DVOR/DME PDV OUT OF SERVICE. 07 OCT 09:00 2013 UNTIL
07 OCT 11:00 2013. CREATED: 27 SEP 05:43 2013

A1144/13

ILS IPD RWY 30 OUT OF SERVICE. 08 OCT 07:00 2013 UNTIL 08 OCT 15:00 2013.
CREATED:
27 SEP 05:39 2013

A1143/13

LM P RWY 30 OUT OF SERVICE. 07 OCT 11:00 2013 UNTIL 07 OCT 13:00 2013. CREATED:

OAL0958 LGAV-LGKV (27 Sep 1725 UTC)

27 SEP 05:36 2013

A1142/13

LO PDV RWY 30 OUT OF SERVICE. 07 OCT 13:00 2013 UNTIL 07 OCT 15:00 2013.

CREATED:

27 SEP 05:33 2013

A1139/13

ALL FLIGHTS PROHIBITED DUE TO TRAINING FLT OF UNMANNED ACFT

WI AREA OF COORD:

420630N 0245640E-421224N 0245713E-421256N 0251336E-

420538N 0250200E-420630N 0245640E.

INFORMATION CONCERNING ACTIVATION/DEACTIVATION

OF THE AREA DURING PLANNED HOURS OF ACTIVITY WILL

BE OBTAINED FROM ATC.

CTR PLOVDIV AFFECTED. GND - 2100M AMSL, 28 SEP 06:00 2013 UNTIL 28 SEP 13:00 2013. CREATED: 26 SEP 07:59 2013

A1103/13

TRIGGER NOTAM - PERM AIRAC AIP AMDT 08/13 WEF 14 NOV 2013

PLOVDIV AD - IMPLEMENTATION OF FREQUENCY 127.200 MHZ FOR ATIS. 14 NOV 00:00

2013 UNTIL 27 NOV 23:59 2013. CREATED: 19 SEP 09:04 2013

A0887/13

DUE TO TRAINING FLT OF UNMANNED ACFT

ALL FLIGHTS PROHIBITED WI AREA OF COORD:

420630N 0245640E-421224N 0245713E-421256N 0251336E-

420538N 0250200E-420630N 0245640E.

INFORMATION CONCERNING ACTIVATION/DEACTIVATION

OF THE AREA DURING PLANNED HOURS OF ACTIVITY WILL

BE OBTAINED FROM ATC.

CTR PLOVDIV AFFECTED. GND - 2100M AMSL, 02-05 09-13 16-20 23-27 30 0500-0900

1000-1500, 02 SEP 05:00 2013 UNTIL 30 SEP 15:00 2013. CREATED: 09 AUG 12:19 2013

ALTERNATE: LGTS/SKG (THESSALONIKI/MAKEDONIA, GREECE)

A1485/13

THESSALONIKI/MAKEDONIA/INTL:LIGHTS OF SIGNIFICANT LIGHTED

OBSTACLES IN THE VCY OF MAKEDONIA AP (AS LISTED IN ITEM 40 AND 41 OF

AIP GREECE AD 2 LGTS 2.23.3 AND ON TERMINAL AREA CHART-VFR ROUTES

MAKEDONIA TMA) 3KM WEST OF THE AP U/S (RADIO BROADCASTING AERIALS AT

PERAIA). 31 AUG 08:41 2013 UNTIL 31 DEC 23:59 2013. CREATED: 31 AUG 08:42 2013

A1484/13

LGTS AVGAS 100LL NOT AVAILABLE. 31 AUG 07:30 2013 UNTIL 31 DEC 23:59 2013.

CREATED:

31 AUG 08:40 2013

A1329/13

LGTS:PART OF RWY 16/34 BETWEEN 1800 METERS AND 1950 METERS FROM

THRESHOLD OF RWY 16 MAY BE SLIPPERY WHEN WET. 05 AUG 09:20 2013 UNTIL 31 DEC

07:30 2013. CREATED: 05 AUG 09:45 2013

A1177/13

REF AIP GREECE AD.2-LGTS-SID-1 ON SECOND PAGE OF AD2-LGTS-SID-1

SECTION GENERAL PARAGRAPH 3,AMEND TO READ PDG (PROCEDURE DESING

GRADIENT) 7.6 PER CENT(462FT/NM) INSTEAD OF 6.0 PER CENT (365FT/NM). 10 JUL

07:31 2013 UNTIL PERM. CREATED: 10 JUL 07:39 2013

A1116/13

OAL0958 LGAV-LGKV (27 Sep 1725 UTC)

TWY LINK J AND PART OF TWY F FROM HOLDING POINT RWY10 TO TWY A
CLOSED DUE WIP. 01 JUL 18:00 2013 UNTIL 31 DEC 23:59 2013. CREATED: 01 JUL 18:04
2013

A1105/13

LIGHTING OF TWY F PART BETWEEN TWY A TO THE HOLDING POINT OF RWY
28 OPERATES EVERY SECOND LAMP. 29 JUN 08:31 2013 UNTIL 31 DEC 06:30 2013.
CREATED:
29 JUN 08:39 2013

A0755/13

FISKA VOR FSK 116.4MHZ OUT OF SERVICE. 10 MAY 07:33 2013 UNTIL 31 DEC 12:00
2013.
CREATED: 10 MAY 07:38 2013

A0754/13

THESSALONIKI/ MAKEDONIA ILS/DME RWY10 (IMAK) 109.5MHZ/CH32X OUT
OF SERVICE. 10 MAY 07:28 2013 UNTIL 31 DEC 12:00 2013. CREATED: 10 MAY 07:32
2013

A0747/13

REF AIP GREECE,AD2-LGTS-ADC HAND AMEND TO INCLUDE TWO(2) HOT SPOTS
WITH RELATED TEXT AS FOLLOWS:
1.HS1 INTERSECTION OF RWYS:INTERSECTING RWYS WITH NEITHER SIGNAGE
NOR MARKING TO WARN AGAINST ENTRY TO RWY.
2.HS2 INTERSECTION OF TWYS F,E AND L:WIDE OPENING.
WHERE APPLICABLE MAKE SURE OF CORRECT TURN FROM APRON TO TWY F
BEFORE RWY 10/28. 08 MAY 06:00 2013 UNTIL PERM. CREATED: 08 MAY 06:14 2013

A0173/13

RWY 10/28 AND TLINKS F1 AND F2 CLOSED DUE TO WIP.
PART OF RWY 10/28 FROM TLINK N TO TWY A IS AVAILABLE ONLY FOR A/C
TAXIING. 01 FEB 15:34 2013 UNTIL 30 SEP 12:30 2013. CREATED: 01 FEB 15:35 2013

A1584/12

CAUTION ADVISED ON TWY A DUE TO PAVEMENT DEFORMATION LYING
APPROXIMATELY 160M FROM HOLDING POINT OF RWY 34,EAST OF THE TWY
CENTERLINE. 09 OCT 08:00 2012 UNTIL 30 SEP 12:00 2013. CREATED: 09 OCT 08:59
2012

A1582/08

THE USE OF THE FOLLOWING SIDS IS SUSPENDED:
1.ALIKO 1B (REF AIP GREECE VOLII PAGE LGTS 15, 08 JUL 2004/3)
2.ALIKO 1A (REF AIP GREECE VOLII PAGE LGTS 17, 08 JUL 2004/3)
3.ALIKO 1C (REF AIP GREECE VOLII PAGE LGTS 18, 08 JUL 2004/3)
4.ALIKO 1E (REF AIP GREECE VOLII PAGE LGTS 20, 08 JUL 2004/3. 07 AUG 09:28 2008
UNTIL PERM. CREATED: 07 AUG 07:38 2008

A1581/08

THE USE OF THE FOLLOWING STARS IS SUSPENDED:
1.FSK 1F, ODIKO 1L (REF AIP GREECE VOLII PAGE LGTS 10, 08 JUL
2004/3)2.FSK 1F, ODIKO 1F (REF AIP GREECE VOLII PAGE LGTS 11, 08 JUL
2004/3)
3.FSK 3P, ODIKO 1P (REF AIP GREECE VOLII PAGE LGTS 12, 08 JUL
2004/3)4.FSK 3H, ODIKO 1H (REF AIP GREECE VOLII PAGE LGTS 13, 08 JUL
2004/3)
5.FSK 3D, ODIKO 1D (REF AIP GREECE VOLII PAGE LGTS 14, 08 JUL 2004/3. 07 AUG
09:26 2008 UNTIL PERM. CREATED: 07 AUG 07:37 2008

M0256/13

REF MAIP GREECE VOL-2B EFF 01 JUN 2013 THE USE OF THE FOLLOWING

OAL0958 LGAV-LGKV (27 Sep 1725 UTC)

SIDS IS SUSPENDED:

- 1.ALIKO 1C ON PAGE T-2-18
- 2.ALIKO 1B ON PAGE T-2-21
- 3.ALIKO 1E ON PAGE T-2-25
- 4.ALIKO 1A ON PAGE T-2-27. 04 JUN 08:00 2013 UNTIL PERM. CREATED: 04 JUN 08:42 2013

M0633/12

REF MAIP GREECE VOL-2B EFF 01 DEC 2012 THE USE OF THE FOLLOWING STARS IS SUSPENDED:

- 1.FSK 3D,ODIKO 1D ON PAGE T-2-2
- 2.FSK 1F,ODIKO 1F ON PAGE T-2-3
- 3.FSK 1F,ODIKO 1L ON PAGE T-2-4
- 4.FSK 3H,ODIKO 1H ON PAGE T-2-5
- 5.FSK 3P,ODIKO 1P ON PAGE T-2-6. 05 DEC 06:24 2012 UNTIL PERM. CREATED: 05 DEC 07:08 2012

ALTERNATE: LGLM/LXS (LIMNOS/IFAISTOS, GREECE)

B0819/13

NORTH INT RWY 22L CLSD DUE TO WIP. 25 SEP 08:33 2013 UNTIL 04 OCT 12:00 2013. CREATED: 25 SEP 08:37 2013

B0783/13

LIMNOS/IFAISTOS AERODROME HOURS OF SERVICE AS FOLLOWS:

FROM 13/09/2013 TILL 26/10/2013

MON	0500-0630	0730-0900	1730-1900
TUE	0330-0530	0830-1000	1730-1900
WED	0430-0530	0830-1000	1600-1900
THU	0330-0430	1000-1330	1730-1900
FRI	0500-0630	0800-1100	1730-1900
SAT	0330-0500	0900-1100	1600-1730
SUN	0500-0830	1400-1600	1730-1900

NOTES:

- 1.ON 13/09 FRI 0430-0530 0815-1000 1745-1930
- 2.ON 14/09 SAT 0330-0430 0810-1400 1600-1730
- 3.ON 15/09 SUN 0430-0800 1115-1500 1745-1930
- 4.ON 16/09,30/09 MON 0500-0630 0730-0900 1730-1930
- 5.ON 21/09,28/09 SAT 0330-0500 0900-1400 1600-1730
- 6.ON 22/09 SUN 0500-0830 1100-1600 1730-1900
- 7.ON 26/09 THU 0330-0430 1000-1330 1730-1930
- 8.ON 19/10 SAT 0330-0640 1600-1730
- 9.ON 26/10 SAT 0330-0500 1600-1730. 13 SEP 07:06 2013 UNTIL 26 OCT 23:59 2013. CREATED: 13 SEP 07:09 2013

B0760/13

MIL TELEX (297140) U/S. 03 SEP 18:34 2013 UNTIL 03 DEC 21:00 2013. CREATED: 03 SEP 18:38 2013

B0759/13

FREQ HF 5637 KHZ AND HF 2989 KHZ U/S. 03 SEP 18:16 2013 UNTIL 03 DEC 18:00 2013. CREATED: 03 SEP 18:28 2013

B0638/13

LIMNOS/IFAISTOS: ALS RWY 04 U/S. 24 JUL 06:26 2013 UNTIL 24 OCT 04:20 2013. CREATED:

OAL0958 LGAV-LGKV (27 Sep 1725 UTC)

24 JUL 06:30 2013

B0150/08

REF AIP GREECE VOLII:

1.PAGES LGLM3/ 05 SEP 2002/11 AND LGLM4/ 31 OCT 2002/13 ARE
WITHDRAWN.

2.LIO NDB MUST NOT BE USED FOR LGLM SIDS AND STARS. 07 MAR 12:13 2008 UNTIL
PERM. CREATED: 07 MAR 11:25 2008

M0351/13

LIMNOS TACAN (LMN) CH 95X OPERATIONAL WITH THE BELOW RESTRICTION:

LIMNOS TACAN UNSERVICEABLE AT SECTORS BTN RADIALS 080-060 C.C.W. 16 AUG 05:52
2013 UNTIL 16 NOV 12:00 2013. CREATED: 16 AUG 05:54 2013

WIND PROGNOSIS
FL230
27 Sep 2013 17:26 UTC
OAL0958 LGAV-LGKV
Generated by PFPX. Non-commercial use only.

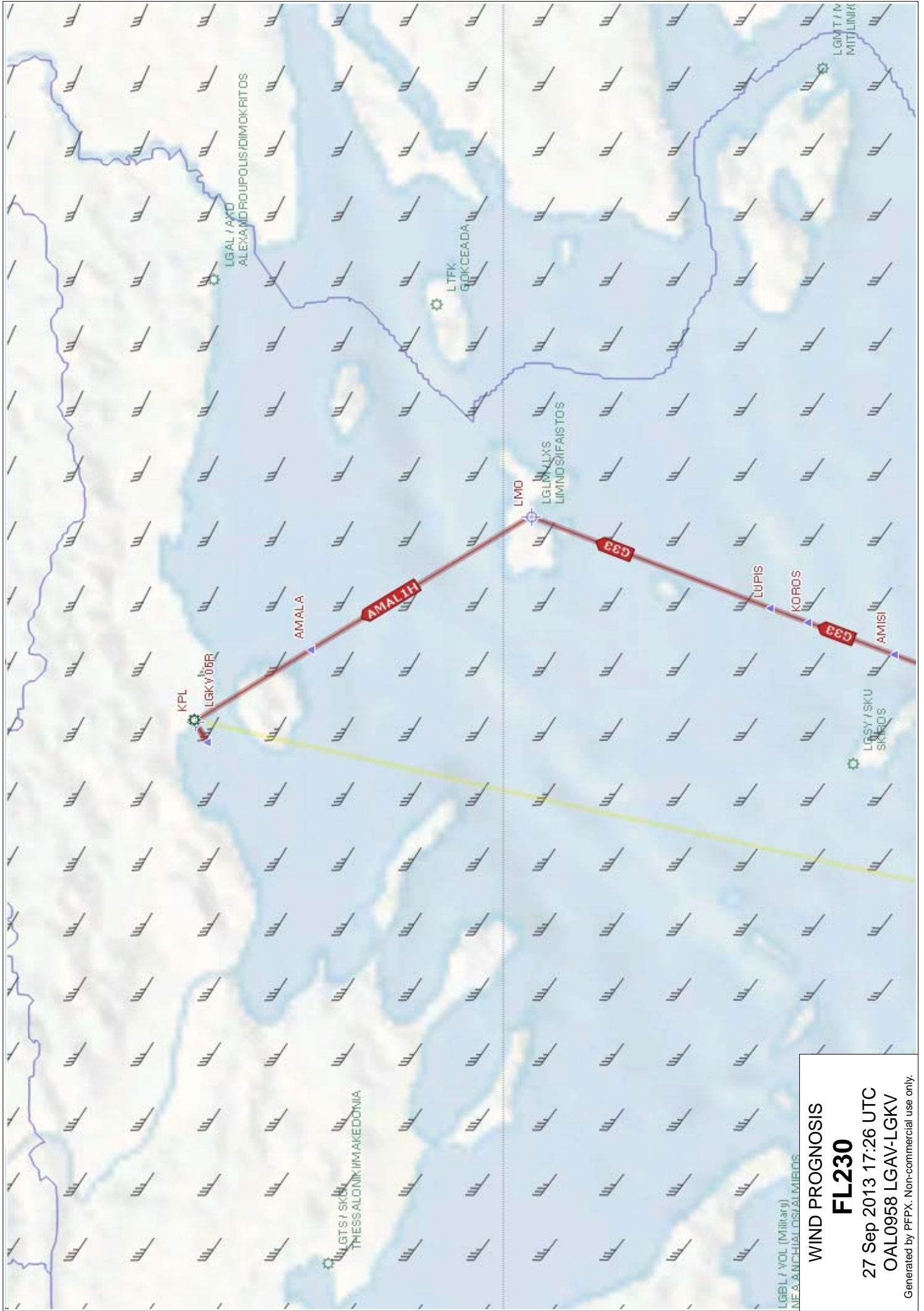


WIND PROGNOSIS
FL250
27 Sep 2013 17:26 UTC
OAL0958 LGAV-LGKV
Generated by PFPX. Non-commercial use only.

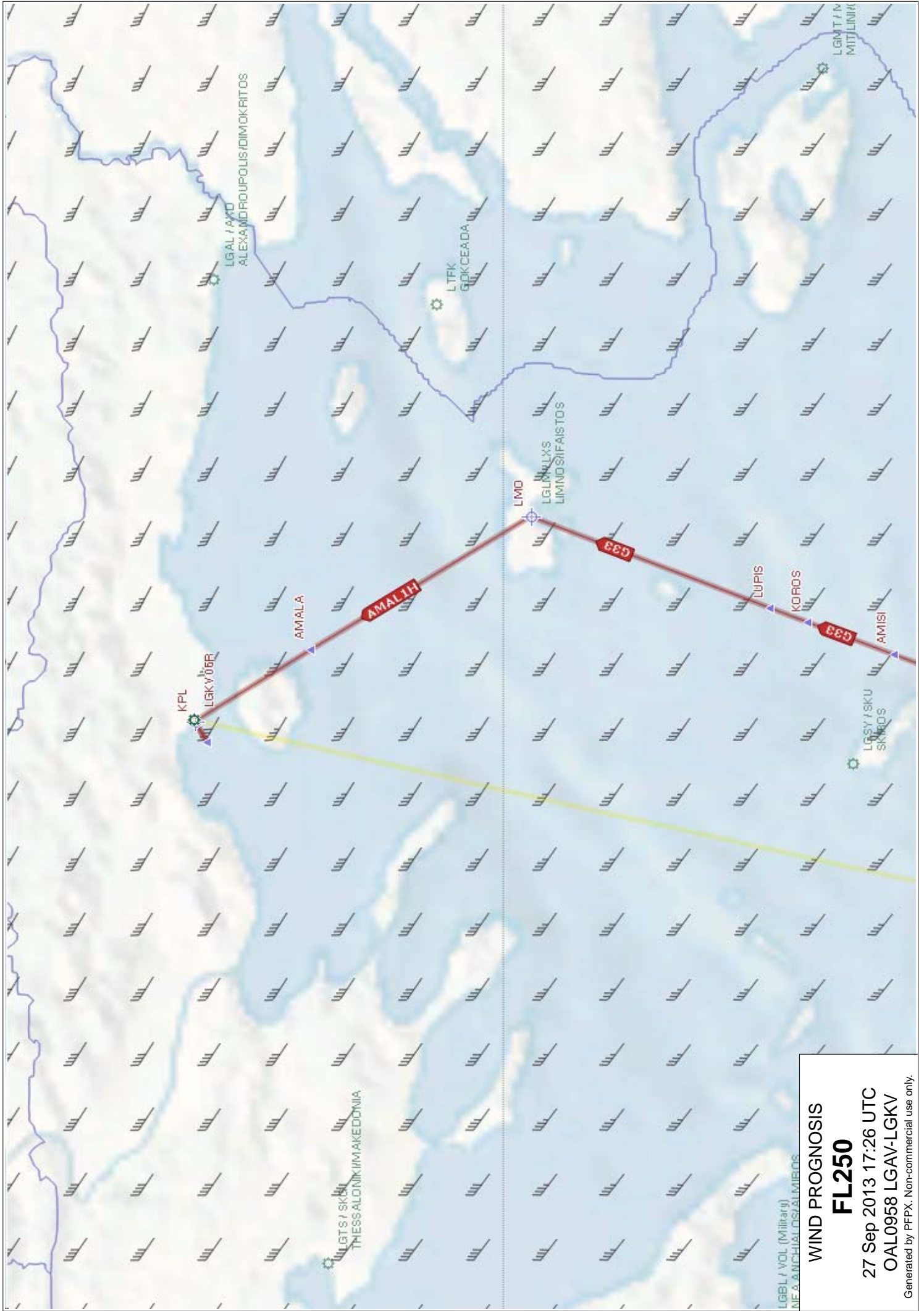


WIND PROGNOSIS
FL270
27 Sep 2013 17:26 UTC
OAL0958 LGAV-LGKV
Generated by PFPX. Non-commercial use only.

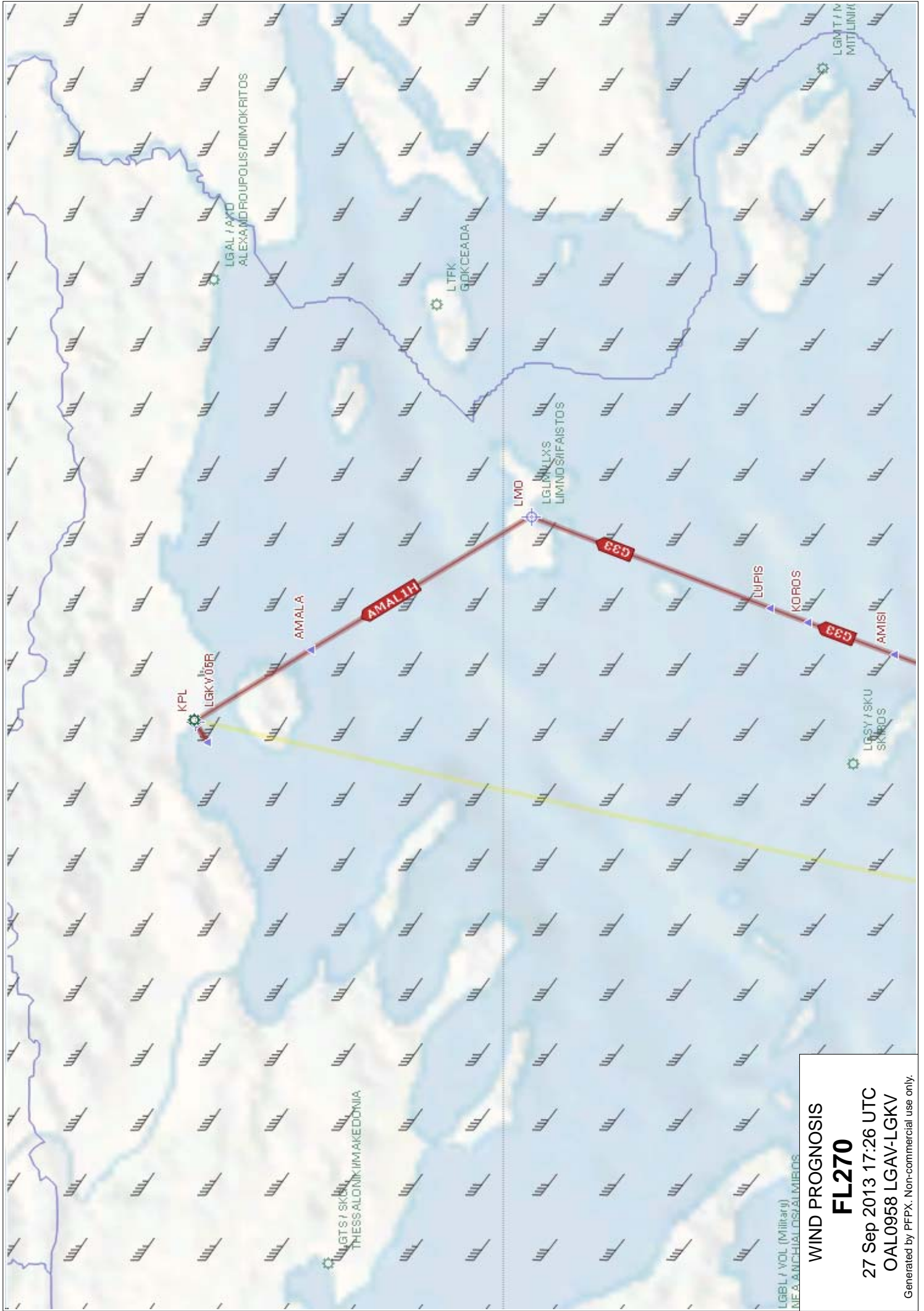




WIND PROGNOSIS
FL230
 27 Sep 2013 17:26 UTC
 OAL0958 LGAV-LGKV
 Generated by PFPX. Non-commercial use only.



WIND PROGNOSIS
FL250
 27 Sep 2013 17:26 UTC
 OAL0958 LGAV-LGKV
 Generated by PFPX. Non-commercial use only.



WIND PROGNOSIS
FL270
 27 Sep 2013 17:26 UTC
 OAL0958 LGAV-LGKV
 Generated by PFPX. Non-commercial use only.

PGDE14 EGRR 261800

ISSUED BY WAFC LONDON
PROVIDED BY WAFC LONDON
FIXED TIME PROGNOSTIC CHART
ICAO AREA EURO SIGWX
FL 100-450
VALID 18 UTC 27 SEP 2013

CB IMPLIES TS, GR
MOD OR SEV TURB AND ICE

UNITS USED: HEIGHTS IN FLIGHT LEVELS
CHECK SIGMET, ADVISORIES FOR
TC AND VA, AND ASHTAM AND
NOTAM FOR VA

CAT AREAS

1 420
290

