



## **Flight Briefing Package**

**OAL0959 LGKV-LGAV**

**27 Sep 1855 UTC**

OFP #0

KAVALA/MEGAS ALEXANDROS  
(GREECE)

-

ATHENS/ELEFThERIOS VENIZELOS  
(GREECE)

PREPARED BY MICHAIL IONAS

OPS@OAV.GR

27 SEP 1732 UTC

# OAL0959 LGKV-LGAV (27 Sep 1855 UTC)

RELEASE DETAILS SX-OAJ LGKV-LGAV RELEASE # 1

---

FUEL PLANNING (KG)		LGKV - LGAV	
TRIP		2,130	00:42
CONT 5%		184	00:05
ALTN	LGSR	1,302	00:28
FINAL RESV		1,105	00:30
MIN T/O		4,721	01:45
TAXI		120	00:10
RELEASE	LGKV	4,841	01:55
REMAINING	LGAV	2,531	00:58

LOAD PLANNING (KG)		PLANNED	LIMIT
PAYLOAD		15,799	
FUEL		4,841	20,820
ZERO FUEL WEIGHT	LIMIT	58,790	61,689
RAMP WEIGHT		63,631	79,100
TAKE-OFF WEIGHT		63,511	78,900
LANDING WEIGHT		61,381	66,360
UNDERLOAD		2,899	LIM ZFW

OAL0959 LGKV-LGAV (27 Sep 1855 UTC)

OLYMPIC AIR VIRTUAL FLIGHTPLAN - IFR OAL0959 SX-OAJ LGKV-LGAV

ALL WEIGHTS IN KILOGRAMS (KG)

STD 27SEP/1855Z

PREPARED 27SEP/1732Z BY MICHAEL IONAS OPS@OAV.GR

\*\*\*\*\*
COMMANDER: SAKIS GALANIS / PARK LGKV: 2 / PARK LGAV: TBA
CONTACT DISPATCH CONTROL 131.950 15MIN BEFORE ARRIVAL (AVAILABLE 1730Z-2200Z)
IF NOT AVAILABLE CONTACT OC/DISPATCH - OAV TEAMSPEAK (AVAILABLE 24H)
\*\*\*\*\*

OAL0959 OFP 1 SX-OAJ/B737-8ERW CF SEL/ELAD ROUTE: LGKVLGAV01
DEP: LGKV/KVA 05R ELEV 18 FT CRZ SPD: M.78 TTL G/C DIST: 182 NM
ARR: LGAV/ATH 03L ELEV 308 FT INIT ALT: FL240 TTL F/P DIST: 249 NM
BURN ADJ: 103.0% TTL AIR DIST: 245 NM
AVG WIND CMP: TL007 KT
ALT: LGSR/JTR 34R ELEV 123 FT 140 NM

Table with columns: CONFIG, DOW, PAX, CARGO, TOTAL, ULOAD LIM, ZFW, TOW, LDW. Rows include STANDARD, MAX, PLN, ACT configurations.

\*\* TAKE-OFF DATA LGKV 05R \*\*

COND: 63511 KG - RWY DRY @ +23°C Q1013 070/09 // LMT: CLIMB
CONFIG: FLAPS 1 - D-T02 +43C
A/I OFF - A/C ON

SPEEDS: V1/145 - VR/146 - V2/149

ENG OUT: NONE

\*\* LANDING DATA LGAV 03L \*\*

COND: 61381 KG - RWY DRY @ +23°C Q1013 110/05 // LMT: STRUCT
CONFIG: FLAPS 30
A/I OFF - A/C ON

SPEEDS: VREF/144 - VAPP/149

ENG OUT: AT 8.5 DME 'SAT' 109.6 RT TO ITCPT AND PRCD ON R 340 INBD 'KEA' 115.0
. AT 15 DME 'KEA' 115.0 ENTER HLDG (160 INBD,LT)

Table with columns: FUEL, CORR, ENDUR. Rows include TRIP, CONT 5%, ALTN LGSR, FINAL RESV, MIN T/O, EXTRA, TAXI, RELEASE. Includes CAPTAINS SIGNATURE and I ACCEPT THIS OFP AND I AM FAMILIAR WITH THE PLANNED ROUTE AND AERODROMES.

FUEL TANK CAP 20820 KG / MAX EXTRA FUEL 4979 KG LIM BY LDW
TRIP CORR FOR 1000 KG TOW INCR: +13 KG / 1000 KG TOW DECR: -13 KG

## OAL0959 LGKV-LGAV (27 Sep 1855 UTC)

2000 FT LOWER: +42 KG / EET 00:42 CLB: 250/280/78 DES: 78/280/250

LGKV/KVA	STD 18:55	ETD 18:55	ACT OFBL .....	EST T/O 19:05	ACT T/O .....
LGAV/ATH	STA 19:55	ETA 19:52	ACT ONBL .....	EST LDG 19:47	ACT LDG .....
			TTL BLCK .....		TTL FLT .....

ATC ROUTE: N0477F240 AMAL1N LMO G33 NEVRA NEVR2C

### ALTERNATE PLANNING

```

-----
ALTN/RWY  DIST  ALT/FL  COMP  TIME   FUEL   DIFF  ROUTE
LGSR/34R  140  FL230  TL014 00:28  1302   -    SORE1K SOREV A10 MIL MIL1B
LGTS/10   206  FL240  HD016 00:40  1841  +539  NEVR1N NEVRA Z507 OSMOS OSMO1D
-----

```

```

-----
AWY      WAYPOINT  MT   ALT  WND/VEL  TAS  REM  FUEL  REM / USED  LEG  ACC
        NAME           TMP  FREQ   GS  DIST  POSITION          ETO / ATO
-----
                LGKV/05R      18
                KAVALA/MEGAS ALE           249  N4054.4 E02436.3 ...../.....

AMAL1N   KHR      041  *CLB
                KAVALA MEGAS ALE           246  N4056.6 E02438.9 ...../.....

AMAL1N   AMALA    153  *CLB
                *TOC      150  FL240  300/036  477  19    3.7 / 1.2  03  00:10
                -26           505  204  N4017.2 E02501.6 ...../.....

AMAL1N   LMO      150  FL240  301/035  477  24    3.5 / 1.3  02  00:12
                LIMNOS      -26    109.20  506  179  N3955.2 E02514.2 ...../.....

G33      LUPIS    193  FL240  304/036  478  45    3.2 / 1.6  06  00:18
                -25           486  135  N3913.6 E02458.5 ...../.....

G33      KOROS    193  FL240  304/036  478  7     3.2 / 1.7  01  00:19
                -25           487  128  N3906.9 E02455.9 ...../.....

G33      AMISI    193  FL240  305/036  478  16    3.0 / 1.8  02  00:21
                -24           488  112  N3851.8 E02449.1 ...../.....

G33      *TOD     193  FL240  305/036  479  29    2.8 / 2.0  03  00:24
                -24           489  83   N3823.8 E02438.4 ...../.....

G33      NEVRA    193  *DES
                13     2.7 / 2.1  05  00:29
                69    N3810.1 E02434.6 ...../.....

NEVR2C   KEA      195  *DES
                115.00  39    2.7 / 2.2  07  00:36
                31    N3733.4 E02418.9 ...../.....

NEVR2C   LGAV/03L 317  308
                ATHENS/ELEFThERI           31    2.6 / 2.3  06  00:42
                N3755.4 E02355.3 ...../.....
-----

```

# OAL0959 LGKV-LGAV (27 Sep 1855 UTC)

WIND INFORMATION - OBS 270600

```
-----  
(CLIMB)                LUPIS                AMISI                (DESCENT)  
FL230  300/034 -23  FL280  305/041 -35  FL280  307/039 -34  FL230  307/032 -22  
FL190  300/025 -15  FL260  305/039 -30  FL260  306/038 -29  FL190  307/026 -12  
FL140  310/018  -6  FL240  304/036 -25  FL240  305/036 -24  FL140  310/018  -4  
 9000  331/012  +4  FL220  304/033 -20  FL220  305/033 -20  9000  321/010  +6  
 4000  015/006 +15  FL200  304/028 -16  FL200  305/029 -16  4000  334/007 +16  
-----
```

END FLIGHTPLAN OAL0959 SX-OAJ LGKV-LGAV 27SEP2013

## OAL0959 LGKV-LGAV (27 Sep 1855 UTC)

(FPL-OAL0959-IS  
-B738/M-SDE1FGHIJ1RWXYZ/LB1  
-LGKV1855  
-N0477F240 LMO G33 NEVRA  
-LGAV0042 LGSR  
-PBN/A1B1C1D1L101S1 NAV/RNVD1E2A1 DOF/130927 REG/SXOAJ SEL/ELAD RVR/75  
OPR/OLYMPIC AIR VIRTUAL  
-E/0145)

**OAL0959 LGKV-LGAV (27 Sep 1855 UTC)**

WEATHER BRIEFING - GENERATED 27 SEP 2013 17:32 UTC

-----  
LGKV LGAV LGSR LGTS

-----  
ORIGIN: LGKV/KVA (KAVALA/MEGAS ALEXANDROS, GREECE)

-----  
LGKV 271650Z 07009KT 9999 SCT025TCU SCT080 BKN180 23/14 Q1013  
LGKV 271400Z 2715/2724 22008KT 9999 FEW018 SCT030  
PROB40 TEMPO 2715/2718 5000 TSRA FEW010 FEW018CB BKN030

-----  
DESTINATION: LGAV/ATH (ATHENS/ELEFThERIOS VENIZELOS, GREECE)

-----  
LGAV 271650Z 11005KT CAVOK 23/16 Q1013 NOSIG RMK QNH 1013.1  
LGAV 271100Z 2712/2812 07010KT 9999 FEW025  
BECMG 2716/2718 VRB03KT  
BECMG 2807/2809 12010KT

-----  
ALTERNATE: LGSR/JTR (SANTORINI, GREECE)

-----  
LGSR 271620Z 28010KT 9999 FEW025 25/17 Q1012 NOSIG  
LGSR 271400Z 2715/2724 27012KT 9999 FEW020

-----  
ALTERNATE: LGTS/SKG (THESSALONIKI/MAKEDONIA, GREECE)

-----  
LGTS 271650Z 16006KT 9999 FEW025 25/10 Q1011 NOSIG RMK FEW180  
LGTS 270500Z 2706/2806 32008KT 9999 FEW030  
BECMG 2712/2714 15012KT 9999 SCT040  
BECMG 2720/2722 VRB03KT 9999 FEW030  
BECMG 2804/2806 14004KT 7000 FEW010 SCT025

OAL0959 LGKV-LGAV (27 Sep 1855 UTC)

NOTAM BRIEFING - GENERATED 27 SEP 2013 17:32 UTC

-----  
LGKV LGAV LGSR LGTS  
-----

ORIGIN: LGKV/KVA (KAVALA/MEGAS ALEXANDROS, GREECE)  
-----

B0531/13

LGKV/MEGAS ALEXANDROS:AERODROME HOURS OF SERVICE AS FLW:  
FROM 20/06/2013 TILL 26/10/2013

MON,TUE,WED,THU,FRI	0330-1715	
SAT	0530-1115	1800-1900
SUN	0545-1230	1600-1715

NOTES:

- 1.ON 21/06 FRI 0330-1800
- 2.ON 22/06 SAT 0530-1900
- 3.ON 23/6 SUN 0545-1715
- 4.FROM 29/6 TILL 03/8 SAT 0530-1115 1630-1900
- 5.FROM 10/8 TILL 24/8 SAT 0530-1115 1500-1900. 18 JUN 07:20 2013 UNTIL 26 OCT 23:59 2013. CREATED: 18 JUN 07:23 2013

B0453/13

MIL FLTS FOR FIRE FIGHTING PURPOSE WILL TAKE PLACE WITHIN AREA 5NM  
RAD 405450N0243711E. KAVALA/MEGAS ALEXANDROS TMA/CTR/ATZ AFFECTED.  
ALL ACFT SHALL FILE FPLS AND CONTACT APPROPRIATE ATS UNIT. 00000FT AMSL -  
03000FT  
AMSL, DAILY SR-SS, 14 JUN 03:05 2013 UNTIL 31 OCT 14:25 2013. CREATED: 29 MAY  
11:52 2013

B0385/13

CONCENTRATION OF BIRDS (INCLUDING GULLS,STORKS,FALCONS,SWALLOWS,BEE  
EATERS,ROOKS,CROWS,SWIFTS) IN THE AIRPORT VICINITY.  
CAUTION ADVISED. 08 MAY 14:39 2013 UNTIL 15 OCT 20:59 2013. CREATED: 08 MAY  
14:40 2013

B0251/13

ALL GENERAL AVIATION AND TRAINING FLIGHTS MUST REQUEST PRIOR  
APPROVAL FROM KAVALA AIRPORT AUTHORITIES AT LEAST 24 HOURS BEFORE  
THE ESTIMATED TIME OF ARRIVAL TO LGKV DUE TO INCREASED AIR TRAFFIC  
WORKLOAD. PRIOR COORDINATION WITH AIRPORT AUTHORITIES ON TEL  
+302591053404 OR BY E-MAIL:D18IC AT HCAA.GR. 01 APR 05:17 2013 UNTIL 26 OCT  
21:00 2013. CREATED: 01 APR 05:21 2013

M0394/13

ARRESTING GEAR (HOOK) RWY 05R CONNECTED 1709FT FROM THRESHOLD RWY  
05R EVERY DAY EXCEPT WEEKENDS AND HOLIDAYS. WEEKEND BEGINS FRI 11:30  
TILL MON 04:00 UTC. FOR ANY EXCEPTION PRIOR NOTICE IS REQUIRED.  
ARRESTING GEAR (HOOK) RWY 23L UNSERVICEABLE UNTIL FURTHER NOTICE. 19 SEP 09:27  
2013 UNTIL 26 OCT 21:59 2013. CREATED: 19 SEP 10:10 2013

M0280/13

KAVALA/MEGAS ALEXANDROS TACAN KRP CH90X OPERATIONAL BUT WITHOUT  
BACKUP STATION. 28 JUN 05:58 2013 UNTIL 31 DEC 23:59 2013. CREATED: 28 JUN 06:06  
2013

M0161/11

LGKV ARRESTING BARRIERS (NETS) OF RWYS 23R AND 05R COMPLETELY  
WITHDRAWN.



**OAL0959 LGKV-LGAV (27 Sep 1855 UTC)**

REF AIP AGA 2-6-4 KAI 2-6-5, MAIP SUPPLEMENT VOL-1 PAGE K-4-1  
MAIP VOL-2 PAGE K-5-1 MAIP VOL-3 PAGE D-37.-. 04 APR 11:55 2011 UNTIL PERM.  
CREATED: 04 APR 12:01 2011

-----  
DESTINATION: LGAV/ATH (ATHENS/ELEFThERIOS VENIZELOS, GREECE)  
-----

A1641/13

KEA VOR 'KEA' 115.00MHZ ON TEST DO NOT USE. KEA DME CH97X (ID:KEA)  
NORMALLY OPERATING. 23 SEP 09:27 2013 UNTIL 30 SEP 11:30 2013. CREATED: 23 SEP  
09:30 2013

A1640/13

CONCENTRATION OF BIRDS INCLUDING  
FALCONS,BUZZARDS,STARLINGS,SWALLOWS AND OTHER SMALL PASSERINES IN  
THE VICINITY OF THE AIRPORT.  
CAUTION ADVISED. 01 OCT 00:01 2013 UNTIL 30 NOV 23:59 2013. CREATED: 23 SEP  
08:32 2013

A1307/13

REF AIP GREECE AIRAC AMDT 8-13(WEF 22 AUG 2013) AD2-LGAV-4,  
SECTION 2.12,COL 5 LINE 4,  
AMEND TO READ RWY21R END COORDINATES AS FOLLOWS:  
375517,46N0235507,99E. 22 AUG 00:01 2013 UNTIL PERM. CREATED: 31 JUL 08:47 2013

A1287/13

CONCENTRATION OF BIRDS INCLUDING FALCONS,DOVES,STORKS,  
SWALLOWS AND SWIFTS IN THE VICINITY OF THE AIRPORT.  
CAUTION ADVISED. 01 AUG 00:00 2013 UNTIL 30 SEP 23:59 2013. CREATED: 29 JUL  
09:35 2013

A1243/13

ALL GENERAL AVIATION FLIGHTS WITH MTOW MORE THAN 5700 KG SHALL  
SEND A SCHEDULE MOVEMENT ADVICE (SMA) MESSAGE TO THE AIRPORT  
SCHEDULE FACILITATOR IN A TURNAROUND FORMAT ACCORDING TO IATA  
STANDARD SCHEDULE INFORMATION MANUAL CHAPTER 6.10.  
SMA SHALL BE SENT DURING WORKING HOURS 0830-1600 LOCAL TIME VIA  
SITA FAX OR E-MAIL WITH COPIES TO SCHEDULING AND PLANNING DEPT AND  
TO AIRPORT SERVICES OPERATION CENTER (ASOC).  
CANCELLATION MESSAGES SHALL BE SENT AS SOON AS FLIGHTS WILL NOT  
OPERATE.  
ABOVE PROCEDURE DOES NOT APPLY TO HELICOPTERS VIP MEDICAL AND SAR  
FLIGHTS.  
FOR GENERAL AVIATION FLIGHTS WITH MTOW LESS THAN 5700 KG AIP GREECE  
AD2 2.20.1.2 APPLIES.  
CONTACT DETAILS :  
SCHEDULE FACILITATOR SITA:ATHHAXH,  
TEL:21035361189/190/811/813/815/816, FAX:2103537418  
E-MAIL : ESAGOS-HSCA(AT)ATHENSAIRPORT.GR  
LGAV ASOC SITA: ATHIAXH, TEL: 2103540000, FAX: 2103540095  
E-MAIL: ASOC-SENIOR-SRV(AT)AIA.GR  
LGAV SCHEDULING AND PLANNING DEPT SITA: ATHSCXH, TEL: 2103531425,  
FAX: 2103532254, E-MAIL: SCHED-PLANNING (AT) AIA.GR. 23 JUL 09:36 2013 UNTIL  
30 SEP 23:59 2013. CREATED: 23 JUL 09:39 2013

A1190/13

OBSTACLE LIGHTS ON BOYATI ATHINAI ERT RADIO MAST OUT OF SERVICE.  
OBST COORDINATES (NOT IN WGS 84) 380904N0235138E. REF AIP-GREECE ENR  
5.4-2. AND ENR 1.1.7.6. 14 JUL 12:00 2013 UNTIL 31 DEC 23:59 2013. CREATED:  
14 JUL 11:37 2013

## OAL0959 LGKV-LGAV (27 Sep 1855 UTC)

A1020/13

REF. AIP GREECE AD2-LGAV-9 PARAGR 2.20.2.1-J 20 SEP 2012  
ADD B 747-800 TO EXISTING A/C TYPES. 14 JUN 05:27 2013 UNTIL PERM. CREATED:  
14 JUN 05:33 2013

A1018/13

REF AIP GREECE AD-2-LGAV-STAR-3 28 JUN 2012, IN THE HOLDING  
PATTERN AT KRO VOR/DME, ON THE SEGMENT NEVRA-KRO VOR/DME, ON THE  
SEGMENT KEPIR-KRO VOR/DME AND ON THE SEGMENT VARIX-KRO VOR/DME,  
AMEND TO READ 7000FT INSTEAD OF 6000FT. 14 JUN 05:21 2013 UNTIL PERM. CREATED:  
14 JUN 05:25 2013

A1016/13

REF AIP GREECE, THE PROCEDURES DESCRIBED IN THE FOLLOWING PAGES  
ARE SUSPENDED.

1. AD2-LGAV-SID-2 28 JUN 2012
2. AD2-LGAV-SID-7 28 JUN 2012
3. AD2-LGAV-SID-10 28 JUN 2012
4. AD2-LGAV-SID-12 28 JUN 2012
5. AD2-LGAV-STAR-2 28 JUN 2012. 14 JUN 05:08 2013 UNTIL PERM. CREATED: 14 JUN  
05:17 2013

A0997/13

LGAV/EL VENIZELOS/INTL:AT AREA BEYOND 10NM AND ALTITUDE BELOW  
4000FT FOR ANGLES GREATER THAN 18 DEGREES FROM THE LOCALIZER CENTER  
LINE THE ILS RWY 03R (I-ATR) IS OUT OF USE DUE TO FALSE CAPTURE. 12 JUN 07:59  
2013 UNTIL PERM. CREATED: 12 JUN 08:45 2013

A0893/13

REFERENCE AIP GREECE AD2-LGAV-SID-1 28JUN 2012 ON THE DESCRIPTIONS  
OF SIDS RWY 03R:

- 1)AT THE END OF EACH DESCRIPTION OF THE SIDS  
NEVRA1J,KEPIR1J,VARIX1J,KEA1J,GENDO1J,SOREV2J,VELOP2J,ASTOV2J,NEMES3  
J,RILIN2J,PIKAD2J,RIMAX1J,ABLON2J, DELETE:SEE NOTE 1.
- 2)AT THE END OF THE DESCRIPTION OF BIBEX1J, HAND AMEND TO READ:SEE  
NOTE, INSTEAD OF:SEE NOTE 1 AND 2.
- 3)AT THE END OF DESCRIPTIONS OF SIDS RWY 03R:  
A. DELETE NOTE 1:DO NOT CLIMB ABOVE 4000FT(QNH)UNTIL REACHING  
14DME/KRO,UNLESS CLEARED BY ATC.  
B. HAND AMEND TO READ NOTE:THIS SID SHOULD BE USED FOR DESTINATION  
PAROS AIRPORT(LGPA),INSTEAD OF:NOTE 2:THIS SID SHOULD BE USED FOR  
DESTINATION PAROS AIRPORT(LGPA).
- 4.AT EACH DESCRIPTIOPN OF THE SIDS KEA1J,  
BIBEX1J,GENDO1J,SOREV2J,VELOP2J,ASTOV2J,NEMES3J,RILIN2J,PIKAD2J,  
RIMAX1J,ABLON2J, HAND AMEND TO READ:CLIMB ON RADIAL 048 SAT TO  
1100FT(QNH).AT 1100FT(QNH)TURN RIGHT,INTERCEPT AND FOLLOW RADIAL 266  
KRO TO RADIAL 266 KRO/14DME FIX NOT ABOVE 4000FT(QNH) UNLESS  
OTHERWISE INSTRUCTED BY ATC,INSTEAD OF: CLIMB ON RADIAL 048 SAT  
TO1100FT(QNH).AT 1100FT(QNH) TURN RIGHT, INTERCEPT AND FOLLOW RADIAL  
266 KRO CLIMBING TO 4000FT(QNH).MAINTAIN 4000FT(QNH) UNTIL PASSING  
14DME KRO. 27 MAY 09:48 2013 UNTIL PERM. CREATED: 27 MAY 09:53 2013

A0716/13

REFERENCE AIP GREECE AD2-LGAV:

- 1)ON AD2-LGAV-SID-1 CANCEL THE SID NEMES 3J 2)ON AD2-LGAV-SID-4  
CANCEL THE SID'S NEMES 1T AND GERMI 1T 3)ON THE AD2-LGAV-SID-5  
CANCEL THE SID NEMES 3L 4)ON THE AD2-LGAV-SID-9 CANCEL THE SID NEMES  
3G
- 5)ON THE AD2-LGAV-SID-11 CANCEL THE SID NEMES 3F. 29 APR 07:33 2013 UNTIL PERM.  
CREATED: 29 APR 07:35 2013

## OAL0959 LGKV-LGAV (27 Sep 1855 UTC)

A0518/13

REF AIP GREECE PART 3 AD2-LGAV-2.21.1.3 RUNWAY USE SYSTEM  
ADDITIONAL HOURS OF LGAV - NOISE ABATMENT PROCEDURES AS FOLLOW :  
31 MAR TILL 27 OCT 2013 DAILY 12:00-15:00. 31 MAR 02:00 2013 UNTIL 27 OCT 02:00  
2013. CREATED: 29 MAR 04:55 2013

A0103/12

ELEFATHERIOS VENIZELOS AIRPORT HAS BEEN APPROVED BY HCAA TO BE USED  
BY B747-800 AIRCRAFT AS ALTERNATE OR FOR A LIMITED NUMBER OF FLIGHTS.  
THE EXISTING ILS PROCEDURES HAVE BEEN DESIGNED TAKING INTO  
CONSIDERATION THE COLLISION RISK MODEL. 24 JAN 08:19 2012 UNTIL PERM. CREATED:  
24 JAN 08:40 2012

-----  
ALTERNATE: LGSR/JTR (SANTORINI, GREECE)  
-----

B0628/13

RTIL RWY 16L U/S. 21 JUL 15:29 2013 UNTIL 31 DEC 23:59 2013. CREATED: 21 JUL  
15:30 2013

B0599/13

RVR U/S. 05 JUL 08:21 2013 UNTIL 31 DEC 22:00 2013. CREATED: 05 JUL 08:23 2013

B0508/13

BIRD CONCENTRATION (SEAGULLS) IN MOVEMENT AREA. CAUTION ADVISED. 10 JUN 11:22  
2013 UNTIL 31 OCT 23:59 2013. CREATED: 10 JUN 11:24 2013

B0506/13

TRAINING FLIGHTS TO SANTORINI AIRPORT MUST OBTAIN PERMISSION AT  
LEAST THREE HOURS PRIOR ETA. FOR PERMISSION CONTACT SANTORINI  
APP/TWR AT TEL. NUM :+302286028404, OR +302286028448. 11 JUN 03:00 2013 UNTIL  
30 SEP 21:00 2013. CREATED: 10 JUN 06:42 2013

B0437/13

DUE TO LIMITED PARKING POSITIONS ALL GENERAL AVIATION FLIGHTS  
INTENDING TO LAND AT SANTORINI AIRPORT MUST OBTAIN PRIOR PERMISSION  
(PPR) FROM THE AIRPORT AUTHORITY AT LEAST 24HR PRIOR ETA.

THE APPLICATION MUST INCLUDE:

1. AIRCRAFT REGISTRATION, TYPE, MTOW AND CALLSIGN
2. DATE OF ARRIVAL, ETA AND AIRPORT OF ORIGIN
3. DATE OF DEPARTURE, ETD AND DESTINATION AIRPORT
4. HANDLING AGENT
5. COMMUNICATION DETAILS (FAX, E-MAIL)
6. OPERATOR (IF APPLICABLE)

THE APPLICATION MUST BE ADDRESSED TO THE AIRPORT AUTHORITY AND SENT  
BY FAX(++302286033349) OR E-MAIL KASRGAE(AT)HCAA.GR.

THE AIRPORT AUTHORITY MUST ALSO BE NOTIFIED IN IN CASE OF SCHEDULE  
CHANGES OR CANCELATIONS OF PREVIOUSLY AUTHORIZED FLIGHTS. 01 JUN 00:01 2013  
UNTIL 30 SEP 23:59 2013. CREATED: 24 MAY 07:40 2013

B0387/13

LGSR/SANTORINI:AERODROME HOURS OF SERVICE AS FLW:  
FROM 09/05/2013 TILL 26/10/2013

A.FROM 09/05 TILL 28/05

MON,THU,FRI 0230-1800

TUE,WED 0230-1930

SAT 0230-1900

SUN 0230-2230

B.FROM 29/05 TILL 30/09

**OAL0959 LGKV-LGAV (27 Sep 1855 UTC)**

EUERY DAY 0001-2400

C.FROM 01/10 TILL 28/10  
MON,WED,THU,FRI 0230-1800  
TUE 0230-1930  
SAT,SUN 0230-1900

NOTES:

1.ON 10/05 FRI 0700-1800  
2.ON 18/05,25/5,05/10,12/10 SAT 0230-2030. 09 MAY 10:47 2013 UNTIL 26 OCT 23:59 2013. CREATED: 09 MAY 10:51 2013

M0392/13

SANTORINI TACAN SAN CH 111X U/S. 19 SEP 06:32 2013 UNTIL 30 SEP 23:59 2013.  
CREATED:  
19 SEP 06:40 2013

M0388/13

LGSR : NORTH ARRESTING GEAR OF RUNWAY 34R-16L IS REMOVED. 17 SEP 06:59 2013  
UNTIL  
17 DEC 15:00 2013. CREATED: 17 SEP 07:05 2013

M0188/13

HAF SERVICES WILL BE PROVIDED  
A. EVERY DAY DURING DAYLIGHT AND THE REST HOURS OF THE DAY 30 MIN  
PRIOR NOTICE.  
B. WEEKEND AND PUBLISHED HOLIDAYS AFTER 30 MIN PRIOR NOTICE. 23 APR 07:11 2013  
UNTIL 31 DEC 21:59 2013. CREATED: 23 APR 07:30 2013

M0408/08

SINK TYPE ARRESTING GEAR CABLE INSTALLED AND OPERATES AT THE  
BEGINNING OF RWY 34R, DEFINED AS THE SOUTH ARRESTING GEAR OF RWY  
34R/16L. 28 AUG 12:18 2008 UNTIL PERM. CREATED: 28 AUG 12:23 2008

-----  
ALTERNATE: LGTS/SKG (THESSALONIKI/MAKEDONIA, GREECE)  
-----

A1485/13

THESSALONIKI/MAKEDONIA/INTL:LIGHTS OF SIGNIFICANT LIGHTED  
OBSTACLES IN THE VCY OF MAKEDONIA AP (AS LISTED IN ITEM 40 AND 41 OF  
AIP GREECE AD 2 LGTS 2.23.3 AND ON TERMINAL AREA CHART-VFR ROUTES  
MAKEDONIA TMA) 3KM WEST OF THE AP U/S (RADIO BROADCASTING AERIALS AT  
PERAIA). 31 AUG 08:41 2013 UNTIL 31 DEC 23:59 2013. CREATED: 31 AUG 08:42 2013

A1484/13

LGTS AVGAS 100LL NOT AVAILABLE. 31 AUG 07:30 2013 UNTIL 31 DEC 23:59 2013.  
CREATED:  
31 AUG 08:40 2013

A1329/13

LGTS:PART OF RWY 16/34 BETWEEN 1800 METERS AND 1950 METERS FROM  
THRESHOLD OF RWY 16 MAY BE SLIPPERY WHEN WET. 05 AUG 09:20 2013 UNTIL 31 DEC  
07:30 2013. CREATED: 05 AUG 09:45 2013

A1177/13

REF AIP GREECE AD.2-LGTS-SID-1 ON SECOND PAGE OF AD2-LGTS-SID-1  
SECTION GENERAL PARAGRAPH 3,AMEND TO READ PDG (PROCEDURE DESING  
GRADIENT) 7.6 PER CENT(462FT/NM) INSTEAD OF 6.0 PER CENT (365FT/NM). 10 JUL  
07:31 2013 UNTIL PERM. CREATED: 10 JUL 07:39 2013

A1116/13

## OAL0959 LGKV-LGAV (27 Sep 1855 UTC)

TWY LINK J AND PART OF TWY F FROM HOLDING POINT RWY10 TO TWY A  
CLOSED DUE WIP. 01 JUL 18:00 2013 UNTIL 31 DEC 23:59 2013. CREATED: 01 JUL 18:04  
2013

A1105/13

LIGHTING OF TWY F PART BETWEEN TWY A TO THE HOLDING POINT OF RWY  
28 OPERATES EVERY SECOND LAMP. 29 JUN 08:31 2013 UNTIL 31 DEC 06:30 2013.  
CREATED:  
29 JUN 08:39 2013

A0755/13

FISKA VOR FSK 116.4MHZ OUT OF SERVICE. 10 MAY 07:33 2013 UNTIL 31 DEC 12:00  
2013.  
CREATED: 10 MAY 07:38 2013

A0754/13

THESSALONIKI/ MAKEDONIA ILS/DME RWY10 (IMAK) 109.5MHZ/CH32X OUT  
OF SERVICE. 10 MAY 07:28 2013 UNTIL 31 DEC 12:00 2013. CREATED: 10 MAY 07:32  
2013

A0747/13

REF AIP GREECE,AD2-LGTS-ADC HAND AMEND TO INCLUDE TWO(2) HOT SPOTS  
WITH RELATED TEXT AS FOLLOWS:  
1.HS1 INTERSECTION OF RWYS:INTERSECTING RWYS WITH NEITHER SIGNAGE  
NOR MARKING TO WARN AGAINST ENTRY TO RWY.  
2.HS2 INTERSECTION OF TWYS F,E AND L:WIDE OPENING.  
WHERE APPLICABLE MAKE SURE OF CORRECT TURN FROM APRON TO TWY F  
BEFORE RWY 10/28. 08 MAY 06:00 2013 UNTIL PERM. CREATED: 08 MAY 06:14 2013

A0173/13

RWY 10/28 AND TLINKS F1 AND F2 CLOSED DUE TO WIP.  
PART OF RWY 10/28 FROM TLINK N TO TWY A IS AVAILABLE ONLY FOR A/C  
TAXIING. 01 FEB 15:34 2013 UNTIL 30 SEP 12:30 2013. CREATED: 01 FEB 15:35 2013

A1584/12

CAUTION ADVISED ON TWY A DUE TO PAVEMENT DEFORMATION LYING  
APPROXIMATELY 160M FROM HOLDING POINT OF RWY 34,EAST OF THE TWY  
CENTERLINE. 09 OCT 08:00 2012 UNTIL 30 SEP 12:00 2013. CREATED: 09 OCT 08:59  
2012

A1582/08

THE USE OF THE FOLLOWING SIDS IS SUSPENDED:  
1.ALIKO 1B (REF AIP GREECE VOLII PAGE LGTS 15, 08 JUL 2004/3)  
2.ALIKO 1A (REF AIP GREECE VOLII PAGE LGTS 17, 08 JUL 2004/3)  
3.ALIKO 1C (REF AIP GREECE VOLII PAGE LGTS 18, 08 JUL 2004/3)  
4.ALIKO 1E (REF AIP GREECE VOLII PAGE LGTS 20, 08 JUL 2004/3. 07 AUG 09:28 2008  
UNTIL PERM. CREATED: 07 AUG 07:38 2008

A1581/08

THE USE OF THE FOLLOWING STARS IS SUSPENDED:  
1.FSK 1F, ODIKO 1L (REF AIP GREECE VOLII PAGE LGTS 10, 08 JUL  
2004/3)2.FSK 1F, ODIKO 1F (REF AIP GREECE VOLII PAGE LGTS 11, 08 JUL  
2004/3)  
3.FSK 3P, ODIKO 1P (REF AIP GREECE VOLII PAGE LGTS 12, 08 JUL  
2004/3)4.FSK 3H, ODIKO 1H (REF AIP GREECE VOLII PAGE LGTS 13, 08 JUL  
2004/3)  
5.FSK 3D, ODIKO 1D (REF AIP GREECE VOLII PAGE LGTS 14, 08 JUL 2004/3. 07 AUG  
09:26 2008 UNTIL PERM. CREATED: 07 AUG 07:37 2008

M0256/13

REF MAIP GREECE VOL-2B EFF 01 JUN 2013 THE USE OF THE FOLLOWING

## OAL0959 LGKV-LGAV (27 Sep 1855 UTC)

SIDS IS SUSPENDED:

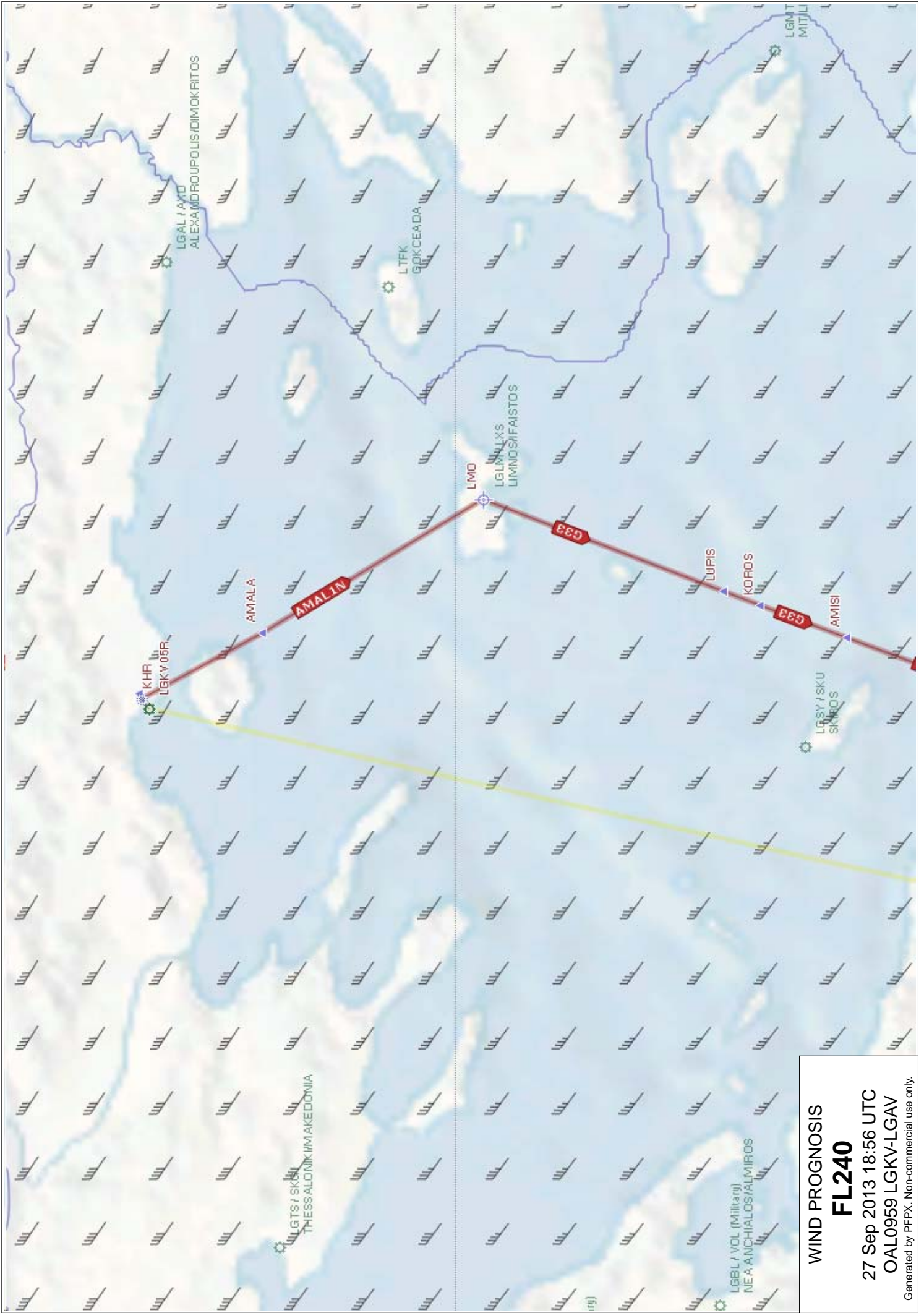
- 1.ALIKO 1C ON PAGE T-2-18
- 2.ALIKO 1B ON PAGE T-2-21
- 3.ALIKO 1E ON PAGE T-2-25
- 4.ALIKO 1A ON PAGE T-2-27. 04 JUN 08:00 2013 UNTIL PERM. CREATED: 04 JUN 08:42 2013

M0633/12

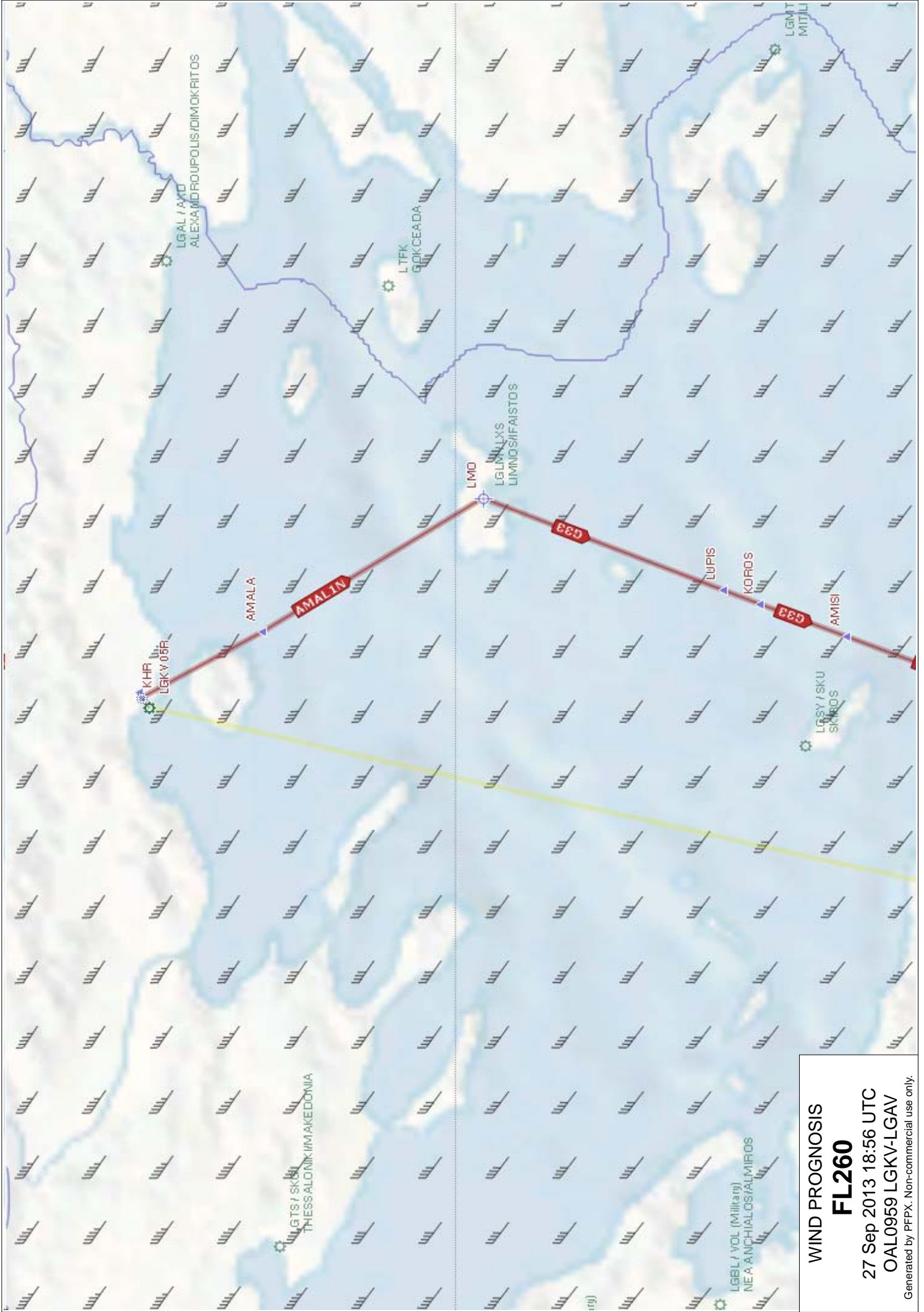
REF MAIP GREECE VOL-2B EFF 01 DEC 2012 THE USE OF THE FOLLOWING

STARS IS SUSPENDED:

- 1.FSK 3D,ODIKO 1D ON PAGE T-2-2
- 2.FSK 1F,ODIKO 1F ON PAGE T-2-3
- 3.FSK 1F,ODIKO 1L ON PAGE T-2-4
- 4.FSK 3H,ODIKO 1H ON PAGE T-2-5
- 5.FSK 3P,ODIKO 1P ON PAGE T-2-6. 05 DEC 06:24 2012 UNTIL PERM. CREATED: 05 DEC 07:08 2012

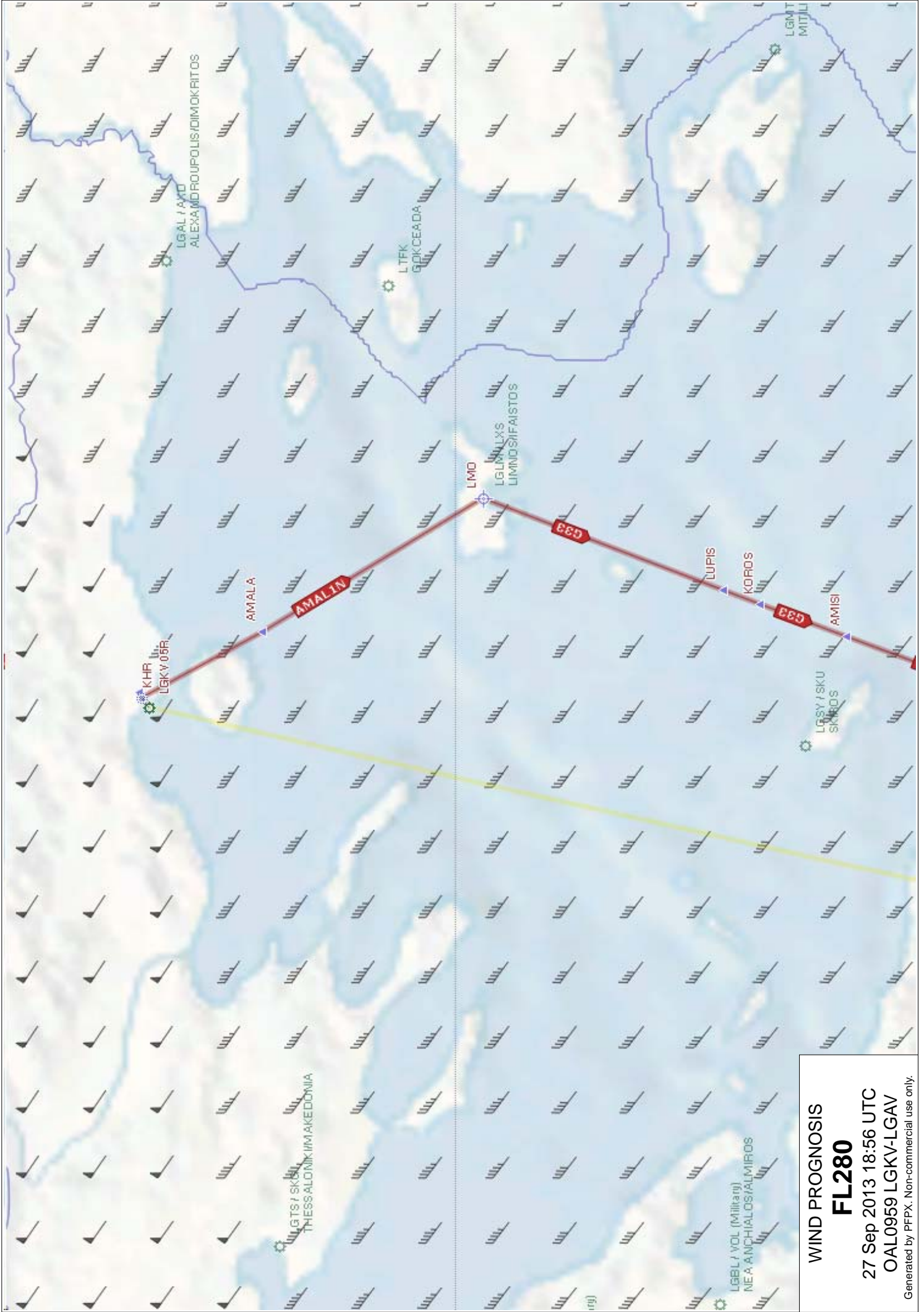


**WIND PROGNOSIS**  
**FL240**  
 27 Sep 2013 18:56 UTC  
 OAL0959 LGKV-LGAV  
 Generated by PFPX. Non-commercial use only.



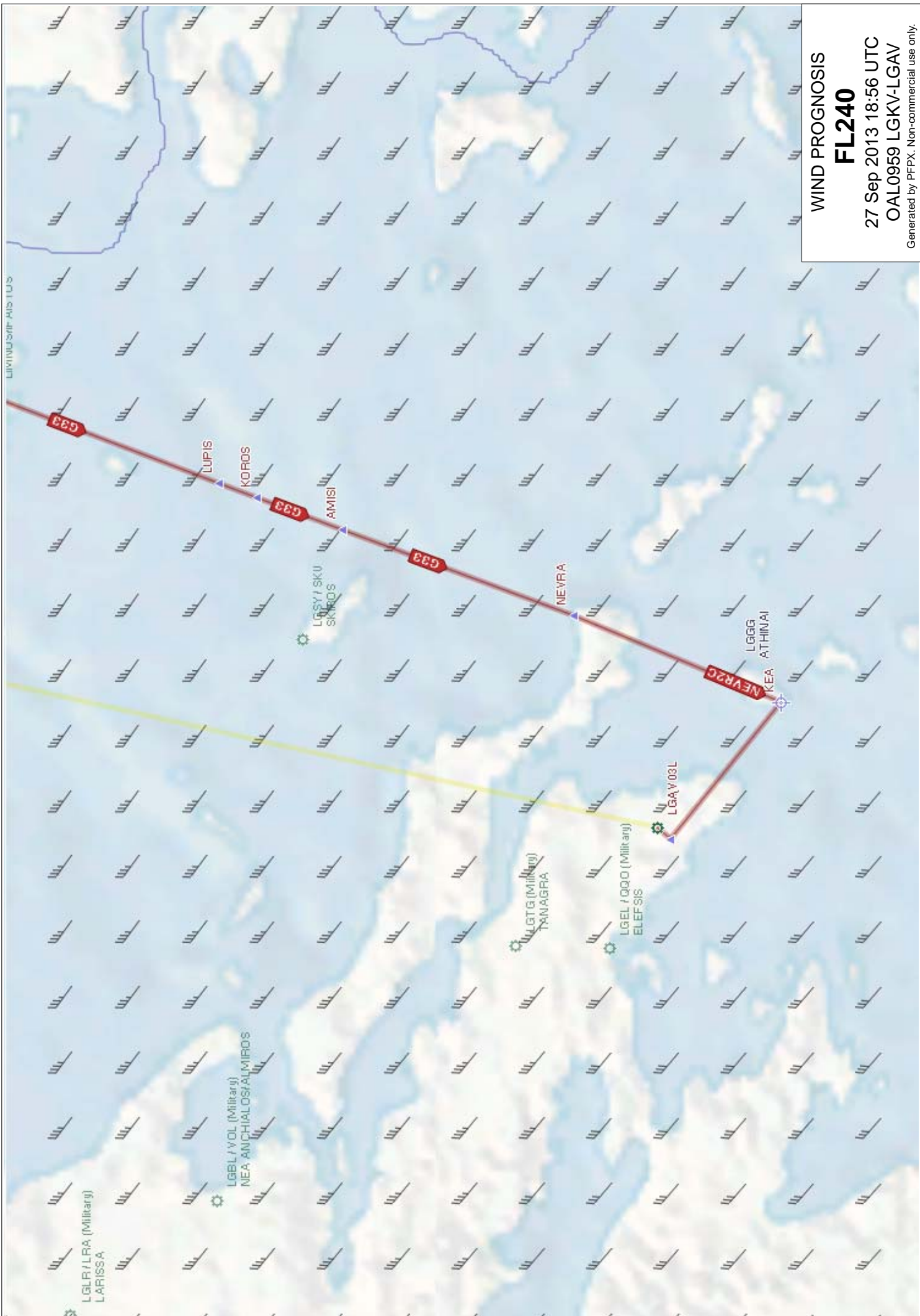
**WIND PROGNOSIS**  
**FL260**  
 27 Sep 2013 18:56 UTC  
 OAL0959 LGKV-LGAV  
 Generated by PEPX. Non-commercial use only.





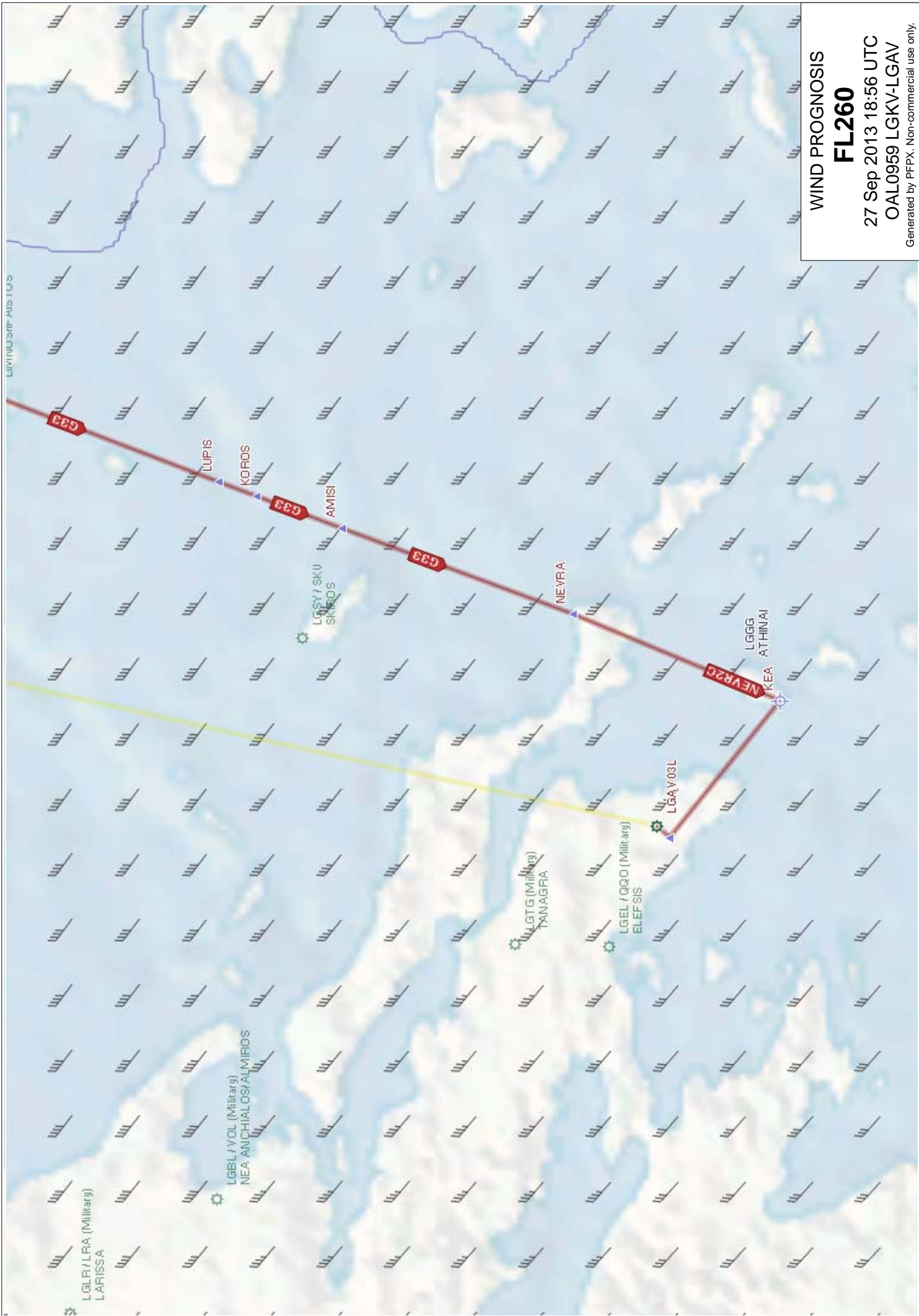
**WIND PROGNOSIS**  
**FL280**  
 27 Sep 2013 18:56 UTC  
 OAL0959 LGKV-LGAV  
 Generated by PEPX. Non-commercial use only.

LIVITROSIP- AIS TUS



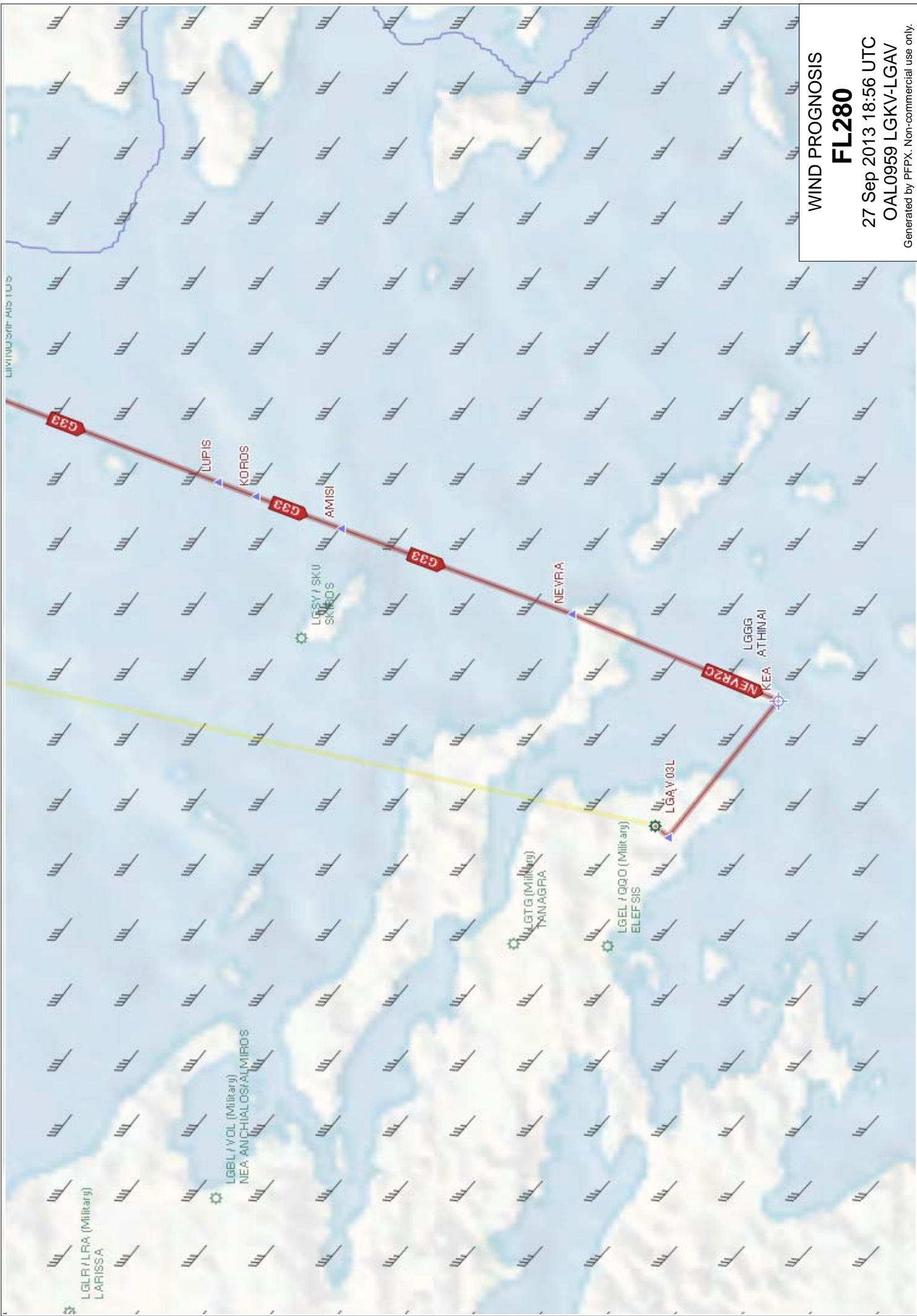
WIND PROGNOSIS  
**FL240**  
 27 Sep 2013 18:56 UTC  
 OAL0959 LGKV-LGAV  
 Generated by PFPX. Non-commercial use only.

LIVNWSHP-AIS-TUS



WIND PROGNOSIS  
**FL260**  
 27 Sep 2013 18:56 UTC  
 OAL0959 LGKV-LGAV  
 Generated by PFPX. Non-commercial use only.

LIVNWSHP-AIS-TUS



WIND PROGNOSIS  
**FL280**  
27 Sep 2013 18:56 UTC  
OAL0959 LGKV-LGAV  
Generated by PFPX. Non-commercial use only.

PGDE14 EGRR 261800

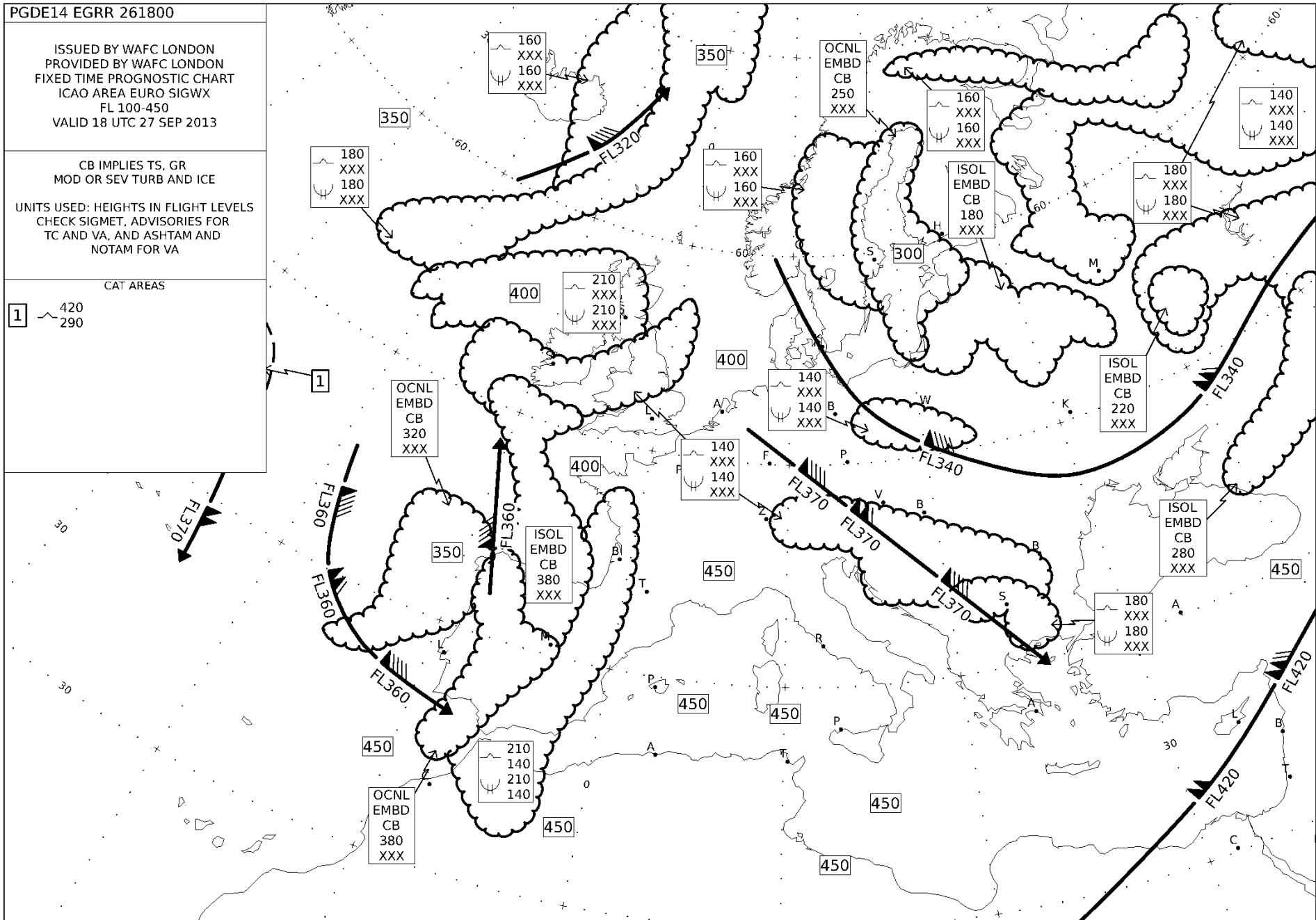
ISSUED BY WAFC LONDON  
PROVIDED BY WAFC LONDON  
FIXED TIME PROGNOSTIC CHART  
ICAO AREA EURO SIGWX  
FL 100-450  
VALID 18 UTC 27 SEP 2013

CB IMPLIES TS, GR  
MOD OR SEV TURB AND ICE

UNITS USED: HEIGHTS IN FLIGHT LEVELS  
CHECK SIGMET, ADVISORIES FOR  
TC AND VA, AND ASHTAM AND  
NOTAM FOR VA

CAT AREAS

1 420  
290



PGDE14 EGRR 270000

ISSUED BY WAFC LONDON  
 PROVIDED BY WAFC LONDON  
 FIXED TIME PROGNOSTIC CHART  
 ICAO AREA EURO SIGWX  
 FL 100-450  
 VALID 00 UTC 28 SEP 2013

CB IMPLIES TS, GR  
 MOD OR SEV TURB AND ICE

UNITS USED: HEIGHTS IN FLIGHT LEVELS  
 CHECK SIGMET, ADVISORIES FOR  
 TC AND VA, AND ASHTAM AND  
 NOTAM FOR VA

CAT AREAS

1 380  
 280

2 410  
 310

