



## **Flight Briefing Package**

**OAL6328 LGAV-LGIR**

**27 Sep 2000 UTC**

OFP #0

ATHENS/ELEFThERIOS VENIZELOS  
(GREECE)

-

IRAKLION/NIKOS KAZANTZAKIS  
(GREECE)

PREPARED BY MICHAIL IONAS

OPS@OAV.GR

27 SEP 1949 UTC

# OAL6328 LGAV-LGIR (27 Sep 2000 UTC)

RELEASE DETAILS SX-OAJ LGAV-LGIR RELEASE # 1

---

FUEL PLANNING (KG)		LGAV - LGIR	
TRIP		1,732	00:35
CONT 5%		189	00:05
ALTN	LGSR	1,029	00:21
FINAL RESV		1,137	00:30
MIN T/O		4,087	01:31
TAXI		120	00:10
RELEASE	LGAV	4,207	01:41
REMAINING	LGIR	2,295	00:51

LOAD PLANNING (KG)		PLANNED	LIMIT
PAYLOAD		18,548	
FUEL		4,207	20,820
ZERO FUEL WEIGHT	LIMIT	61,539	61,689
RAMP WEIGHT		65,746	79,100
TAKE-OFF WEIGHT		65,626	78,900
LANDING WEIGHT		63,894	66,360
UNDERLOAD		150	LIM ZFW

# OAL6328 LGAV-LGIR (27 Sep 2000 UTC)

OLYMPIC AIR VIRTUAL FLIGHTPLAN - IFR OAL6328 SX-OAJ LGAV-LGIR

ALL WEIGHTS IN KILOGRAMS (KG)

STD 27SEP/2000Z

PREPARED 27SEP/1949Z BY MICHAEL IONAS OPS@OAV.GR

\*\*\*\*\*  
COMMANDER: SAKIS GALANIS / PARK LGAV: B05 / PARK LGIR: 3  
CONTACT DISPATCH CONTROL 131.950 20MIN BEFORE PUSHBACK (AVAILABLE 1730Z-2200Z)  
IF NOT AVAILABLE CONTACT OC/DISPATCH - OAV TEAMSPEAK (AVAILABLE 24H)  
\*\*\*\*\*

OAL6328 OFP 1 SX-OAJ/B737-8ERW CF SEL/ELAD ROUTE: LGAVLGIR01  
DEP: LGAV/ATH 03R ELEV 308 FT CRZ SPD: M.78 TTL G/C DIST: 167 NM  
ARR: LGIR/HER 27 ELEV 115 FT INIT ALT: FL230 TTL F/P DIST: 193 NM  
BURN ADJ: 103.0% TTL AIR DIST: 184 NM  
AVG WIND CMP: TL016 KT  
ALT: LGSR/JTR 34R ELEV 123 FT 86 NM

CONFIG	DOW	PAX	CARGO	TOTAL	ULOAD LIM	ZFW	TOW	LDW
STANDARD	42991	188	737	18548	150 ZFW	MAX 61689	78900	66360
						PLN 61539	65626	63894
						ACT .....	.....	.....

\*\* TAKE-OFF DATA LGAV 03R \*\*

COND: 65626 KG - RWY DRY @ +21°C Q1014 270/03 // LMT: CLIMB  
CONFIG: FLAPS 1 - D-T02 +39C  
A/I OFF - A/C ON

SPEEDS: V1/147 - VR/148 - V2/152

ENG OUT: AT 8 DME 'SAT' 109.6 RT TO ITCPT AND PRCD ON R 340 INBD 'KEA' 115.0 .  
AT 15 DME 'KEA' 115.0 ENTER HLDG (160 INBD,LT)

\*\* LANDING DATA LGIR 27 \*\*

COND: 63894 KG - RWY DRY @ +24°C Q1013 000/00 // LMT: STRUCT  
CONFIG: FLAPS 30  
A/I OFF - A/C ON

SPEEDS: VREF/147 - VAPP/152

ENG OUT: AT 3 DME 'IRA' 108.80 RT ON TRACK 360. AT 10 DME 'IRA' 108.80 RT TO  
'GONSO' [12 DME R 054 'IRA' 108.80] (234 INBD,RT)

	FUEL	CORR	ENDUR	
TRIP	1732	.....	00:35	
CONT 5%	189	.....	00:05	
ALTN LGSR	1029	.....	00:21	
FINAL RESV	1137	.....	00:30	
MIN T/O	4087	.....	01:31	.....
EXTRA	0	.....	00:00	CAPTAINS SIGNATURE (....)
TAXI	120	.....	00:10	
RELEASE	4207	.....	01:41	I ACCEPT THIS OFP AND I AM FAMILIAR WITH THE PLANNED ROUTE AND AERODROMES

FUEL TANK CAP 20820 KG / MAX EXTRA FUEL 2466 KG LIM BY LDW

## OAL6328 LGAV-LGIR (27 Sep 2000 UTC)

TRIP CORR FOR 1000 KG TOW INCR: +13 KG / 1000 KG TOW DECR: -10 KG  
 2000 FT LOWER: +25 KG / EET 00:35 CLB: 250/280/78 DES: 78/280/250

LGAV/ATH	STD 20:00	ETD 20:15	ACT OFBL .....	EST T/O 20:25	ACT T/O .....
LGIR/HER	STA 20:50	ETA 21:05	ACT ONBL .....	EST LDG 21:00	ACT LDG .....
			TTL BLCK .....		TTL FLT .....

ATC ROUTE: N0480F230 SORE1T SOREV A10 XAVIS XAVI1A

### ALTERNATE PLANNING

ALTN/RWY	DIST	ALT/FL	COMP	TIME	FUEL	DIFF	ROUTE
LGSR/34R	86	FL140	HD008	00:21	1029	-	XAVI1C XAVIS L617 ATLAN ATLA1A
LGKP/30	115	FL190	TL009	00:25	1183	+154	SIT3G SIT G80 KRC
LGMK/34	148	FL240	HD010	00:31	1472	+443	NAVU1F NAVUS J62 NITSA NITS1T
LGKO/32	186	FL230	HD003	00:36	1702	+673	DELA1D DELAV V57 TIPAS N134 SOTIX N133 ADESO B34 GILOS GILO1L

AWY	WAYPOINT NAME	MT	ALT TMP	WND/VEL FREQ	TAS GS	REM DIST	FUEL POSITION	REM / USED	LEG ETO	ACC ATO
	LGAV/03R		308				4.1 / 0.1			
	ATHENS/ELEFThERI					193	N3756.6 E02357.7	...../.....		
SORE1T	KEA	139	*CLB			32	3.2 / 1.0	08	00:08	
				115.00		161	N3733.4 E02418.9	...../.....		
	*TOC	164	FL230 -21	309/028	480 501	13 149	3.0 / 1.2 N3721.2 E02421.3	01	00:09	...../.....
SORE1T	SOREV	164	FL230 -21	312/026	480 501	16 133	2.9 / 1.3 N3706.8 E02425.5	02	00:11	...../.....
A10	MIL MILOS	164	FL230 -21	314/025 113.50	480 501	21 111	2.8 / 1.4 N3645.9 E02431.2	03	00:14	...../.....
A10	*TOD	137	FL230 -21	314/025	480 505	24 87	2.6 / 1.6 N3626.2 E02450.1	03	00:17	...../.....
A10	ALIKI	137	*DES			40 48	2.5 / 1.7 N3555.5 E02521.9	08	00:25	...../.....
A10	ATLAN	137	*DES			6 42	2.5 / 1.8 N3551.9 E02526.6	01	00:26	...../.....
A10	XAVIS	138	*DES			12 30	2.4 / 1.8 N3542.7 E02535.6	02	00:28	...../.....
XAVI1A	GONSO	208	*DES			17 13	2.4 / 1.8 N3527.9 E02523.5	04	00:32	...../.....
XAVI1A	LGIR/27 IRAKLION/NIKOS K	232	115			13	2.4 / 1.9 N3520.3 E02511.5	03	00:35	...../.....

# OAL6328 LGAV-LGIR (27 Sep 2000 UTC)

WIND INFORMATION - OBS 271200

-----  
(CLIMB)                      MIL                      (DESCENT)  
FL220 309/028 -19 FL270 309/029 -31 FL220 316/023 -18  
FL180 308/023 -10 FL250 312/027 -26 FL180 311/021 -9  
FL130 314/018 -1 FL230 314/025 -21 FL130 317/018 0  
FL090 323/013 +6 FL210 313/024 -16 FL090 323/015 +7  
4000 338/007 +16 FL190 311/023 -11 4000 334/009 +16  
-----

END FLIGHTPLAN OAL6328 SX-OAJ LGAV-LGIR 27SEP2013

## OAL6328 LGAV-LGIR (27 Sep 2000 UTC)

(FPL-OAL6328-IS  
-B738/M-SDE1FGHIJ1RWXYZ/LB1  
-LGAV2015  
-N0480F230 SOREV A10 XAVIS  
-LGIR0035 LGSR  
-PBN/A1B1C1D1L101S1 NAV/RNVD1E2A1 DOF/130927 REG/SXOAJ SEL/ELAD RVR/75  
OPR/OLYMPIC AIR VIRTUAL  
-E/0131)

**OAL6328 LGAV-LGIR (27 Sep 2000 UTC)**

WEATHER BRIEFING - GENERATED 27 SEP 2013 19:49 UTC

-----  
LGAV LGIR LGSR LGKP LGMK LGKO

-----  
ORIGIN: LGAV/ATH (ATHENS/ELEFThERIOS VENIZELoS, GREECE)

-----  
LGAV 271920Z 27003KT CAVOK 21/15 Q1014  
LGAV 271700Z 2718/2818 VRB05KT 9999 FEW025

-----  
DESTINATION: LGIR/HER (IRAKLION/NIKOS KAZANTZAKIS, GREECE)

-----  
LGIR 271920Z VRB05KT 9999 FEW020 24/21 Q1013  
LGIR 271700Z 2718/2818 32018KT 9999 FEW020  
      BECMG 2722/2724 VRB03KT

-----  
ALTERNATE: LGSR/JTR (SANTORINI, GREECE)

-----  
LGSR 271920Z 25006KT 9999 FEW025 22/17 Q1013 NOSIG  
LGSR 271700Z 2718/2803 31010KT 9999 FEW020

-----  
ALTERNATE: LGKP/AOK (KARPATHOS, GREECE)

-----  
LGKP 271750Z 29015KT 9999 FEW020 23/18 Q1011  
LGKP 271700Z 2718/2803 28016KT 9999 FEW020

-----  
ALTERNATE: LGMK/JMK (MIKONOS, GREECE)

-----  
LMK 271750Z 02004KT 9999 FEW015 22/17 Q1012  
LMK 271700Z 2718/2803 35008KT 9999 FEW015

-----  
ALTERNATE: LGKO/KGS (KOS/IPPOKRATIS, GREECE)

-----  
LGKO 271920Z 32007KT CAVOK 21/18 Q1012  
LGKO 271700Z 2718/2818 30010KT 9999 FEW025

**OAL6328 LGAV-LGIR (27 Sep 2000 UTC)**

NOTAM BRIEFING - GENERATED 27 SEP 2013 19:49 UTC

-----  
LGAV LGIR LGSR LGKP LGMK LGKO  
-----

ORIGIN: LGAV/ATH (ATHENS/ELEFThERIOS VENIZELOS, GREECE)  
-----

A1641/13

KEA VOR 'KEA' 115.00MHZ ON TEST DO NOT USE. KEA DME CH97X (ID:KEA)  
NORMALLY OPERATING. 23 SEP 09:27 2013 UNTIL 30 SEP 11:30 2013. CREATED: 23 SEP  
09:30 2013

A1640/13

CONCENTRATION OF BIRDS INCLUDING  
FALCONS,BUZZARDS,STARLINGS,SWALLOWS AND OTHER SMALL PASSERINES IN  
THE VICINITY OF THE AIRPORT.  
CAUTION ADVISED. 01 OCT 00:01 2013 UNTIL 30 NOV 23:59 2013. CREATED: 23 SEP  
08:32 2013

A1307/13

REF AIP GREECE AIRAC AMDT 8-13(WEF 22 AUG 2013) AD2-LGAV-4,  
SECTION 2.12,COL 5 LINE 4,  
AMEND TO READ RWY21R END COORDINATES AS FOLLOWS:  
375517,46N0235507,99E. 22 AUG 00:01 2013 UNTIL PERM. CREATED: 31 JUL 08:47 2013

A1287/13

CONCENTRATION OF BIRDS INCLUDING FALCONS,DOVES,STORKS,  
SWALLOWS AND SWIFTS IN THE VICINITY OF THE AIRPORT.  
CAUTION ADVISED. 01 AUG 00:00 2013 UNTIL 30 SEP 23:59 2013. CREATED: 29 JUL  
09:35 2013

A1243/13

ALL GENERAL AVIATION FLIGHTS WITH MTOW MORE THAN 5700 KG SHALL  
SEND A SCHEDULE MOVEMENT ADVICE (SMA) MESSAGE TO THE AIRPORT  
SCHEDULE FACILITATOR IN A TURNAROUND FORMAT ACCORDING TO IATA  
STANDARD SCHEDULE INFORMATION MANUAL CHAPTER 6.10.  
SMA SHALL BE SENT DURING WORKING HOURS 0830-1600 LOCAL TIME VIA  
SITA FAX OR E-MAIL WITH COPIES TO SCHEDULING AND PLANNING DEPT AND  
TO AIRPORT SERVICES OPERATION CENTER (ASOC).  
CANCELLATION MESSAGES SHALL BE SENT AS SOON AS FLIGHTS WILL NOT  
OPERATE.  
ABOVE PROCEDURE DOES NOT APPLY TO HELICOPTERS VIP MEDICAL AND SAR  
FLIGHTS.  
FOR GENERAL AVIATION FLIGHTS WITH MTOW LESS THAN 5700 KG AIP GREECE  
AD2 2.20.1.2 APPLIES.  
CONTACT DETAILS :  
SCHEDULE FACILITATOR SITA:ATHHAXH,  
TEL:21035361189/190/811/813/815/816, FAX:2103537418  
E-MAIL : ESAGOS-HSCA(AT)ATHENSAIRPORT.GR  
LGAV ASOC SITA: ATHIAXH, TEL: 2103540000, FAX: 2103540095  
E-MAIL: ASOC-SENIOR-SRV(AT)AIA.GR  
LGAV SCHEDULING AND PLANNING DEPT SITA: ATHSCXH, TEL: 2103531425,  
FAX: 2103532254, E-MAIL: SCHED-PLANNING (AT) AIA.GR. 23 JUL 09:36 2013 UNTIL  
30 SEP 23:59 2013. CREATED: 23 JUL 09:39 2013

A1190/13

OBSTACLE LIGHTS ON BOYATI ATHINAI ERT RADIO MAST OUT OF SERVICE.  
OBST COORDINATES (NOT IN WGS 84) 380904N0235138E. REF AIP-GREECE ENR  
5.4-2. AND ENR 1.1.7.6. 14 JUL 12:00 2013 UNTIL 31 DEC 23:59 2013. CREATED:  
14 JUL 11:37 2013



## OAL6328 LGAV-LGIR (27 Sep 2000 UTC)

A1020/13

REF. AIP GREECE AD2-LGAV-9 PARAGR 2.20.2.1-J 20 SEP 2012  
ADD B 747-800 TO EXISTING A/C TYPES. 14 JUN 05:27 2013 UNTIL PERM. CREATED:  
14 JUN 05:33 2013

A1018/13

REF AIP GREECE AD-2-LGAV-STAR-3 28 JUN 2012, IN THE HOLDING  
PATTERN AT KRO VOR/DME, ON THE SEGMENT NEVRA-KRO VOR/DME, ON THE  
SEGMENT KEP1R-KRO VOR/DME AND ON THE SEGMENT VARIX-KRO VOR/DME,  
AMEND TO READ 7000FT INSTEAD OF 6000FT. 14 JUN 05:21 2013 UNTIL PERM. CREATED:  
14 JUN 05:25 2013

A1016/13

REF AIP GREECE, THE PROCEDURES DESCRIBED IN THE FOLLOWING PAGES  
ARE SUSPENDED.

1. AD2-LGAV-SID-2 28 JUN 2012
2. AD2-LGAV-SID-7 28 JUN 2012
3. AD2-LGAV-SID-10 28 JUN 2012
4. AD2-LGAV-SID-12 28 JUN 2012
5. AD2-LGAV-STAR-2 28 JUN 2012. 14 JUN 05:08 2013 UNTIL PERM. CREATED: 14 JUN  
05:17 2013

A0997/13

LGAV/EL VENIZELOS/INTL:AT AREA BEYOND 10NM AND ALTITUDE BELOW  
4000FT FOR ANGLES GREATER THAN 18 DEGREES FROM THE LOCALIZER CENTER  
LINE THE ILS RWY 03R (I-ATR) IS OUT OF USE DUE TO FALSE CAPTURE. 12 JUN 07:59  
2013 UNTIL PERM. CREATED: 12 JUN 08:45 2013

A0893/13

REFERENCE AIP GREECE AD2-LGAV-SID-1 28JUN 2012 ON THE DESCRIPTIONS  
OF SIDS RWY 03R:

- 1)AT THE END OF EACH DESCRIPTION OF THE SIDS  
NEVRA1J,KEPIR1J,VARIX1J,KEA1J,GENDO1J,SOREV2J,VELOP2J,ASTOV2J,NEMES3  
J,RILIN2J,PIKAD2J,RIMAX1J,ABLON2J, DELETE:SEE NOTE 1.
- 2)AT THE END OF THE DESCRIPTION OF BIBEX1J, HAND AMEND TO READ:SEE  
NOTE, INSTEAD OF:SEE NOTE 1 AND 2.
- 3)AT THE END OF DESCRIPTIONS OF SIDS RWY 03R:  
A. DELETE NOTE 1:DO NOT CLIMB ABOVE 4000FT(QNH)UNTIL REACHING  
14DME/KRO,UNLESS CLEARED BY ATC.  
B. HAND AMEND TO READ NOTE:THIS SID SHOULD BE USED FOR DESTINATION  
PAROS AIRPORT(LGPA),INSTEAD OF:NOTE 2:THIS SID SHOULD BE USED FOR  
DESTINATION PAROS AIRPORT(LGPA).
- 4.AT EACH DESCRIPTIOPN OF THE SIDS KEA1J,  
BIBEX1J,GENDO1J,SOREV2J,VELOP2J,ASTOV2J,NEMES3J,RILIN2J,PIKAD2J,  
RIMAX1J,ABLON2J, HAND AMEND TO READ:CLIMB ON RADIAL 048 SAT TO  
1100FT(QNH).AT 1100FT(QNH)TURN RIGHT,INTERCEPT AND FOLLOW RADIAL 266  
KRO TO RADIAL 266 KRO/14DME FIX NOT ABOVE 4000FT(QNH) UNLESS  
OTHERWISE INSTRUCTED BY ATC,INSTEAD OF: CLIMB ON RADIAL 048 SAT  
TO1100FT(QNH).AT 1100FT(QNH) TURN RIGHT, INTERCEPT AND FOLLOW RADIAL  
266 KRO CLIMBING TO 4000FT(QNH).MAINTAIN 4000FT(QNH) UNTIL PASSING  
14DME KRO. 27 MAY 09:48 2013 UNTIL PERM. CREATED: 27 MAY 09:53 2013

A0716/13

REFERENCE AIP GREECE AD2-LGAV:

- 1)ON AD2-LGAV-SID-1 CANCEL THE SID NEMES 3J 2)ON AD2-LGAV-SID-4  
CANCEL THE SID'S NEMES 1T AND GERMI 1T 3)ON THE AD2-LGAV-SID-5  
CANCEL THE SID NEMES 3L 4)ON THE AD2-LGAV-SID-9 CANCEL THE SID NEMES  
3G
- 5)ON THE AD2-LGAV-SID-11 CANCEL THE SID NEMES 3F. 29 APR 07:33 2013 UNTIL PERM.  
CREATED: 29 APR 07:35 2013

## OAL6328 LGAV-LGIR (27 Sep 2000 UTC)

A0518/13

REF AIP GREECE PART 3 AD2-LGAV-2.21.1.3 RUNWAY USE SYSTEM  
ADDITIONAL HOURS OF LGAV - NOISE ABATMENT PROCEDURES AS FOLLOW :  
31 MAR TILL 27 OCT 2013 DAILY 12:00-15:00. 31 MAR 02:00 2013 UNTIL 27 OCT 02:00  
2013. CREATED: 29 MAR 04:55 2013

A0103/12

ELEFTHERIOS VENIZELOS AIRPORT HAS BEEN APPROVED BY HCAA TO BE USED  
BY B747-800 AIRCRAFT AS ALTERNATE OR FOR A LIMITED NUMBER OF FLIGHTS.  
THE EXISTING ILS PROCEDURES HAVE BEEN DESIGNED TAKING INTO  
CONSIDERATION THE COLLISION RISK MODEL. 24 JAN 08:19 2012 UNTIL PERM. CREATED:  
24 JAN 08:40 2012

-----  
DESTINATION: LGIR/HER (IRAKLION/NIKOS KAZANTZAKIS, GREECE)  
-----

A1648/13

ANEMOMETER RWY27 U/S. 23 SEP 15:50 2013 UNTIL 30 SEP 09:00 2013. CREATED: 23  
SEP 17:27 2013

A1633/13

IRAKLION/N.KAZANTZAKIS:TWY H CLOSED FROM TWY D TO RWY 09/27. 21 SEP 10:03 2013  
UNTIL 21 DEC 09:00 2013. CREATED: 21 SEP 10:06 2013

A1521/13

RTIL RWY 09 US. 06 SEP 13:13 2013 UNTIL 06 DEC 23:59 2013. CREATED: 06 SEP 13:17  
2013

A1335/13

TWY C UNSERVICEABLE FOR WIDE BODY AIRCRAFTS. 05 AUG 12:20 2013 UNTIL PERM.  
CREATED:  
05 AUG 12:22 2013

A1203/13

ARRIVING AIRCRAFT TO LGIR/NIKOS KAZANTZAKIS AERODROME IS POSSIBLE  
TO EXPERIENCE LAZER BEAM STRIKE DURING FINAL APPROACH RWY 27.CAUTION  
ADVISED TO ALL PILOTS. 16 JUL 10:00 2013 UNTIL 30 OCT 23:59 2013. CREATED: 16  
JUL 09:50 2013

A0904/13

DUE TO MAJOR CHANGES IN APRON T CONFIGURATION, WE ESTABLISH THE  
FOLLOWING PROCEDURE: ONCE EITHER TOW-BAR OR TOWBARLESS TOW-TRACTOR  
IS FULLY CONNECTED TO THE AIRCRAFT, PILOTS OF AIRCRAFTS PARKED IN  
APRON T (EXCLUDING STANDS T1, T2), SHALL REQUEST FROM ATC START-UP  
CLEARANCE INDICATING THEIR AIRCRAFT PARKING STAND NUMBER.START-UP  
PROCEDURE WILL BE INITIATED AND COMPLETED WITHIN THE AIRCRAFT  
STAGING AREA IN ORDER TO MINIMIZE TWY OCCUPANCY TIME.  
ONCE START-UP PROCEDURE HAS BEEN COMPLETED, PILOTS SHALL REQUEST  
FROM ATC PUSH-BACK CLEARANCE.UPON OBTAINING PUSH-BACK CLEARANCE:  
A)AIRCRAFTS OCCUPYING STANDS T3,T4 WILL BE PUSHED BACK TO APRON TWY  
C/L WITH NOSE HEADING WEST/NORTH-WEST.AFTER THE COMPLETION OF THE  
PUSH-BACK PROCEDURE AIRCRAFTS WILL BE TOWED UNTIL THEIR NOSE GEAR IS  
NEXT TO STAND T4 ENTRY MARKING.  
B)AIRCRAFTS OCCUPYING STANDS T5,T6,T7 WILL BE PUSHED-BACK TO TWY D  
WITH NOSE HEADING EITHER EAST OR WEST BASED UPON DEPARTING  
CONDITIONS.

THE SAME PROCEDURES REGARDING START-UP AND PUSH-BACK WILL BE APPLIED  
FOR AIRCRAFTS PARKED IN APRON (L) AS WELL. 28 MAY 10:04 2013 UNTIL PERM.  
CREATED:  
28 MAY 10:36 2013

**OAL6328 LGAV-LGIR (27 Sep 2000 UTC)**

A0463/13

LGIR:LONG STAY OF FOREIGN MILITARY A/C IS NOT PERMITTED.LANDING OF FOREIGN MILITARY A/C CARRYING DANGEROUS GOODS IS ALSO NOT PERMITTED.EFFECTIVE FROM 01/04/2013 UNTIL 31/10/2013. 01 APR 00:01 2013 UNTIL 31 OCT 23:59 2013. CREATED: 21 MAR 10:12 2013

A0462/13

LGIR:LONG STAY OF GENERAL AVIATION A/C AND A/C CONDUCTING BUSINESS FLIGHTS (I.E. AIRTAXI SERVICES) IS NOT PERMITTED UNLESS THERE IS 48 HRS PRIOR NOTICE AND APPROVAL BY THE LGIR AIRPORT AUTHORITY.EFFECTIVE FROM 01/04/2013 UNTIL 31/10/2013. 01 APR 00:01 2013 UNTIL 31 OCT 23:59 2013. CREATED: 21 MAR 09:56 2013

M0183/13

LGIR/N.KAZANTZAKIS:NET BARRIERS NOT AVAILABLE. 23 APR 04:00 2013 UNTIL PERM. CREATED: 18 APR 11:21 2013

-----  
ALTERNATE: LGSR/JTR (SANTORINI, GREECE)  
-----

B0628/13

RTIL RWY 16L U/S. 21 JUL 15:29 2013 UNTIL 31 DEC 23:59 2013. CREATED: 21 JUL 15:30 2013

B0599/13

RVR U/S. 05 JUL 08:21 2013 UNTIL 31 DEC 22:00 2013. CREATED: 05 JUL 08:23 2013

B0508/13

BIRD CONCENTRATION (SEAGULLS) IN MOVEMENT AREA. CAUTION ADVISED. 10 JUN 11:22 2013 UNTIL 31 OCT 23:59 2013. CREATED: 10 JUN 11:24 2013

B0506/13

TRAINING FLIGHTS TO SANTORINI AIRPORT MUST OBTAIN PERMISSION AT LEAST THREE HOURS PRIOR ETA. FOR PERMISSION CONTACT SANTORINI APP/TWR AT TEL. NUM :+302286028404, OR +302286028448. 11 JUN 03:00 2013 UNTIL 30 SEP 21:00 2013. CREATED: 10 JUN 06:42 2013

B0437/13

DUE TO LIMITED PARKING POSITIONS ALL GENERAL AVIATION FLIGHTS INTENDING TO LAND AT SANTORINI AIRPORT MUST OBTAIN PRIOR PERMISSION (PPR) FROM THE AIRPORT AUTHORITY AT LEAST 24HR PRIOR ETA. THE APPLICATION MUST INCLUDE:

1. AIRCRAFT REGISTRATION, TYPE, MTOW AND CALLSIGN
2. DATE OF ARRIVAL, ETA AND AIRPORT OF ORIGIN
3. DATE OF DEPARTURE, ETD AND DESTINATION AIRPORT
4. HANDLING AGENT
5. COMMUNICATION DETAILS (FAX, E-MAIL)
6. OPERATOR (IF APPLICABLE)

THE APPLICATION MUST BE ADDRESSED TO THE AIRPORT AUTHORITY AND SENT BY FAX(++302286033349) OR E-MAIL KASRGAE(AT)HCAA.GR. THE AIRPORT AUTHORITY MUST ALSO BE NOTIFIED IN IN CASE OF SCHEDULE CHANGES OR CANCELATIONS OF PREVIOUSLY AUTHORIZED FLIGHTS. 01 JUN 00:01 2013 UNTIL 30 SEP 23:59 2013. CREATED: 24 MAY 07:40 2013

B0387/13

LGSR/SANTORINI:AERODROME HOURS OF SERVICE AS FLW:  
FROM 09/05/2013 TILL 26/10/2013

A.FROM 09/05 TILL 28/05  
MON,THU,FRI 0230-1800

**OAL6328 LGAV-LGIR (27 Sep 2000 UTC)**

TUE,WED 0230-1930  
SAT 0230-1900  
SUN 0230-2230

B.FROM 29/05 TILL 30/09  
EUERY DAY 0001-2400

C.FROM 01/10 TILL 28/10  
MON,WED,THU,FRI 0230-1800  
TUE 0230-1930  
SAT,SUN 0230-1900

NOTES:

1.ON 10/05 FRI 0700-1800  
2.ON 18/05,25/5,05/10,12/10 SAT 0230-2030. 09 MAY 10:47 2013 UNTIL 26 OCT 23:59 2013. CREATED: 09 MAY 10:51 2013

M0392/13  
SANTORINI TACAN SAN CH 111X U/S. 19 SEP 06:32 2013 UNTIL 30 SEP 23:59 2013.  
CREATED:  
19 SEP 06:40 2013

M0388/13  
LGSR : NORTH ARRESTING GEAR OF RUNWAY 34R-16L IS REMOVED. 17 SEP 06:59 2013  
UNTIL  
17 DEC 15:00 2013. CREATED: 17 SEP 07:05 2013

M0188/13  
HAF SERVICES WILL BE PROVIDED  
A. EVERY DAY DURING DAYLIGHT AND THE REST HOURS OF THE DAY 30 MIN  
PRIOR NOTICE.  
B. WEEKEND AND PUBLISHED HOLIDAYS AFTER 30 MIN PRIOR NOTICE. 23 APR 07:11 2013  
UNTIL 31 DEC 21:59 2013. CREATED: 23 APR 07:30 2013

M0408/08  
SINK TYPE ARRESTING GEAR CABLE INSTALLED AND OPERATES AT THE  
BEGINNING OF RWY 34R, DEFINED AS THE SOUTH ARRESTING GEAR OF RWY  
34R/16L. 28 AUG 12:18 2008 UNTIL PERM. CREATED: 28 AUG 12:23 2008

-----  
ALTERNATE: LGKP/AOK (KARPATOS, GREECE)  
-----

B0812/13  
KARPATOS:TRAINING FLIGHTS DESTINATING KARPATOS AIRPORT HAVE TO  
CONTACT KARPATOS AFIS BY TEL 0030-22450-91120 AT LEAST 24 HOURS  
BEFORE THE FLIGHT,IN ORDER TO GET A PERMISSION. 21 SEP 04:36 2013 UNTIL 31 OCT  
23:59 2013. CREATED: 21 SEP 04:38 2013

B0708/13  
ALL GENERAL AVIATION FLIGHTS MUST REQUEST PRIOR APPROVAL FROM  
AIRPORT AUTHORITIES AT LEAST 48 HOURS BEFORE THE ESTIMATED TIME OF  
ARRIVAL TO LGKP,DURING AIRPORT'S OPENING HOURS, DUE TO PARKING  
LIMITATIONS. PRIOR COORDINATION WITH HANDLING AGENCY IS ALSO  
REQUIRED. 20 AUG 07:00 2013 UNTIL 31 OCT 23:59 2013. CREATED: 20 AUG 07:07 2013

B0679/13  
KARPATOS AERODROME HOURS OF SERVICE AS FOLLOWS:  
FROM 08/08/2013 TILL 26/10/2013  
MON 0300-1100 1320-1730  
TUE,THU 0320-1850  
WED 0540-0950 1320-1445

# OAL6328 LGAV-LGIR (27 Sep 2000 UTC)

FRI 0630-1730  
SAT 0320-0650 1430-1730  
SUN 0630-1730

## NOTES:

1.ON 09/08,16/08,30/8 FRI 0630-1930  
2.ON 21/8,28/08 WED 0300-0950 1320-1445  
3.ON 23/08 FRI 0520-1930  
4.ON 04/9 WED 0400-0950 1320-1445  
5.ON 04/09 WED 0400-0950 1320-1445  
6.ON 09/09 MON 0610-0950 1320-1730. 08 AUG 09:49 2013 UNTIL  
26 OCT 23:59 2013. CREATED: 08 AUG 09:51 2013

## B0581/13

LIGHTS OF RWY 12/30 ARE OPERATING ONLY ONE BY ONE. 30 JUN 10:16 2013 UNTIL 30  
SEP 20:59 2013. CREATED: 30 JUN 10:18 2013

## B0580/13

KARPATHOS:FREQ 122,10MHZ U/S. 30 JUN 10:14 2013 UNTIL 30 SEP 20:59 2013.  
CREATED:  
30 JUN 10:15 2013

## B0578/13

ALDIS LAMP AT THE CONTROL TOWER NOT AVAILABLE. 30 JUN 10:09 2013 UNTIL 30 SEP  
20:59 2013. CREATED: 30 JUN 10:10 2013

## B0577/13

SIGNAL FLARES ARE NOT AVAILABLE. 30 JUN 10:06 2013 UNTIL 30 SEP 20:59 2013.  
CREATED:  
30 JUN 10:08 2013

## B0575/13

CAUTION ADVISED DUE TO SEAGULL CONCENTRATION IN THE VICINITY OF  
THE AIRPORT ESPECIALLY IN THRESHOLD OF RWY 30. 30 JUN 10:00 2013 UNTIL 30 SEP  
20:59 2013. CREATED: 30 JUN 10:01 2013

## B0574/13

KARPATHOS L KRC 314KHZ OUT OF SERVICE. 30 JUN 09:57 2013 UNTIL 30 SEP 20:59  
2013.  
CREATED: 30 JUN 09:59 2013

## B0573/13

WIND DIRECTION INDICATOR RWY 30 OUT OF SERVICE. 30 JUN 09:55 2013 UNTIL 30 SEP  
20:59 2013. CREATED: 30 JUN 09:57 2013

## B0572/13

PAPI LIGHTS RWY 12 OUT OF SERVICE. 30 JUN 09:52 2013 UNTIL 30 SEP 20:59 2013.  
CREATED: 30 JUN 09:54 2013

-----  
ALTERNATE: LGMK/JMK (MIKONOS, GREECE)  
-----

## A1574/13

LGMK TOWER BEACON UNSERVICEABLE. 15 SEP 11:41 2013 UNTIL 30 SEP 23:59 2013.  
CREATED:  
15 SEP 11:44 2013

## A0707/07

REF AIP GR VOLII PAGE LGMK IAC 1 16 FEB 2006  
1.THE ARRIVAL PROCEDURE(CIRCLING) TO RWY 16 OF LGMK AD SHALL BE  
ALLOWED ONLY DURING DAYTIME DUE TO MOUNTAINOUS TERRAIN AND

## OAL6328 LGAV-LGIR (27 Sep 2000 UTC)

ABSENCE OF OBSTACLE LIGHTING .  
2.ATTENTION HAS TO BE GIVEN TO THE CURRENT WIND CONDITIONS FROM ALL  
AIRCRAFT OPERATORS IN ORDER TO AVOID ANY DIVERSION. 13 APR 09:25 2007 UNTIL  
PERM. CREATED: 13 APR 09:30 2007

B0797/13

AERODROME FLOODLIGHT PYLON N01 AT THE NOTHERN PART OF THE  
APRON OUT OF SERVICE. 16 SEP 09:14 2013 UNTIL 16 OCT 23:59 2013. CREATED: 16  
SEP 09:15 2013

B0786/13

LGMK/MIKONOS:AERODROME HRS OF SERVICES AS FLW :

FROM 13/09/2013 TILL 26/10/2013

A.FROM 13/09 TILL 30/09

MON,TUE,THU,FRI,SAT 0300-1715

WED 0300-1900

SUN 0300-1915

B.FROM 01/10 TILL 26/10

MON 0800-1715

TUE 0700-1500

WED 0630-1715

THU,FRI 0700-1715

SAT 0800-1500

SUN 0530-1715

NOTES:

1.-ON 13/09 FRI 0245-2030

2.-ON 14/09 SAT 0300-2030

3.-ON 15/09 SUN 0300-2120

4.-ON 20/09 FRI 0300-1845

5.-ON 06/10 SUN 0530-1915

7.-ON 07/10 MON 0700-1715. 13 SEP 10:48 2013 UNTIL 26 OCT 23:59 2013. CREATED:  
13 SEP 10:52 2013

B0756/13

DUE TO MIKONOS VOR/DME MKN 110MHZ/CH37X LIMITATIONS (SEE NOTAM  
B0755/13)STARS OF RWY34: PIDAX 1A, PEROK 1A, NITSA 1A, DIDIS 1A  
VARIX 1P AND VARIX 1Q SHALL BE USED WITH MINIMUM ALTITUDE  
5500FT(QNH) INSTEAD OF 3500FT(QNH). 03 SEP 10:04 2013 UNTIL 03 DEC 22:00 2013.  
CREATED: 03 SEP 10:06 2013

B0755/13

MIKONOS VOR/DME MKN 110MHZ/CH37X OUT OF SERVICE AT SECTOR BTN RAD  
080-125 CW. 03 SEP 09:11 2013 UNTIL 03 DEC 22:00 2013. CREATED: 03 SEP 09:14  
2013

B0754/13

PYROTECHNIC SIGNALS ARE NOT AVAILABLE AT LGMK ATC TOWER. 03 SEP 09:05 2013 UNTIL  
03 DEC 22:00 2013. CREATED: 03 SEP 09:08 2013

B0752/13

LGMK:MOTOR AMBULANCE OUT OF SERVICE. 03 SEP 08:44 2013 UNTIL 03 DEC 22:00 2013.  
CREATED: 03 SEP 08:47 2013

B0740/13

LGMK/MYKONOS:RTIL RWY16 U/S. 02 SEP 08:10 2013 UNTIL 30 SEP 23:59 2013. CREATED:  
02 SEP 08:14 2013

**OAL6328 LGAV-LGIR (27 Sep 2000 UTC)**

B0630/13

LGMK/MIKONOS OBSTACLE LIGHTS OF AERODROME FLOODLIGHTS PYLONS NO  
1,2,3,4,5 OUT OF SERVICE. 22 JUL 10:16 2013 UNTIL 22 OCT 23:59 2013. CREATED:  
22 JUL 10:22 2013

B0259/13

MYKONOS TRAINING FLIGHTS ARE NOT ACCEPTED WITHIN MYKONOS TMA  
UNLESS PRIOR PERMISSION IS OBTAINED BY MYKONOS APP(CONTACT TEL  
2289079004). 01 APR 09:21 2013 UNTIL 26 OCT 23:59 2013. CREATED: 01 APR 09:26  
2013

B0639/08

REF NOTAM B0135/08, ON AIP GREECE VOLII PAGE LGMK 2/ 31 JAN  
2007/01,  
1. WHEN EXECUTING STAR LETSO 1A, BETWEEN LETSO AND R083MKN/10DME YOU  
MAY ENCOUNTER DISCREPANCIES IN MKN DME READINGS.  
2. STAR LETSO 1B IS SUSPENDED. 16 JUL 08:04 2008 UNTIL PERM. CREATED: 16 JUL  
08:05 2008

M0255/13

REF MAIP GREECE VOL-2B EFF 01 JUN 2013 ON PAGES M-1-2 AND M-1-3:  
1. STAR LETSO 1B IS SUSPENDED.  
2. WHEN EXECUTING STAR LETSO 1A, BETWEEN LETSO AND R-083 MKN/10 DME  
YOU MAY ENCOUNTER DISCREPANCIES IN MKN READINGS. 04 JUN 08:00 2013 UNTIL PERM.  
CREATED: 04 JUN 08:33 2013

-----  
ALTERNATE: LGKO/KGS (KOS/IPPOKRATIS, GREECE)  
-----

A1605/13

IPPOKRATIS TOWER MIL REGIONAL FREQ 257.8MHZ OUT OF SERVICE. 17 SEP 18:19 2013  
UNTIL 31 OCT 23:59 2013. CREATED: 17 SEP 18:23 2013

A0994/13

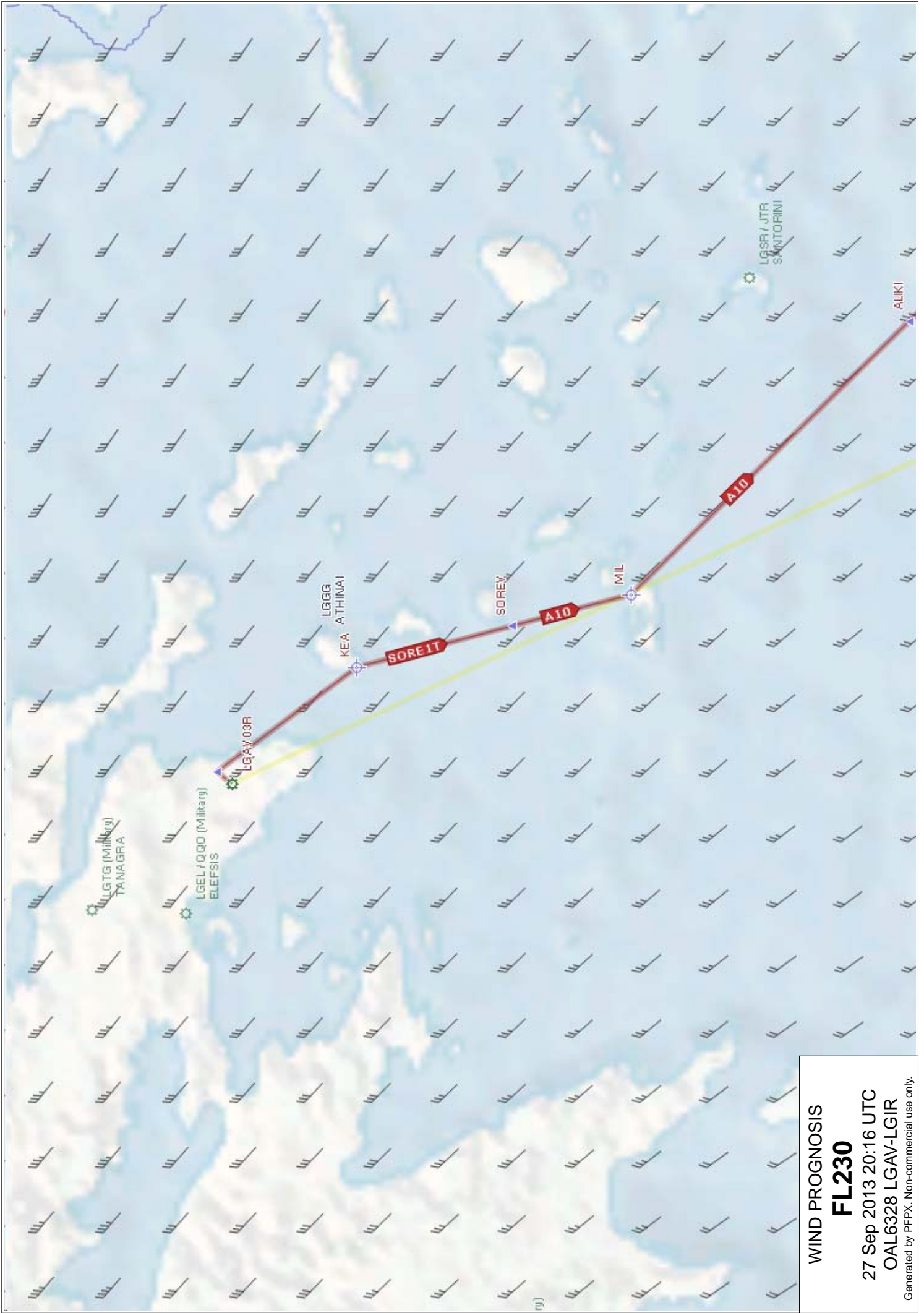
RVR OUT OF SERVICE. 11 JUN 11:47 2013 UNTIL 30 NOV 23:59 2013. CREATED: 11 JUN  
11:53 2013

A1135/12

AVGAS 100LL NOT AVAILABLE. 27 JUL 10:55 2012 UNTIL PERM. CREATED: 27 JUL 10:56  
2012

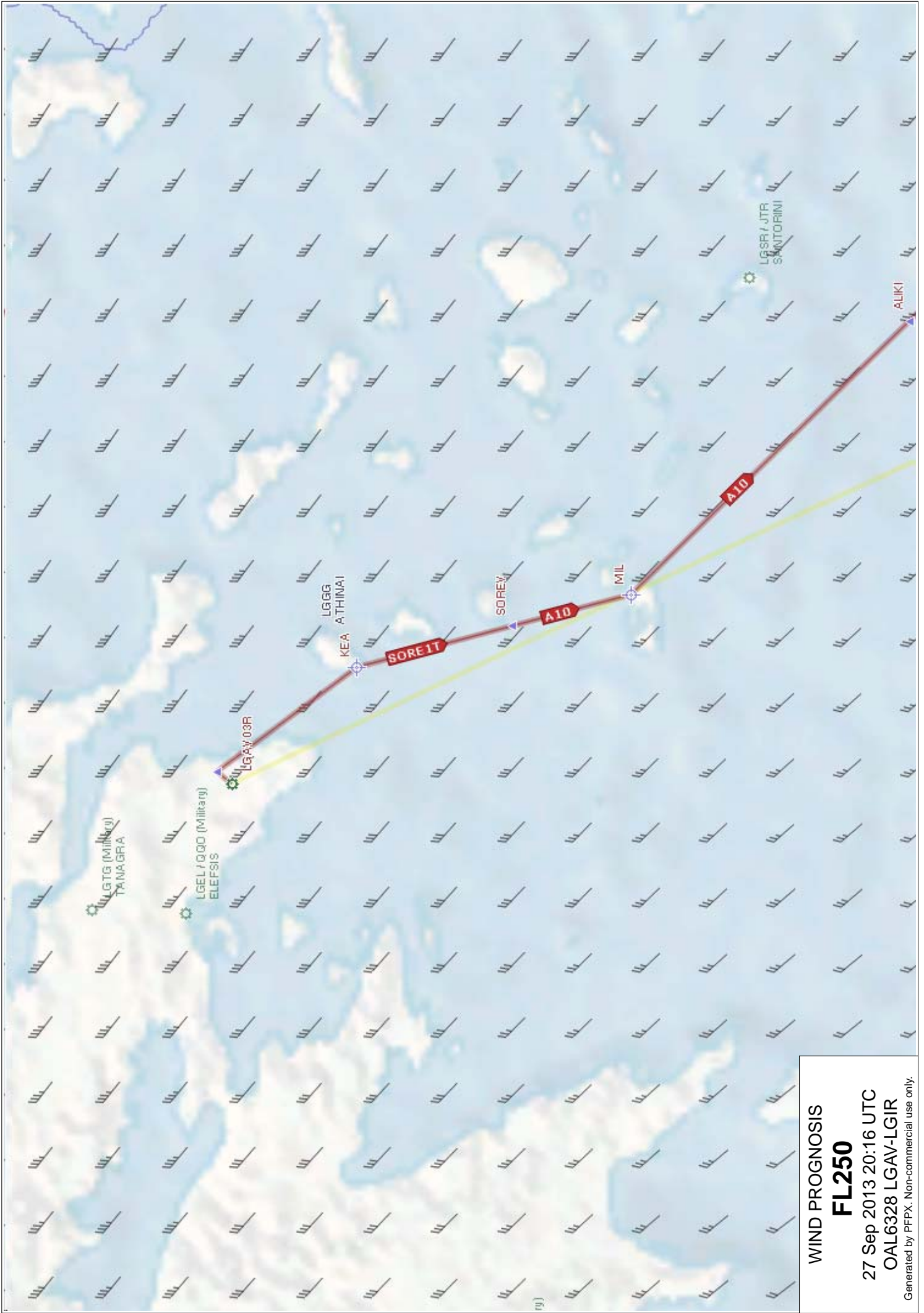
B0398/12

REF AIP GREECE VOL II PAGE LGKO 3 - 30 SEP 1998/93 HAND AMEND TO  
READ AS FOLLOW:  
1)ON THE TOP OF THE PLAN VIEW AMEND TO READ 'AERODROME ELEV 412FT'  
INSTEAD OF 'AERODROME ELEV 409FT'  
2)ON THE PROFILE VIEW AMEND TO READ 'ELEV 412FT' INSTEAD OF 'ELEV  
409FT'  
3)IN THE THE TABLE OF CIRCLING MINIMA AMEND TO READ '1200/(788)'  
INSTEAD OF '1200/(791)'. 07 MAY 12:23 2012 UNTIL PERM. CREATED: 07 MAY 12:27  
2012

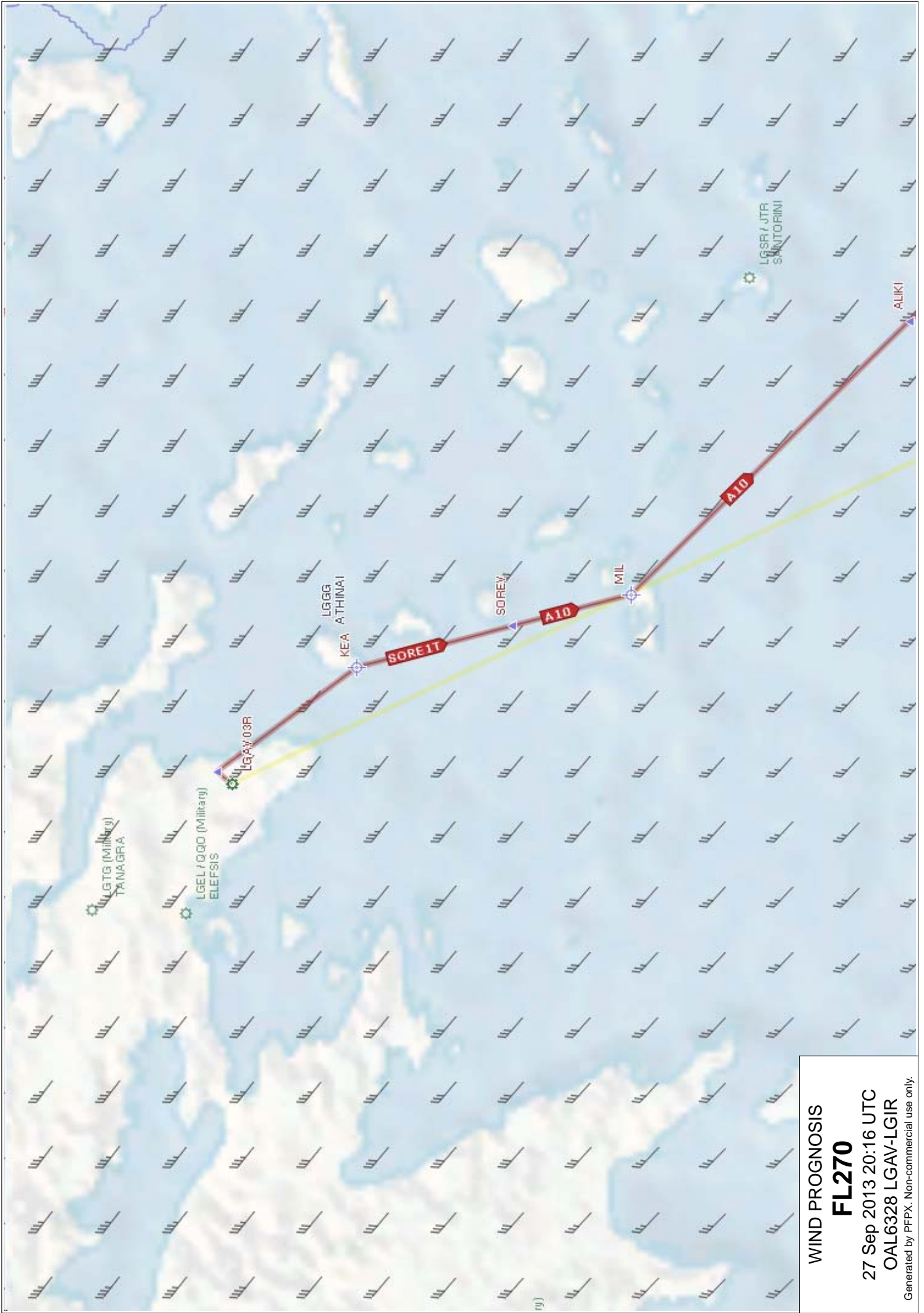


WIND PROGNOSIS  
**FL230**  
 27 Sep 2013 20:16 UTC  
 OAL6328 LGAV-LGIR  
 Generated by PEPX. Non-commercial use only.



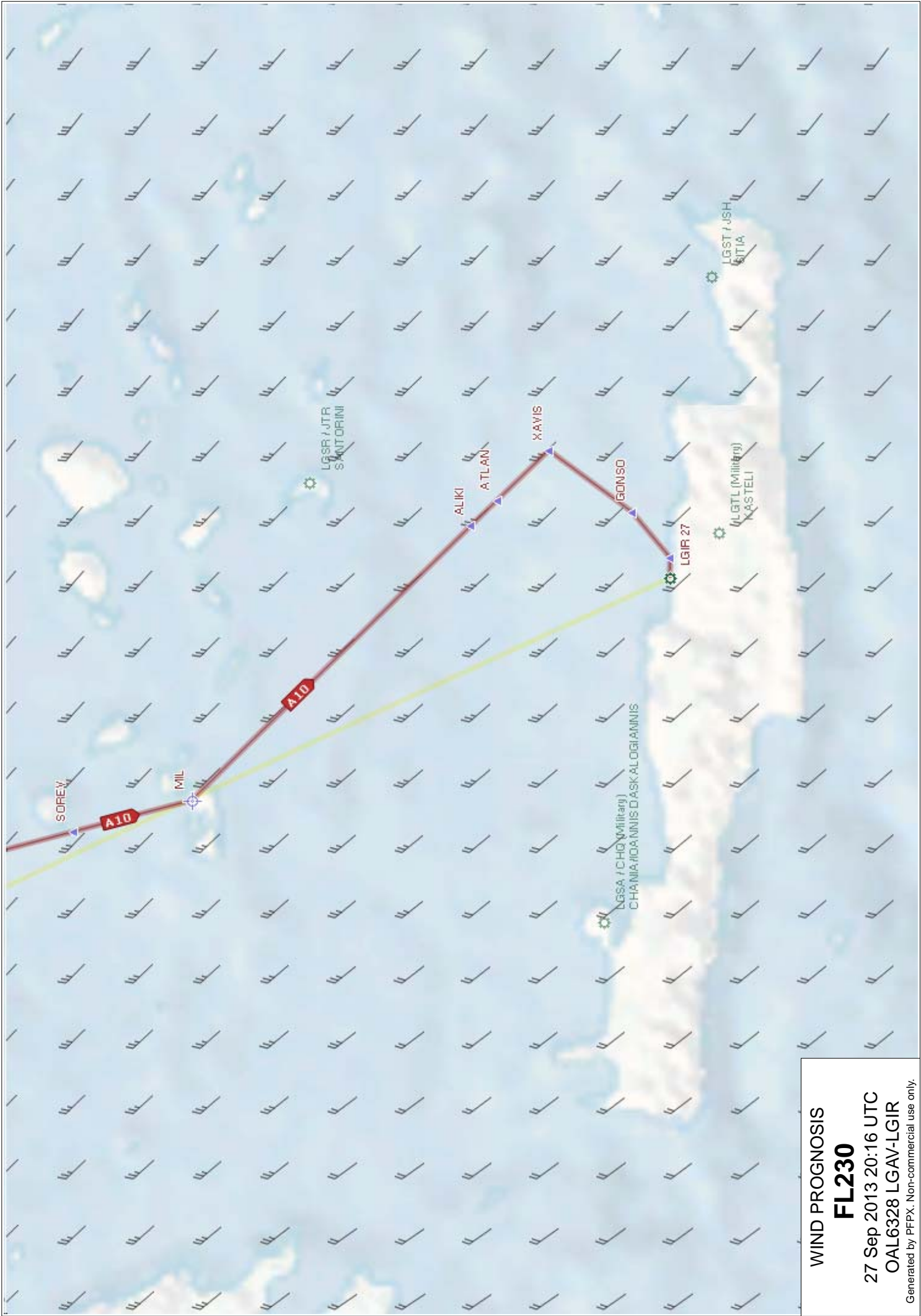


WIND PROGNOSIS  
**FL250**  
 27 Sep 2013 20:16 UTC  
 OAL6328 LGAV-LGIR  
 Generated by PFPX. Non-commercial use only.

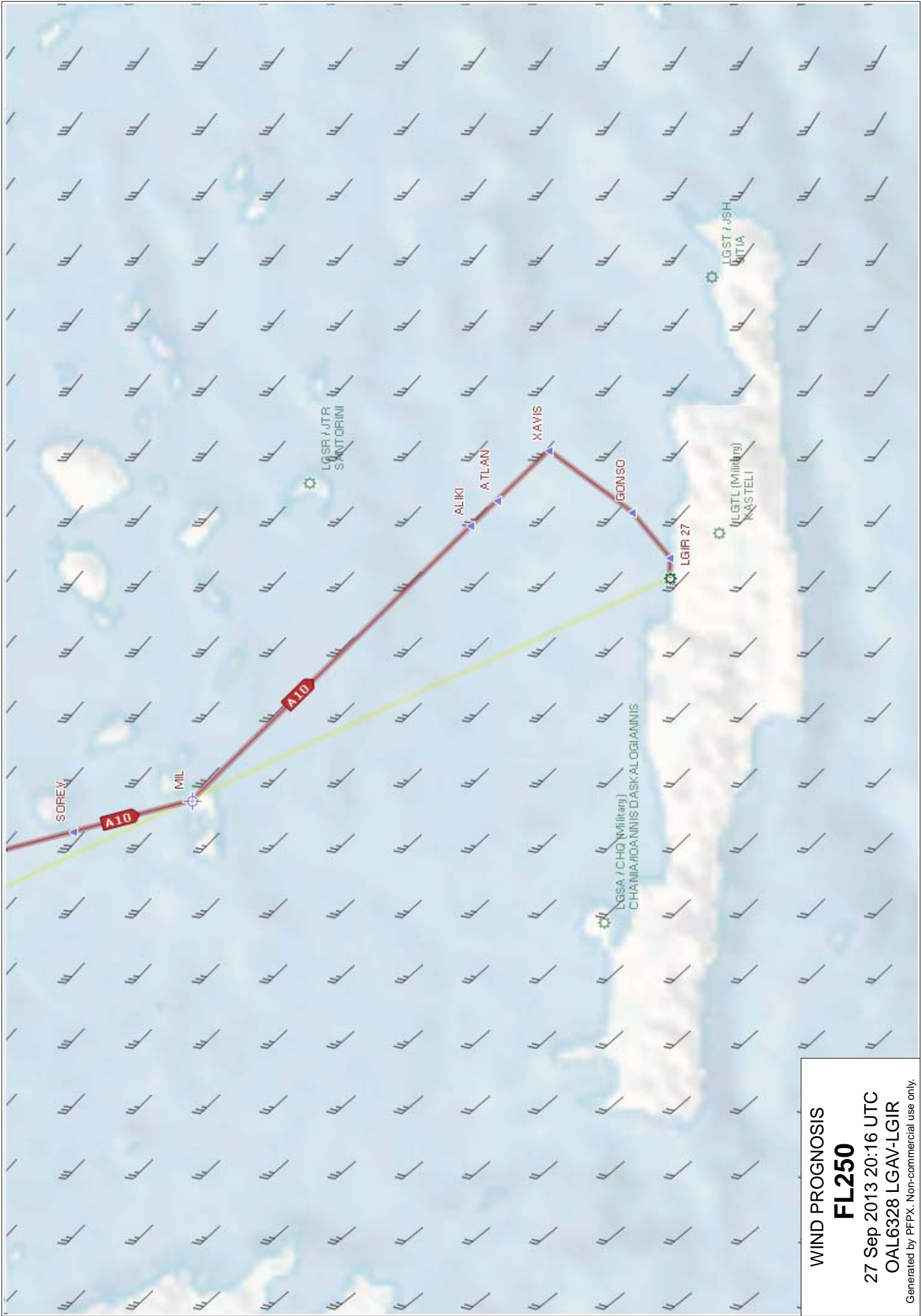


WIND PROGNOSIS  
**FL270**  
 27 Sep 2013 20:16 UTC  
 OAL6328 LGAV-LGIR  
 Generated by PEPX. Non-commercial use only.



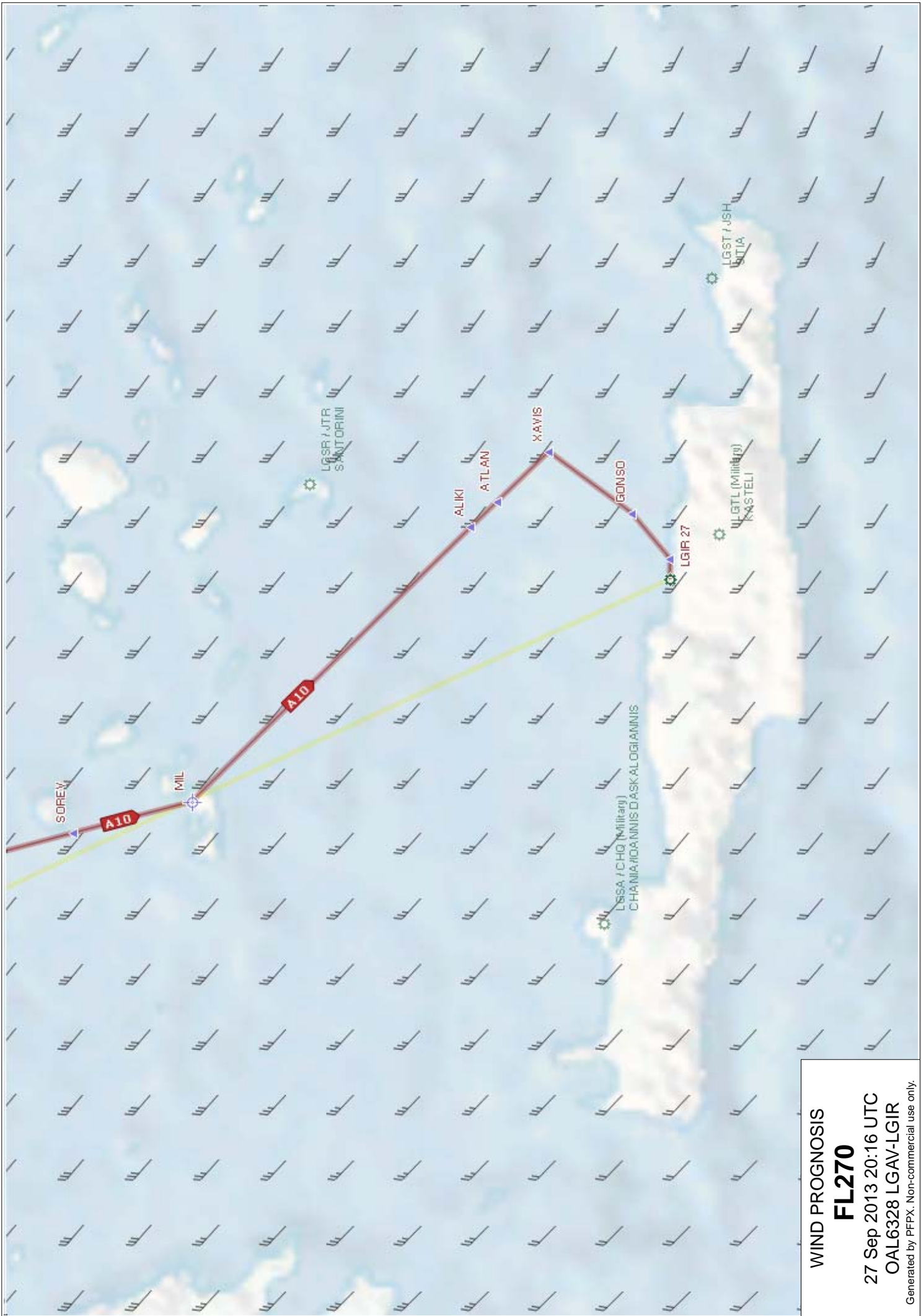


**WIND PROGNOSIS**  
**FL230**  
 27 Sep 2013 20:16 UTC  
 OAL6328 LGAV-LGIR  
 Generated by PFPX. Non-commercial use only.



WIND PROGNOSIS  
**FL250**  
 27 Sep 2013 20:16 UTC  
 OAL6328 LGAV-LGIR  
 Generated by PFPX. Non-commercial use only.





WIND PROGNOSIS  
**FL270**  
 27 Sep 2013 20:16 UTC  
 OAL6328 LGAV-LGIR  
 Generated by PFPX. Non-commercial use only.

PGDE14 EGRR 261800

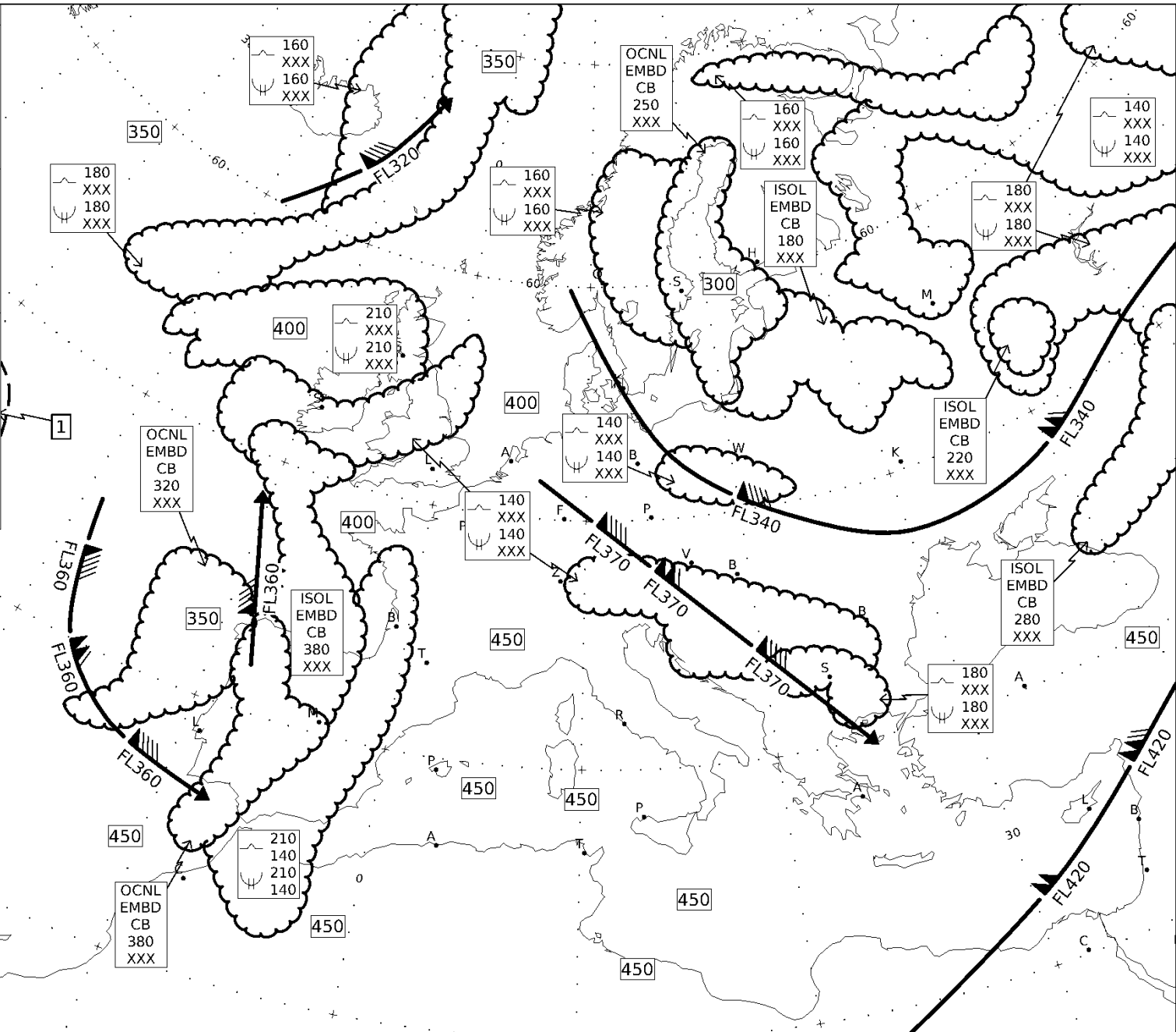
ISSUED BY WAFC LONDON  
 PROVIDED BY WAFC LONDON  
 FIXED TIME PROGNOSTIC CHART  
 ICAO AREA EURO SIGWX  
 FL 100-450  
 VALID 18 UTC 27 SEP 2013

CB IMPLIES TS, GR  
 MOD OR SEV TURB AND ICE

UNITS USED: HEIGHTS IN FLIGHT LEVELS  
 CHECK SIGMET, ADVISORIES FOR  
 TC AND VA, AND ASHTAM AND  
 NOTAM FOR VA

CAT AREAS

1 420  
 290



PGDE14 EGRR 270000

ISSUED BY WAFC LONDON  
 PROVIDED BY WAFC LONDON  
 FIXED TIME PROGNOSTIC CHART  
 ICAO AREA EURO SIGWX  
 FL 100-450  
 VALID 00 UTC 28 SEP 2013

CB IMPLIES TS, GR  
 MOD OR SEV TURB AND ICE

UNITS USED: HEIGHTS IN FLIGHT LEVELS  
 CHECK SIGMET, ADVISORIES FOR  
 TC AND VA, AND ASHTAM AND  
 NOTAM FOR VA

CAT AREAS

1 380  
 280

2 410  
 310

