



Flight Briefing Package

OAL6381 LGMK-LGAV

27 Sep 1915 UTC

OFP #1

MIKONOS
(GREECE)

-

ATHENS/ELEFThERIOS VENIZELOS
(GREECE)

PREPARED BY MICHAIL IONAS

OPS@OAV.GR

27 SEP 2033 UTC

OAL6381 LGMK-LGAV (27 Sep 1915 UTC)

RELEASE DETAILS SX-OBC LGMK-LGAV RELEASE # 2

FUEL PLANNING (KG)		LGMK - LGAV	
TRIP		463	00:23
CONT 5%		75	00:05
ALTN	LGSR	621	00:32
FINAL RESV		451	00:30
MIN T/O		1,610	01:30
TAXI		70	00:10
RELEASE	LGMK	1,680	01:40
REMAINING	LGAV	1,112	01:02

LOAD PLANNING (KG)		PLANNED	LIMIT
PAYLOAD		8,145	
FUEL		1,680	5,318
ZERO FUEL WEIGHT	LIMIT	25,668	26,308
RAMP WEIGHT		27,348	29,665
TAKE-OFF WEIGHT		27,278	29,574
LANDING WEIGHT		26,815	28,123
UNDERLOAD		640	LIM ZFW

OAL6381 LGMK-LGAV (27 Sep 1915 UTC)

OLYMPIC AIR VIRTUAL FLIGHTPLAN - IFR OAL6381 SX-OBC LGMK-LGAV

ALL WEIGHTS IN KILOGRAMS (KG)

STD 27SEP/1915Z

PREPARED 27SEP/2033Z BY MICHAEL IONAS OPS@OAV.GR

 COMMANDER: SPIROS MILONIDIS / PARK LGMK: N/A / PARK LGAV: TBA
 CONTACT DISPATCH CONTROL 131.950 15MIN BEFORE ARRIVAL (AVAILABLE 1730Z-2200Z)
 IF NOT AVAILABLE CONTACT OC/DISPATCH - OAV TEAMSPEAK (AVAILABLE 24H)

OAL6381 OFP 1 SX-OBC/DH8D-Q402 ROUTE: LGMKLGAV01

DEP: LGMK/JMK 34 ELEV 405 FT CRZ SPD: INTER TTL G/C DIST: 73 NM
 ARR: LGAV/ATH 03R ELEV 308 FT INIT ALT: FL160 TTL F/P DIST: 84 NM
 BURN ADJ: 100.0% TTL AIR DIST: 87 NM
 AVG WIND CMP: HD008 KT

ALT: LGSR/JTR 34R ELEV 123 FT 139 NM

CONFIG	DOW	PAX	CARGO	TOTAL	ULOAD LIM	ZFW	TOW	LDW
STANDARD	17523	30	5344	8145	640 ZFW	MAX 26308	29574	28123
						PLN 25668	27278	26815
						ACT

	FUEL	CORR	ENDUR	
TRIP	463	00:23	
CONT 5%	75	00:05	
ALTN LGSR	621	00:32	
FINAL RESV	451	00:30	
MIN T/O	1610	01:30
EXTRA	0	00:00	CAPTAINS SIGNATURE (....)
TAXI	70	00:10	
RELEASE	1680	01:40	I ACCEPT THIS OFP AND I AM FAMILIAR WITH THE PLANNED ROUTE AND AERODROMES

FUEL TANK CAP 5318 KG / MAX EXTRA FUEL 1308 KG LIM BY LDW
 TRIP CORR FOR 500 KG TOW INCR: +3 KG / 500 KG TOW DECR: -3 KG
 2000 FT LOWER: +0 KG / EET 00:24 CLB: HISPEED DES: 285IAS

LGMK/JMK	STD 19:15	ETD 21:00	ACT OFBL	EST T/O 21:10	ACT T/O
LGAV/ATH	STA 19:50	ETA 21:38	ACT ONBL	EST LDG 21:33	ACT LDG
			TTL BLCK		TTL FLT

ATC ROUTE: N0306F160 VARI1C VARI1X VARI2C

ALTERNATE PLANNING

ALTN/RWY	DIST	ALT/FL	COMP	TIME	FUEL	DIFF	ROUTE
LGSR/34R	139	FL190	TL011	00:32	621	-	SORE1T SOREV A10 MIL MIL1B
LGTS/10	210	FL240	HD012	00:48	909	+288	NEVR1T NEVRA Z507 OSMOS OSM01D

AWY	WAYPOINT NAME	MT	ALT TMP	WND/VEL	TAS	REM	FUEL	REM / USED	LEG	ACC
				FREQ	GS	DIST	POSITION		ETO	ATO
	LGMK/34		405				1610 / 70			
	MIKONOS					84	N3726.6 E02521.1/.....		
VARI1C	R299I	261	*CLB			8	1506 / 174	04	00:04	

OAL6381 LGMK-LGAV (27 Sep 1915 UTC)

							77	N3725.1	E02513.4/.....
VARI1C	VARIX	246	*CLB				10	1417 /	263	03 00:07
							67	N3722.8	E02502.1/.....
	*TOC	285	FL160	310/020	306	18	1307 /	373	04	00:11
			-6		287	49	N3727.4	E02441.1/.....	
VARI2C	*TOD	285	FL160	310/020	306	11	1268 /	412	02	00:13
			-6	115.00	286	39	N3731.7	E02429.5/.....	
VARI2C	KEA	284	*DES			9	1247 /	433	02	00:15
				115.00		30	N3733.4	E02418.9/.....	
VARI2C	LGAV/03R	319	308			30	1147 /	533	08	00:23
	ATHENS/ELEFThERI						N3756.6	E02357.7/.....	

OAL6381 LGMK-LGAV (27 Sep 1915 UTC)

WIND INFORMATION - OBS 271200

(CLIMB) (DESCENT)
FL150 311/020 -5 FL150 311/020 -5
FL120 317/016 +1 FL120 316/016 +1
9000 326/012 +6 9000 323/012 +6
6000 338/009 +12 6000 334/009 +12
3000 348/007 +17 3000 340/006 +17

END FLIGHTPLAN OAL6381 SX-OBC LGMK-LGAV 27SEP2013

OAL6381 LGMK-LGAV (27 Sep 1915 UTC)

(FPL-OAL6381-IS
-DH8D/M-SDE2E3FGRY/H
-LGMK2100
-N0306F160 VARIX
-LGAV0023 LGSR
-PBN/B2B3B4D2D30203S1 DOF/130927 REG/SX0BC RVR/300 OPR/OLYMPIC AIR VIRTUAL
PER/C
-E/0130)

OAL6381 LGMK-LGAV (27 Sep 1915 UTC)

WEATHER BRIEFING - GENERATED 27 SEP 2013 20:33 UTC

LGMK LGAV LGSR LGTS

ORIGIN: LGMK/JMK (MIKONOS, GREECE)

LGMK 271750Z 02004KT 9999 FEW015 22/17 Q1012
LGMK 271700Z 2718/2803 35008KT 9999 FEW015

DESTINATION: LGAV/ATH (ATHENS/ELEFATHERIOS VENIZELOS, GREECE)

LGAV 271920Z 27003KT CAVOK 21/15 Q1014
LGAV 271700Z 2718/2818 VRB05KT 9999 FEW025

ALTERNATE: LGSR/JTR (SANTORINI, GREECE)

LGSR 271920Z 25006KT 9999 FEW025 22/17 Q1013 NOSIG
LGSR 271700Z 2718/2803 31010KT 9999 FEW020

ALTERNATE: LGTS/SKG (THESSALONIKI/MAKEDONIA, GREECE)

LGTS 271920Z 12004KT 9999 FEW025 21/12 Q1012 NOSIG RMK FEW180
LGTS 271700Z 2718/2818 VRB03KT 9999 SCT030
 BECMG 2810/2812 14008KT FEW030

OAL6381 LGMK-LGAV (27 Sep 1915 UTC)

NOTAM BRIEFING - GENERATED 27 SEP 2013 20:33 UTC

LGMK LGAV LGSR LGTS

ORIGIN: LGMK/JMK (MIKONOS, GREECE)

[EXPIRED 27 SEP 2013 20:14 UTC]

A1574/13

LGMK TOWER BEACON UNSERVICEABLE. 15 SEP 11:41 2013 UNTIL 30 SEP 23:59 2013.

CREATED:

15 SEP 11:44 2013

A0707/07

REF AIP GR VOLII PAGE LGMK IAC 1 16 FEB 2006

1.THE ARRIVAL PROCEDURE(CIRCLING) TO RWY 16 OF LGMK AD SHALL BE ALLOWED ONLY DURING DAYTIME DUE TO MOUNTAINOUS TERRAIN AND ABSENCE OF OBSTACLE LIGHTING .

2.ATTENTION HAS TO BE GIVEN TO THE CURRENT WIND CONDITIONS FROM ALL AIRCRAFT OPERATORS IN ORDER TO AVOID ANY DIVERSION. 13 APR 09:25 2007 UNTIL PERM. CREATED: 13 APR 09:30 2007

B0797/13

AERODROME FLOODLIGHT PYLON NO1 AT THE NOTHERN PART OF THE

APRON OUT OF SERVICE. 16 SEP 09:14 2013 UNTIL 16 OCT 23:59 2013. CREATED: 16 SEP 09:15 2013

B0786/13

LGMK/MIKONOS:AERODROME HRS OF SERVICES AS FLW :

FROM 13/09/2013 TILL 26/10/2013

A.FROM 13/09 TILL 30/09

MON,TUE,THU,FRI,SAT 0300-1715

WED 0300-1900

SUN 0300-1915

B.FROM 01/10 TILL 26/10

MON 0800-1715

TUE 0700-1500

WED 0630-1715

THU,FRI 0700-1715

SAT 0800-1500

SUN 0530-1715

NOTES:

1.-ON 13/09 FRI 0245-2030

2.-ON 14/09 SAT 0300-2030

3.-ON 15/09 SUN 0300-2120

4.-ON 20/09 FRI 0300-1845

5.-ON 06/10 SUN 0530-1915

7.-ON 07/10 MON 0700-1715. 13 SEP 10:48 2013 UNTIL 26 OCT 23:59 2013. CREATED: 13 SEP 10:52 2013

B0756/13

DUE TO MIKONOS VOR/DME MKN 110MHZ/CH37X LIMITATIONS (SEE NOTAM

B0755/13)STARS OF RWY34: PIDAX 1A, PEROK 1A, NITSA 1A, DIDIS 1A

VARIX 1P AND VARIX 1Q SHALL BE USED WITH MINIMUM ALTITUDE

5500FT(QNH) INSTEAD OF 3500FT(QNH). 03 SEP 10:04 2013 UNTIL 03 DEC 22:00 2013.

OAL6381 LGMK-LGAV (27 Sep 1915 UTC)

CREATED: 03 SEP 10:06 2013

B0755/13

MIKONOS VOR/DME MKN 110MHZ/CH37X OUT OF SERVICE AT SECTOR BTN RAD
080-125 CW. 03 SEP 09:11 2013 UNTIL 03 DEC 22:00 2013. CREATED: 03 SEP 09:14
2013

B0754/13

PYROTECHNIC SIGNALS ARE NOT AVAILABLE AT LGMK ATC TOWER. 03 SEP 09:05 2013 UNTIL
03 DEC 22:00 2013. CREATED: 03 SEP 09:08 2013

B0752/13

LGMK:MOTOR AMBULANCE OUT OF SERVICE. 03 SEP 08:44 2013 UNTIL 03 DEC 22:00 2013.
CREATED: 03 SEP 08:47 2013

B0740/13

LGMK/MYKONOS:RTIL RWY16 U/S. 02 SEP 08:10 2013 UNTIL 30 SEP 23:59 2013. CREATED:
02 SEP 08:14 2013

B0630/13

LGMK/MIKONOS OBSTACLE LIGHTS OF AERODROME FLOODLIGHTS PYLONS NO
1,2,3,4,5 OUT OF SERVICE. 22 JUL 10:16 2013 UNTIL 22 OCT 23:59 2013. CREATED:
22 JUL 10:22 2013

B0259/13

MYKONOS TRAINING FLIGHTS ARE NOT ACCEPTED WITHIN MYKONOS TMA
UNLESS PRIOR PERMISSION IS OBTAINED BY MYKONOS APP(CONTACT TEL
2289079004). 01 APR 09:21 2013 UNTIL 26 OCT 23:59 2013. CREATED: 01 APR 09:26
2013

B0639/08

REF NOTAM B0135/08, ON AIP GREECE VOLII PAGE LGMK 2/ 31 JAN
2007/01,
1. WHEN EXECUTING STAR LETSO 1A, BETWEEN LETSO AND R083MKN/10DME YOU
MAY ENCOUNTER DISCREPANCIES IN MKN DME READINGS.
2. STAR LETSO 1B IS SUSPENDED. 16 JUL 08:04 2008 UNTIL PERM. CREATED: 16 JUL
08:05 2008

M0255/13

REF MAIP GREECE VOL-2B EFF 01 JUN 2013 ON PAGES M-1-2 AND M-1-3:
1. STAR LETSO 1B IS SUSPENDED.
2. WHEN EXECUTING STAR LETSO 1A, BETWEEN LETSO AND R-083 MKN/10 DME
YOU MAY ENCOUNTER DISCREPANCIES IN MKN READINGS. 04 JUN 08:00 2013 UNTIL PERM.
CREATED: 04 JUN 08:33 2013

DESTINATION: LGAV/ATH (ATHENS/ELEFThERIOS VENIZELOS, GREECE)

[EXPIRED 27 SEP 2013 20:14 UTC]

A1641/13

KEA VOR 'KEA' 115.00MHZ ON TEST DO NOT USE. KEA DME CH97X (ID:KEA)
NORMALLY OPERATING. 23 SEP 09:27 2013 UNTIL 30 SEP 11:30 2013. CREATED: 23 SEP
09:30 2013

A1640/13

CONCENTRATION OF BIRDS INCLUDING
FALCONS, BUZZARDS, STARLINGS, SWALLOWS AND OTHER SMALL PASSERINES IN
THE VICINITY OF THE AIRPORT.
CAUTION ADVISED. 01 OCT 00:01 2013 UNTIL 30 NOV 23:59 2013. CREATED: 23 SEP
08:32 2013

OAL6381 LGMK-LGAV (27 Sep 1915 UTC)

A1307/13

REF AIP GREECE AIRAC AMDT 8-13(WEF 22 AUG 2013) AD2-LGAV-4,
SECTION 2.12,COL 5 LINE 4,
AMEND TO READ RWY21R END COORDINATES AS FOLLOWS:
375517,46N0235507,99E. 22 AUG 00:01 2013 UNTIL PERM. CREATED: 31 JUL 08:47 2013

A1287/13

CONCENTRATION OF BIRDS INCLUDING FALCONS,DOVES,STORKS,
SWALLOWS AND SWIFTS IN THE VICINITY OF THE AIRPORT.
CAUTION ADVISED. 01 AUG 00:00 2013 UNTIL 30 SEP 23:59 2013. CREATED: 29 JUL
09:35 2013

A1243/13

ALL GENERAL AVIATION FLIGHTS WITH MTOW MORE THAN 5700 KG SHALL
SEND A SCHEDULE MOVEMENT ADVICE (SMA) MESSAGE TO THE AIRPORT
SCHEDULE FACILITATOR IN A TURNAROUND FORMAT ACCORDING TO IATA
STANDARD SCHEDULE INFORMATION MANUAL CHAPTER 6.10.
SMA SHALL BE SENT DURING WORKING HOURS 0830-1600 LOCAL TIME VIA
SITA FAX OR E-MAIL WITH COPIES TO SCHEDULING AND PLANNING DEPT AND
TO AIRPORT SERVICES OPERATION CENTER (ASOC).
CANCELLATION MESSAGES SHALL BE SENT AS SOON AS FLIGHTS WILL NOT
OPERATE.
ABOVE PROCEDURE DOES NOT APPLY TO HELICOPTERS VIP MEDICAL AND SAR
FLIGHTS.
FOR GENERAL AVIATION FLIGHTS WITH MTOW LESS THAN 5700 KG AIP GREECE
AD2 2.20.1.2 APPLIES.
CONTACT DETAILS :
SCHEDULE FACILITATOR SITA:ATHHAXH,
TEL:21035361189/190/811/813/815/816, FAX:2103537418
E-MAIL : ESAGOS-HSCA(AT)ATHENSAIRPORT.GR
LGAV ASOC SITA: ATHIAXH, TEL: 2103540000, FAX: 2103540095
E-MAIL: ASOC-SENIOR-SRV(AT)AIA.GR
LGAV SCHEDULING AND PLANNING DEPT SITA: ATHSCXH, TEL: 2103531425,
FAX: 2103532254, E-MAIL: SCHED-PLANNING (AT) AIA.GR. 23 JUL 09:36 2013 UNTIL
30 SEP 23:59 2013. CREATED: 23 JUL 09:39 2013

A1190/13

OBSTACLE LIGHTS ON BOYATI ATHINAI ERT RADIO MAST OUT OF SERVICE.
OBST COORDINATES (NOT IN WGS 84) 380904N0235138E. REF AIP-GREECE ENR
5.4-2. AND ENR 1.1.7.6. 14 JUL 12:00 2013 UNTIL 31 DEC 23:59 2013. CREATED:
14 JUL 11:37 2013

A1020/13

REF. AIP GREECE AD2-LGAV-9 PARAGR 2.20.2.1-J 20 SEP 2012
ADD B 747-800 TO EXISTING A/C TYPES. 14 JUN 05:27 2013 UNTIL PERM. CREATED:
14 JUN 05:33 2013

A1018/13

REF AIP GREECE AD-2-LGAV-STAR-3 28 JUN 2012, IN THE HOLDING
PATTERN AT KRO VOR/DME, ON THE SEGMENT NEVRA-KRO VOR/DME, ON THE
SEGMENT KEPIR-KRO VOR/DME AND ON THE SEGMENT VARIX-KRO VOR/DME,
AMEND TO READ 7000FT INSTEAD OF 6000FT. 14 JUN 05:21 2013 UNTIL PERM. CREATED:
14 JUN 05:25 2013

A1016/13

REF AIP GREECE, THE PROCEDURES DESCRIBED IN THE FOLLOWING PAGES
ARE SUSPENDED.

1. AD2-LGAV-SID-2 28 JUN 2012
2. AD2-LGAV-SID-7 28 JUN 2012
3. AD2-LGAV-SID-10 28 JUN 2012

OAL6381 LGMK-LGAV (27 Sep 1915 UTC)

4. AD2-LGAV-SID-12 28 JUN 2012
5. AD2-LGAV-STAR-2 28 JUN 2012. 14 JUN 05:08 2013 UNTIL PERM. CREATED: 14 JUN 05:17 2013

A0997/13

LGAV/EL VENIZELOS/INTL:AT AREA BEYOND 10NM AND ALTITUDE BELOW 4000FT FOR ANGLES GREATER THAN 18 DEGREES FROM THE LOCALIZER CENTER LINE THE ILS RWY 03R (I-ATR) IS OUT OF USE DUE TO FALSE CAPTURE. 12 JUN 07:59 2013 UNTIL PERM. CREATED: 12 JUN 08:45 2013

A0893/13

REFERENCE AIP GREECE AD2-LGAV-SID-1 28JUN 2012 ON THE DESCRIPTIONS OF SIDS RWY 03R:

1)AT THE END OF EACH DESCRIPTION OF THE SIDS NEVRA1J,KEPIR1J,VARIX1J,KEA1J,GENDO1J,SOREV2J,VELOP2J,ASTOV2J,NEMES3J,RILIN2J,PIKAD2J,RIMAX1J,ABLON2J, DELETE:SEE NOTE 1.
2)AT THE END OF THE DESCRIPTION OF BIBEX1J, HAND AMEND TO READ:SEE NOTE, INSTEAD OF:SEE NOTE 1 AND 2.
3)AT THE END OF DESCRIPTIONS OF SIDS RWY 03R:
A. DELETE NOTE 1:DO NOT CLIMB ABOVE 4000FT(QNH)UNTIL REACHING 14DME/KRO,UNLESS CLEARED BY ATC.
B. HAND AMEND TO READ NOTE:THIS SID SHOULD BE USED FOR DESTINATION PAROS AIRPORT(LGPA),INSTEAD OF:NOTE 2:THIS SID SHOULD BE USED FOR DESTINATION PAROS AIRPORT(LGPA).
4.AT EACH DESCRIPTIOPN OF THE SIDS KEA1J, BIBEX1J,GENDO1J,SOREV2J,VELOP2J,ASTOV2J,NEMES3J,RILIN2J,PIKAD2J, RIMAX1J,ABLON2J, HAND AMEND TO READ:CLIMB ON RADIAL 048 SAT TO 1100FT(QNH).AT 1100FT(QNH)TURN RIGHT,INTERCEPT AND FOLLOW RADIAL 266 KRO TO RADIAL 266 KRO/14DME FIX NOT ABOVE 4000FT(QNH) UNLESS OTHERWISE INSTRUCTED BY ATC,INSTEAD OF: CLIMB ON RADIAL 048 SAT TO1100FT(QNH).AT 1100FT(QNH) TURN RIGHT, INTERCEPT AND FOLLOW RADIAL 266 KRO CLIMBING TO 4000FT(QNH).MAINTAIN 4000FT(QNH) UNTIL PASSING 14DME KRO. 27 MAY 09:48 2013 UNTIL PERM. CREATED: 27 MAY 09:53 2013

A0716/13

REFERENCE AIP GREECE AD2-LGAV:

1)ON AD2-LGAV-SID-1 CANCEL THE SID NEMES 3J 2)ON AD2-LGAV-SID-4 CANCEL THE SID'S NEMES 1T AND GERMI 1T 3)ON THE AD2-LGAV-SID-5 CANCEL THE SID NEMES 3L 4)ON THE AD2-LGAV-SID-9 CANCEL THE SID NEMES 3G
5)ON THE AD2-LGAV-SID-11 CANCEL THE SID NEMES 3F. 29 APR 07:33 2013 UNTIL PERM. CREATED: 29 APR 07:35 2013

A0518/13

REF AIP GREECE PART 3 AD2-LGAV-2.21.1.3 RUNWAY USE SYSTEM
ADDITIONAL HOURS OF LGAV - NOISE ABATMENT PROCEDURES AS FOLLOW :
31 MAR TILL 27 OCT 2013 DAILY 12:00-15:00. 31 MAR 02:00 2013 UNTIL 27 OCT 02:00 2013. CREATED: 29 MAR 04:55 2013

A0103/12

ELEFThERIOS VENIZELOS AIRPORT HAS BEEN APPROVED BY HCAA TO BE USED BY B747-800 AIRCRAFT AS ALTERNATE OR FOR A LIMITED NUMBER OF FLIGHTS. THE EXISTING ILS PROCEDURES HAVE BEEN DESIGNED TAKING INTO CONSIDERATION THE COLLISION RISK MODEL. 24 JAN 08:19 2012 UNTIL PERM. CREATED: 24 JAN 08:40 2012

ALTERNATE: LGSR/JTR (SANTORINI, GREECE)

[EXPIRED 27 SEP 2013 20:14 UTC]

OAL6381 LGMK-LGAV (27 Sep 1915 UTC)

B0628/13

RTIL RWY 16L U/S. 21 JUL 15:29 2013 UNTIL 31 DEC 23:59 2013. CREATED: 21 JUL 15:30 2013

B0599/13

RVR U/S. 05 JUL 08:21 2013 UNTIL 31 DEC 22:00 2013. CREATED: 05 JUL 08:23 2013

B0508/13

BIRD CONCENTRATION (SEAGULLS) IN MOVEMENT AREA. CAUTION ADVISED. 10 JUN 11:22 2013 UNTIL 31 OCT 23:59 2013. CREATED: 10 JUN 11:24 2013

B0506/13

TRAINING FLIGHTS TO SANTORINI AIRPORT MUST OBTAIN PERMISSION AT LEAST THREE HOURS PRIOR ETA. FOR PERMISSION CONTACT SANTORINI APP/TWR AT TEL. NUM :+302286028404, OR +302286028448. 11 JUN 03:00 2013 UNTIL 30 SEP 21:00 2013. CREATED: 10 JUN 06:42 2013

B0437/13

DUE TO LIMITED PARKING POSITIONS ALL GENERAL AVIATION FLIGHTS INTENDING TO LAND AT SANTORINI AIRPORT MUST OBTAIN PRIOR PERMISSION (PPR) FROM THE AIRPORT AUTHORITY AT LEAST 24HR PRIOR ETA.

THE APPLICATION MUST INCLUDE:

1. AIRCRAFT REGISTRATION, TYPE, MTOW AND CALLSIGN
2. DATE OF ARRIVAL, ETA AND AIRPORT OF ORIGIN
3. DATE OF DEPARTURE, ETD AND DESTINATION AIRPORT
4. HANDLING AGENT
5. COMMUNICATION DETAILS (FAX, E-MAIL)
6. OPERATOR (IF APPLICABLE)

THE APPLICATION MUST BE ADDRESSED TO THE AIRPORT AUTHORITY AND SENT BY FAX(++302286033349) OR E-MAIL KASRGAE(AT)HCAA.GR.

THE AIRPORT AUTHORITY MUST ALSO BE NOTIFIED IN IN CASE OF SCHEDULE CHANGES OR CANCELATIONS OF PREVIOUSLY AUTHORIZED FLIGHTS. 01 JUN 00:01 2013 UNTIL 30 SEP 23:59 2013. CREATED: 24 MAY 07:40 2013

B0387/13

LGSR/SANTORINI:AERODROME HOURS OF SERVICE AS FLW:
FROM 09/05/2013 TILL 26/10/2013

A.FROM 09/05 TILL 28/05
MON,THU,FRI 0230-1800
TUE,WED 0230-1930
SAT 0230-1900
SUN 0230-2230

B.FROM 29/05 TILL 30/09
EUERY DAY 0001-2400

C.FROM 01/10 TILL 28/10
MON,WED,THU,FRI 0230-1800
TUE 0230-1930
SAT,SUN 0230-1900

NOTES:

- 1.ON 10/05 FRI 0700-1800
- 2.ON 18/05,25/5,05/10,12/10 SAT 0230-2030. 09 MAY 10:47 2013 UNTIL 26 OCT 23:59 2013. CREATED: 09 MAY 10:51 2013

M0405/13

SANTORINI TACAN SAN CHAN 111X OPERATIONAL AWAITING FLIGHT CHECK. 27 SEP 10:01 2013 UNTIL 15 OCT 23:59 2013. CREATED: 27 SEP 10:16 2013

OAL6381 LGMK-LGAV (27 Sep 1915 UTC)

M0388/13

LGSR : NORTH ARRESTING GEAR OF RUNWAY 34R-16L IS REMOVED. 17 SEP 06:59 2013
UNTIL
17 DEC 15:00 2013. CREATED: 17 SEP 07:05 2013

M0188/13

HAF SERVICES WILL BE PROVIDED
A. EVERY DAY DURING DAYLIGHT AND THE REST HOURS OF THE DAY 30 MIN
PRIOR NOTICE.
B. WEEKEND AND PUBLISHED HOLIDAYS AFTER 30 MIN PRIOR NOTICE. 23 APR 07:11 2013
UNTIL 31 DEC 21:59 2013. CREATED: 23 APR 07:30 2013

M0408/08

SINK TYPE ARRESTING GEAR CABLE INSTALLED AND OPERATES AT THE
BEGINNING OF RWY 34R, DEFINED AS THE SOUTH ARRESTING GEAR OF RWY
34R/16L. 28 AUG 12:18 2008 UNTIL PERM. CREATED: 28 AUG 12:23 2008

ALTERNATE: LGTS/SKG (THESSALONIKI/MAKEDONIA, GREECE)

[EXPIRED 27 SEP 2013 20:13 UTC]

A1485/13

THESSALONIKI/MAKEDONIA/INTL:LIGHTS OF SIGNIFICANT LIGHTED
OBSTACLES IN THE VCY OF MAKEDONIA AP (AS LISTED IN ITEM 40 AND 41 OF
AIP GREECE AD 2 LGTS 2.23.3 AND ON TERMINAL AREA CHART-VFR ROUTES
MAKEDONIA TMA) 3KM WEST OF THE AP U/S (RADIO BROADCASTING AERIALS AT
PERAIA). 31 AUG 08:41 2013 UNTIL 31 DEC 23:59 2013. CREATED: 31 AUG 08:42 2013

A1484/13

LGTS AVGAS 100LL NOT AVAILABLE. 31 AUG 07:30 2013 UNTIL 31 DEC 23:59 2013.
CREATED:
31 AUG 08:40 2013

A1329/13

LGTS:PART OF RWY 16/34 BETWEEN 1800 METERS AND 1950 METERS FROM
THRESHOLD OF RWY 16 MAY BE SLIPPERY WHEN WET. 05 AUG 09:20 2013 UNTIL 31 DEC
07:30 2013. CREATED: 05 AUG 09:45 2013

A1177/13

REF AIP GREECE AD.2-LGTS-SID-1 ON SECOND PAGE OF AD2-LGTS-SID-1
SECTION GENERAL PARAGRAPH 3,AMEND TO READ PDG (PROCEDURE DESING
GRADIENT) 7.6 PER CENT(462FT/NM) INSTEAD OF 6.0 PER CENT (365FT/NM). 10 JUL
07:31 2013 UNTIL PERM. CREATED: 10 JUL 07:39 2013

A1116/13

TWY LINK J AND PART OF TWY F FROM HOLDING POINT RWY10 TO TWY A
CLOSED DUE WIP. 01 JUL 18:00 2013 UNTIL 31 DEC 23:59 2013. CREATED: 01 JUL 18:04
2013

A1105/13

LIGHTING OF TWY F PART BETWEEN TWY A TO THE HOLDING POINT OF RWY
28 OPERATES EVERY SECOND LAMP. 29 JUN 08:31 2013 UNTIL 31 DEC 06:30 2013.
CREATED:
29 JUN 08:39 2013

A0755/13

FISKA VOR FSK 116.4MHZ OUT OF SERVICE. 10 MAY 07:33 2013 UNTIL 31 DEC 12:00
2013.
CREATED: 10 MAY 07:38 2013

OAL6381 LGMK-LGAV (27 Sep 1915 UTC)

A0754/13

THESSALONIKI/ MAKEDONIA ILS/DME RWY10 (IMAK) 109.5MHZ/CH32X OUT OF SERVICE. 10 MAY 07:28 2013 UNTIL 31 DEC 12:00 2013. CREATED: 10 MAY 07:32 2013

A0747/13

REF AIP GREECE,AD2-LGTS-ADC HAND AMEND TO INCLUDE TWO(2) HOT SPOTS WITH RELATED TEXT AS FOLLOWS:

- 1.HS1 INTERSECTION OF RWYS:INTERSECTING RWYS WITH NEITHER SIGNAGE NOR MARKING TO WARN AGAINST ENTRY TO RWY.
 - 2.HS2 INTERSECTION OF TWYS F,E AND L:WIDE OPENING.
- WHERE APPLICABLE MAKE SURE OF CORRECT TURN FROM APRON TO TWY F BEFORE RWY 10/28. 08 MAY 06:00 2013 UNTIL PERM. CREATED: 08 MAY 06:14 2013

A0173/13

RWY 10/28 AND TLINKS F1 AND F2 CLOSED DUE TO WIP.
PART OF RWY 10/28 FROM TLINK N TO TWY A IS AVAILABLE ONLY FOR A/C TAXIING. 01 FEB 15:34 2013 UNTIL 30 SEP 12:30 2013. CREATED: 01 FEB 15:35 2013

A1584/12

CAUTION ADVISED ON TWY A DUE TO PAVEMENT DEFORMATION LYING APPROXIMATELY 160M FROM HOLDING POINT OF RWY 34,EAST OF THE TWY CENTERLINE. 09 OCT 08:00 2012 UNTIL 30 SEP 12:00 2013. CREATED: 09 OCT 08:59 2012

A1582/08

THE USE OF THE FOLLOWING SIDS IS SUSPENDED:

- 1.ALIKO 1B (REF AIP GREECE VOLII PAGE LGTS 15, 08 JUL 2004/3)
- 2.ALIKO 1A (REF AIP GREECE VOLII PAGE LGTS 17, 08 JUL 2004/3)
- 3.ALIKO 1C (REF AIP GREECE VOLII PAGE LGTS 18, 08 JUL 2004/3)
- 4.ALIKO 1E (REF AIP GREECE VOLII PAGE LGTS 20, 08 JUL 2004/3. 07 AUG 09:28 2008 UNTIL PERM. CREATED: 07 AUG 07:38 2008

A1581/08

THE USE OF THE FOLLOWING STARS IS SUSPENDED:

- 1.FSK 1F, ODIKO 1L (REF AIP GREECE VOLII PAGE LGTS 10, 08 JUL 2004/3)
- 2.FSK 1F, ODIKO 1F (REF AIP GREECE VOLII PAGE LGTS 11, 08 JUL 2004/3)
- 3.FSK 3P, ODIKO 1P (REF AIP GREECE VOLII PAGE LGTS 12, 08 JUL 2004/3)
- 4.FSK 3H, ODIKO 1H (REF AIP GREECE VOLII PAGE LGTS 13, 08 JUL 2004/3)
- 5.FSK 3D, ODIKO 1D (REF AIP GREECE VOLII PAGE LGTS 14, 08 JUL 2004/3. 07 AUG 09:26 2008 UNTIL PERM. CREATED: 07 AUG 07:37 2008

M0256/13

REF MAIP GREECE VOL-2B EFF 01 JUN 2013 THE USE OF THE FOLLOWING SIDS IS SUSPENDED:

- 1.ALIKO 1C ON PAGE T-2-18
- 2.ALIKO 1B ON PAGE T-2-21
- 3.ALIKO 1E ON PAGE T-2-25
- 4.ALIKO 1A ON PAGE T-2-27. 04 JUN 08:00 2013 UNTIL PERM. CREATED: 04 JUN 08:42 2013

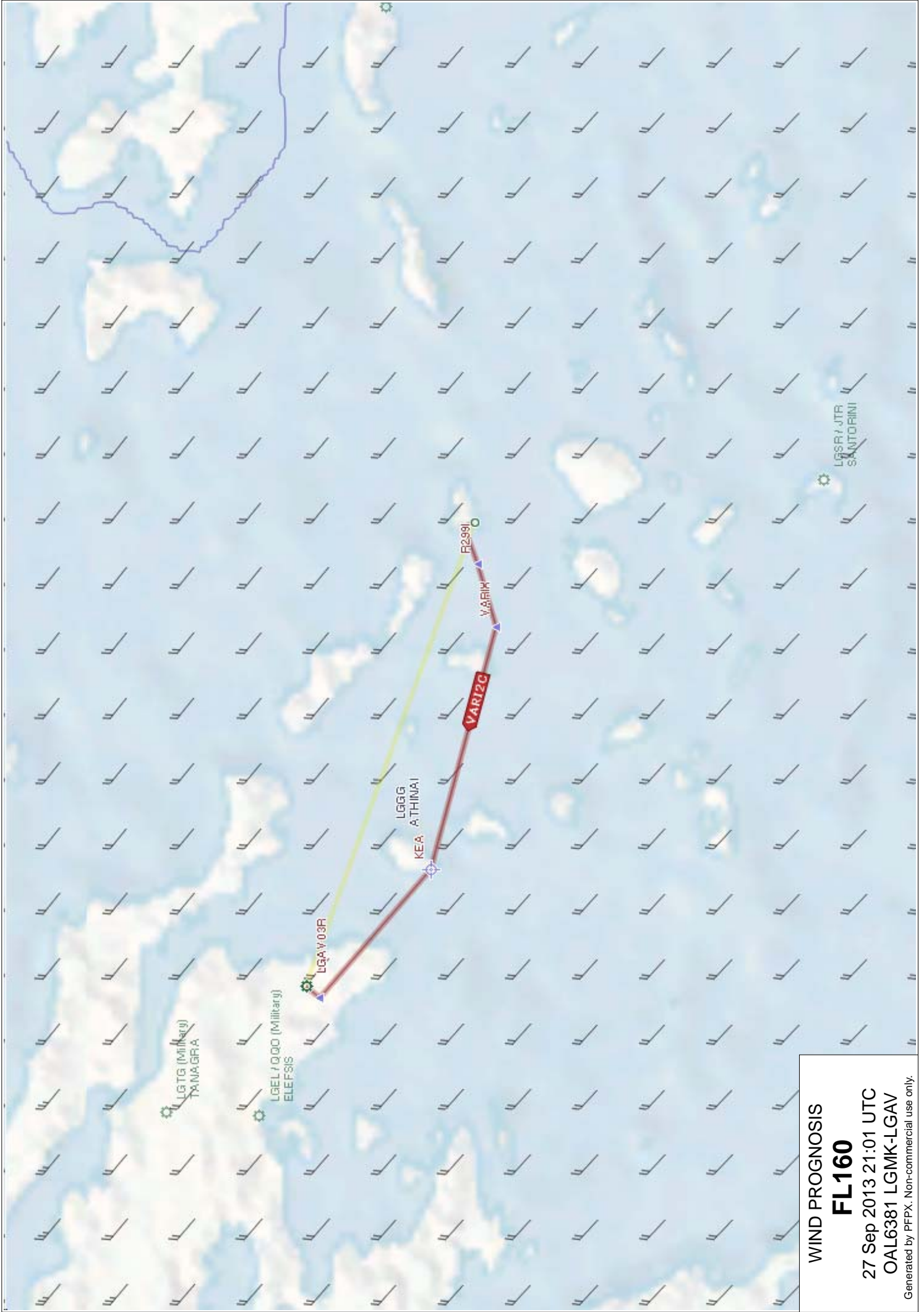
M0633/12

REF MAIP GREECE VOL-2B EFF 01 DEC 2012 THE USE OF THE FOLLOWING STARS IS SUSPENDED:

- 1.FSK 3D,ODIKO 1D ON PAGE T-2-2
- 2.FSK 1F,ODIKO 1F ON PAGE T-2-3
- 3.FSK 1F,ODIKO 1L ON PAGE T-2-4
- 4.FSK 3H,ODIKO 1H ON PAGE T-2-5
- 5.FSK 3P,ODIKO 1P ON PAGE T-2-6. 05 DEC 06:24 2012 UNTIL PERM. CREATED: 05 DEC

OAL6381 LGMK-LGAV (27 Sep 1915 UTC)

07:08 2012



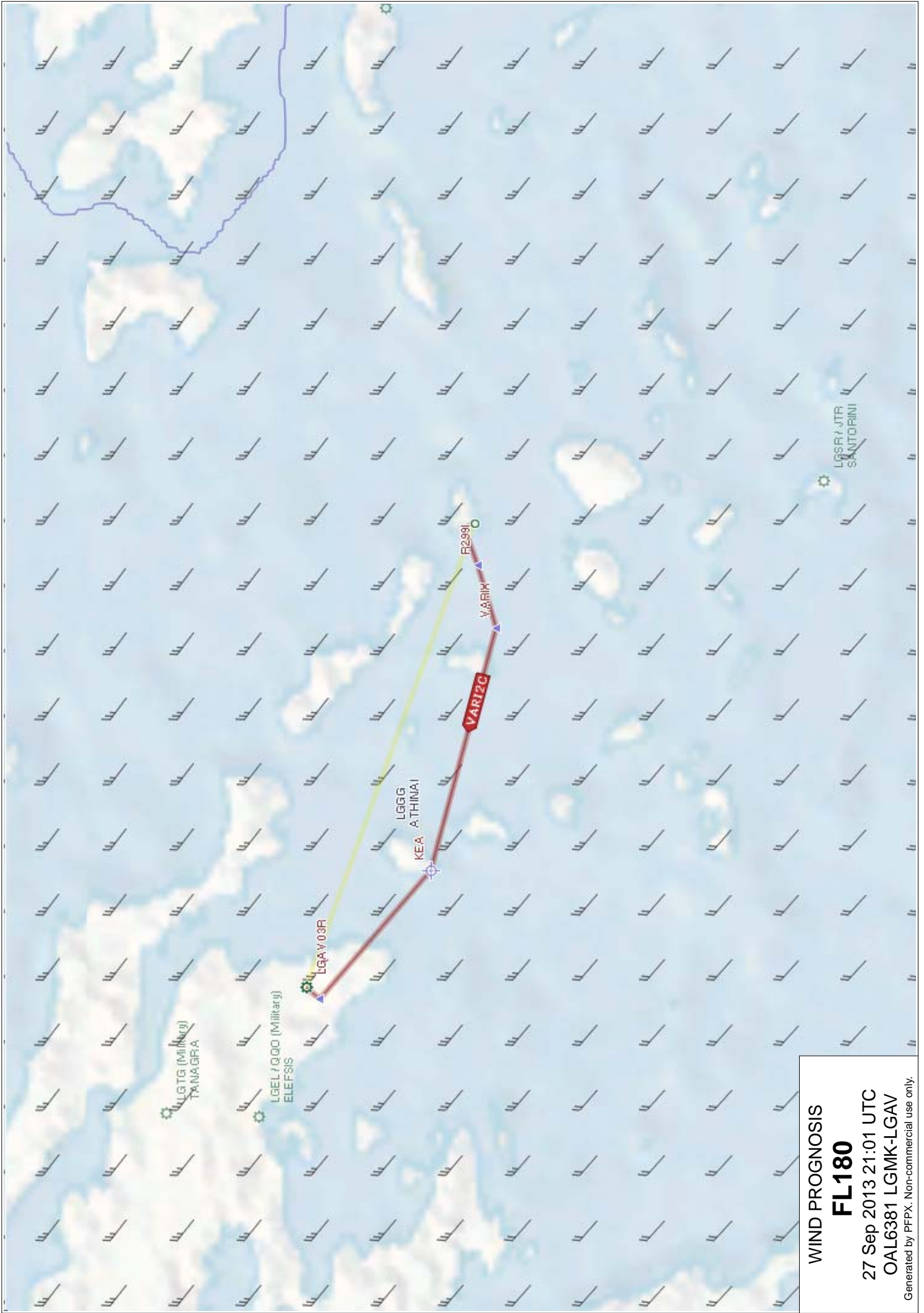
WIND PROGNOSIS

FL160

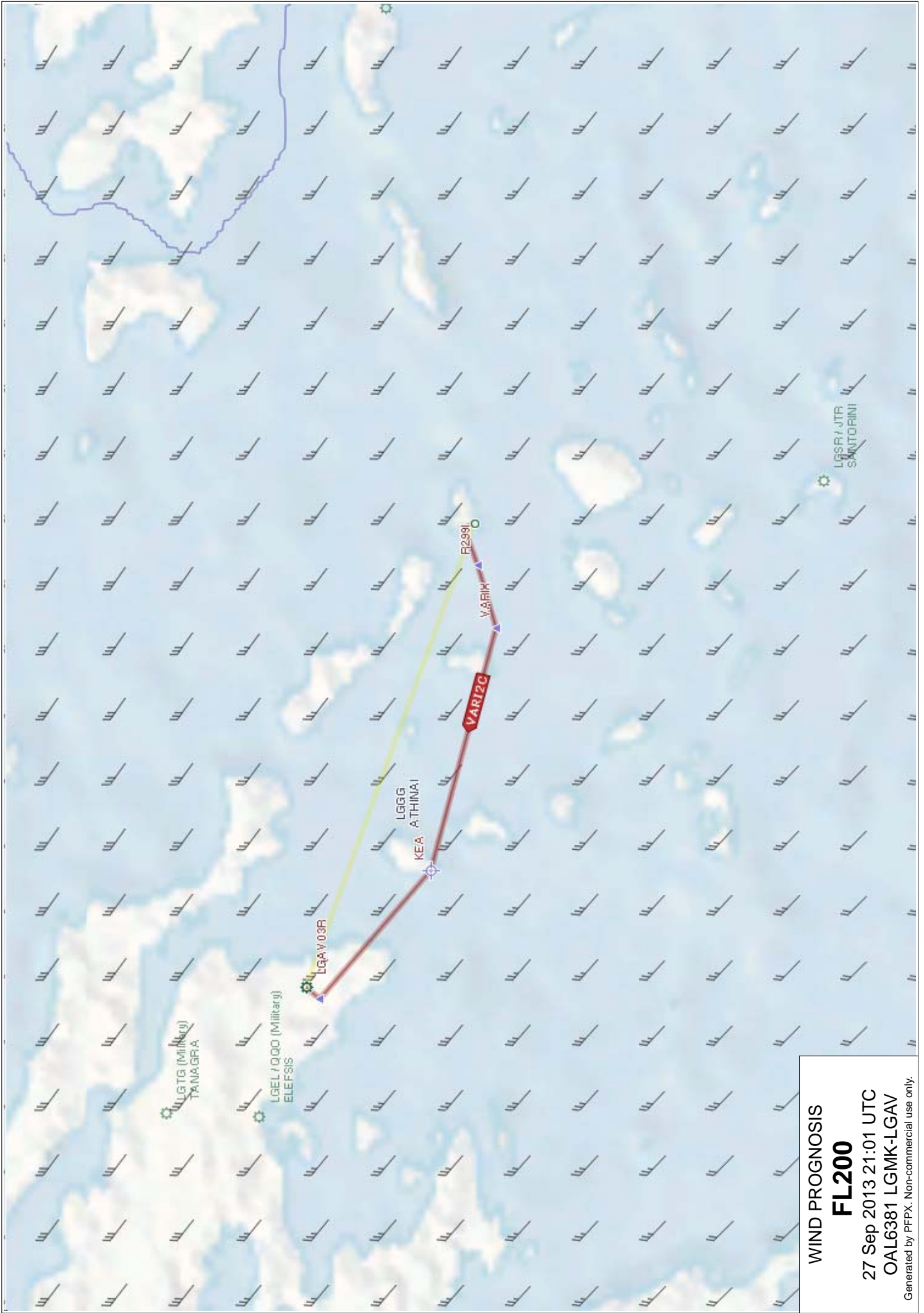
27 Sep 2013 21:01 UTC

OAL6381 LGMK-LGAV

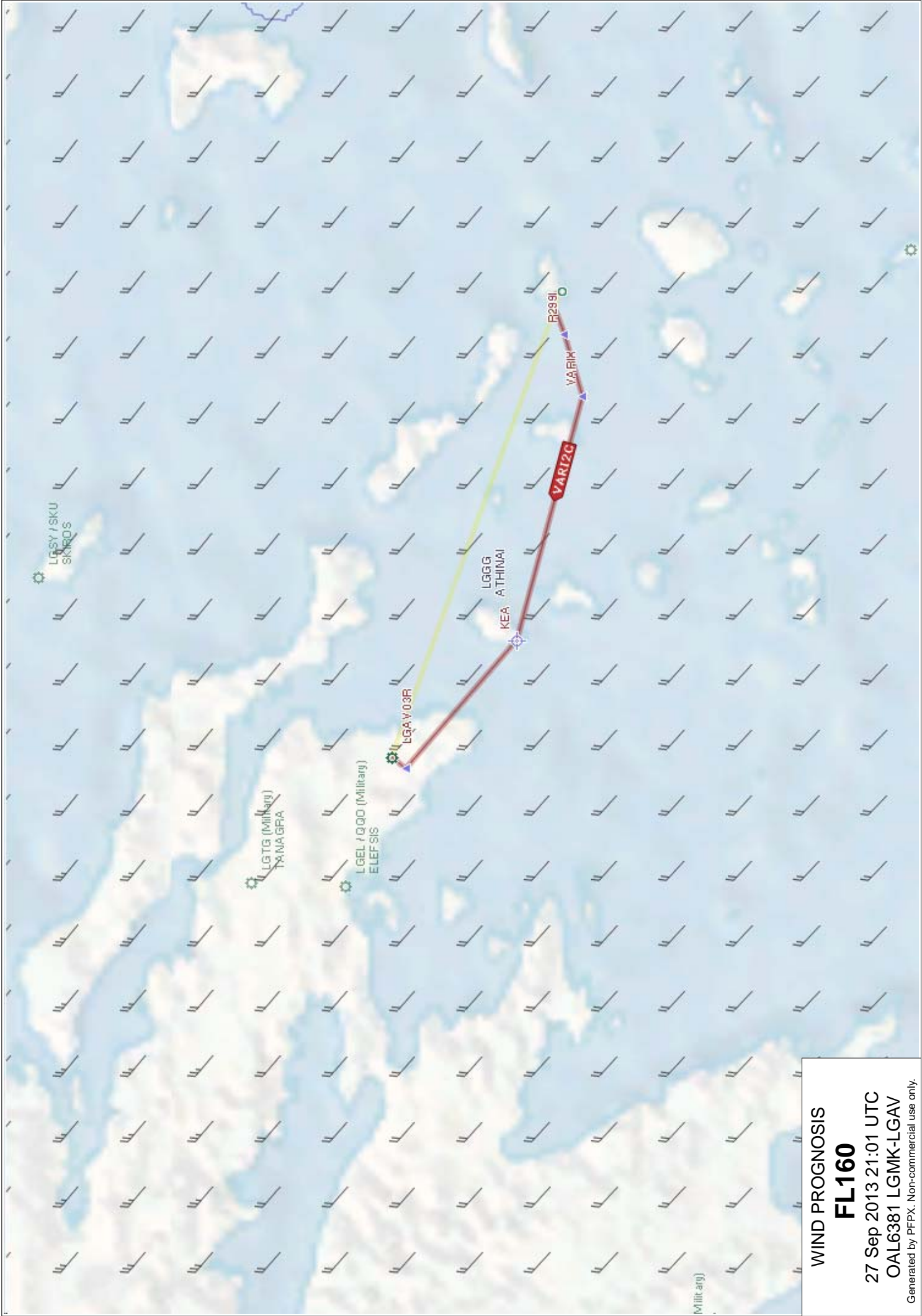
Generated by PEPX. Non-commercial use only.



WIND PROGNOSIS
FL180
27 Sep 2013 21:01 UTC
OAL6381 LGMK-LGAV
Generated by PEPX. Non-commercial use only.



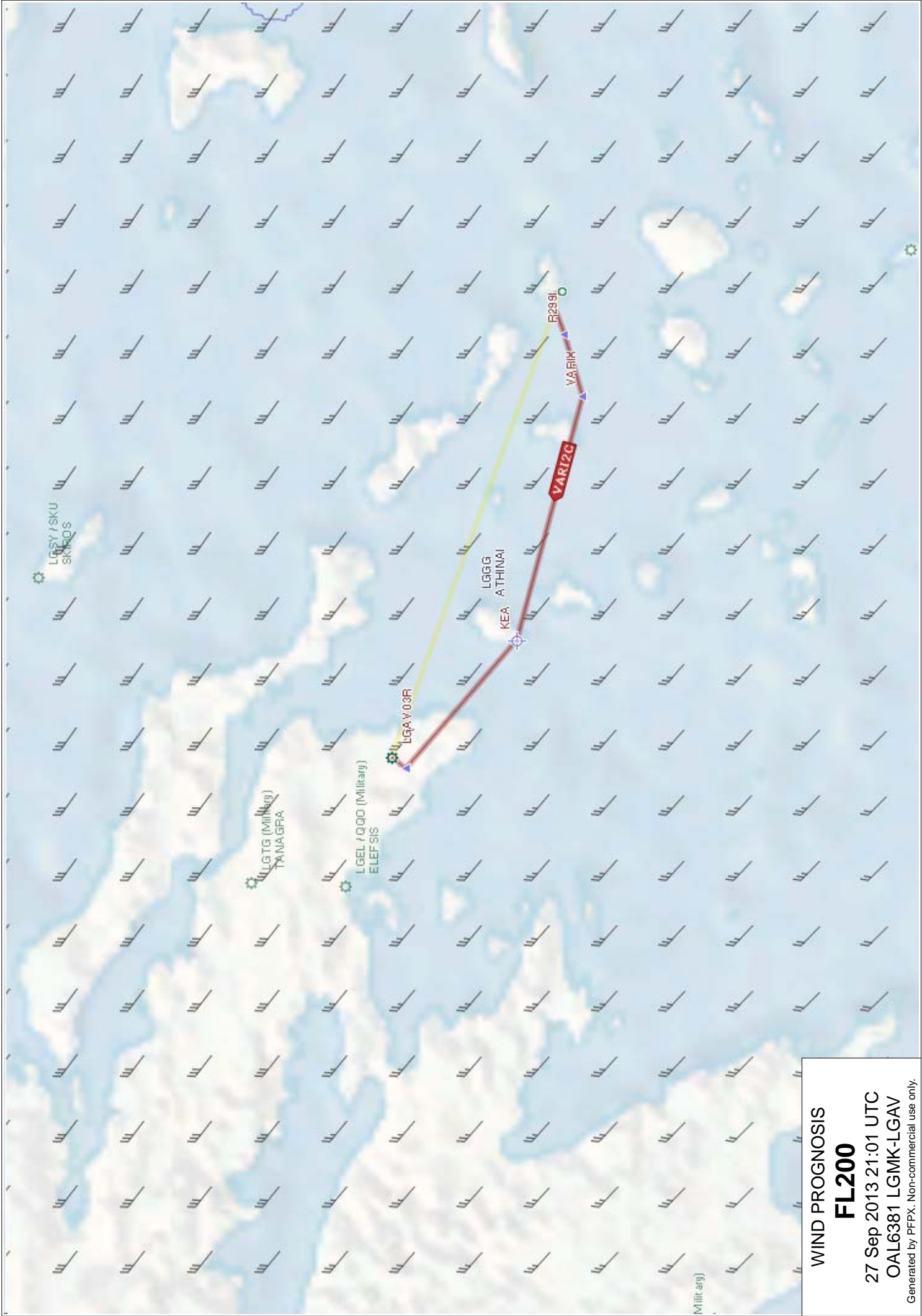
WIND PROGNOSIS
FL200
27 Sep 2013 21:01 UTC
OAL6381 LGMK-LGAV
Generated by PEPX. Non-commercial use only.



WIND PROGNOSIS
FL160
27 Sep 2013 21:01 UTC
OAL6381 LGMK-LGAV
Generated by PFPX. Non-commercial use only.



WIND PROGNOSIS
FL180
27 Sep 2013 21:01 UTC
OAL6381 LGMK-LGAV
Generated by PFPX. Non-commercial use only.



WIND PROGNOSIS
FL200
27 Sep 2013 21:01 UTC
OAL6381 LGMK-LGAV
Generated by PFPX. Non-commercial use only.

PGDE14 EGRR 270000

ISSUED BY WAFC LONDON
 PROVIDED BY WAFC LONDON
 FIXED TIME PROGNOSTIC CHART
 ICAO AREA EURO SIGWX
 FL 100-450
 VALID 00 UTC 28 SEP 2013

CB IMPLIES TS, GR
 MOD OR SEV TURB AND ICE

UNITS USED: HEIGHTS IN FLIGHT LEVELS
 CHECK SIGMET, ADVISORIES FOR
 TC AND VA, AND ASHTAM AND
 NOTAM FOR VA

CAT AREAS

1 380
 280

2 410
 310

